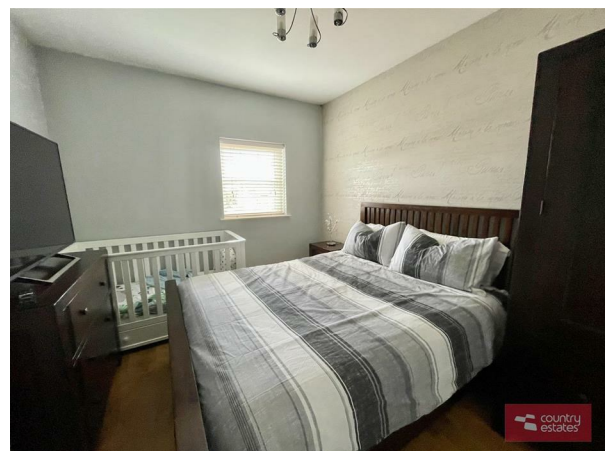


16 Blackrock Lane, Newtownabbey, BT36 4AB



- Modern Townhouse
- 3 Bedrooms
- 1+ Receptions
- Open Plan Living / Kitchen / Dining Layout
- Luxury Shaker Style Fitted Kitchen
- Highly Regarded Established Development
- PVC Double Glazed Windows / Gas Central Heating
- Deluxe Family Bathroom
- Utility Room / Furnished Cloackroom
- Excellent First Time Buy

PRICE Offers Over £164,950

Positioned within the award winning Blackrock Development, situated on a private site. This 3 bedroom townhouse enjoys a well planned living layout incorporating superb open plan living / kitchen / dining layout, deluxe en-suite and deluxe family bathroom. Will ideally suit the first time buyer and early viewing is highly recommended.

>Sales >New Homes >Commercial >Rentals >Mortgages

Antrim
12 Church Street
BT41 4BA
Tel: (028) 9446 6777

Ballyclare
51 Main Street
BT39 9AA
Tel: (028) 9334 0726

Glengormley
9A Ballyclare Road
BT36 5EU
Tel: (028) 9083 0803

ACCOMMODATION

GROUND FLOOR

Front door into:

ENTRANCE HALL

Tiled floor

LOUNGE 13'9" x 12'4"

Attractive modern cast iron fireplace with gas fire inset and cream coloured surround. Grey coloured laminate flooring

OPEN PLAN LIVING/KITCHEN/DINING ASPECT 19'3"x18'5"

At max. Incorporating luxury shaker kitchen equipped with a range of high and low level fitted units with contrasting work surfaces. Integrated oven with four ring gas hob, overhead extractor fan housed in stainless steel canopy. Integrated fridge / freezer and dishwasher. Part tiled walls in metro brick, tiled floor extending through into living / dining aspect. Twin PVC double glazed doors into courtyard style gardens

UTILITY ROOM 8'3" x 6'5"

Fitted with matching range of high and low level shaker style units. Single drainer stainless steel sink unit and plumbed for washing machine

FURNISHED CLOAKROOM 6'5" x 2'6"

Button flush w.c, pedestal wash hand basin with patterned tiled splash back

FIRST FLOOR

BEDROOM 1 12'8" x 9'11"

DELUXE EN-SUITE 8'6" x 2'11"

Comprising button flush w.c, semi pedestal wash hand basin with mono bloc tap and large shower enclosure. Tiled floor and PVC panelled tile effect walls

BEDROOM 2 11'11" x 8'10"

Laminate floor

BEDROOM 3 7'4" x 6'10"

Laminate floor

DELUXE FAMILY BATHROOM

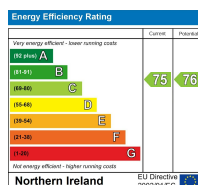
Comprising panelled bath with fixed shower screen, button flush w.c and semi pedestal wash hand basin with mono bloc tap. Tiled floor and part tiled walls

OUTSIDE

Neat walled garden to front with Victorian style ornamental railings, fully paved. Private enclosed courtyard style garden to rear, hard landscaped for easy maintenance and screened by perimeter fence.

IMPORTANT NOTE TO ALL PURCHASERS:

We have not tested any of the systems or appliances at this property.



Country Estates (N.I.) Ltd. for themselves and the Vendors of this property whose agents are, give notice that:

These particulars do not constitute any part of an offer or contract

All statements contained in these particulars as to this property are made without responsibility on the part of Country Estates (N.I.) Ltd. or the vendor

None of the statements contained in these particulars as to this property are to be relied on as statements or representations of fact

Any intending purchaser must satisfy himself or otherwise as to the correctness of the statement contained in these particulars

The vendor does not make or give, and neither Country Estates (N.I.) Ltd. nor any person in their employment, has any authority to make or give representation or warranty whatever in relation to this property.