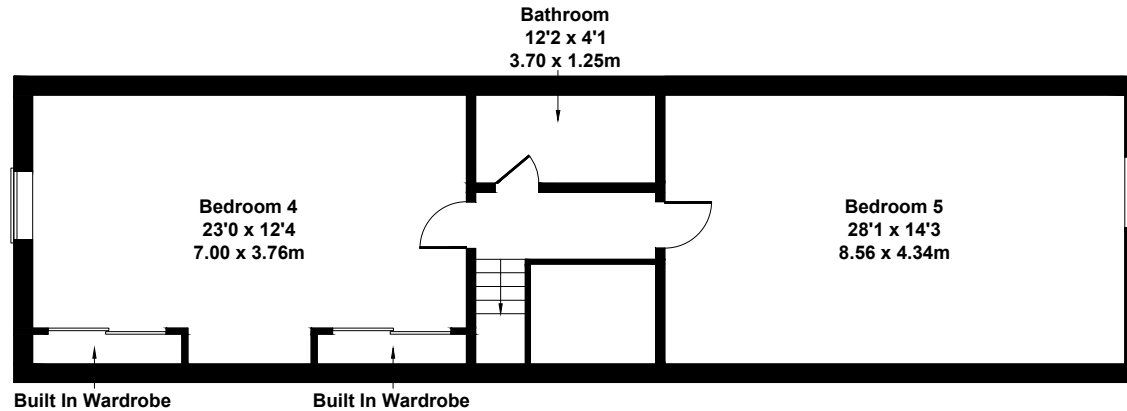
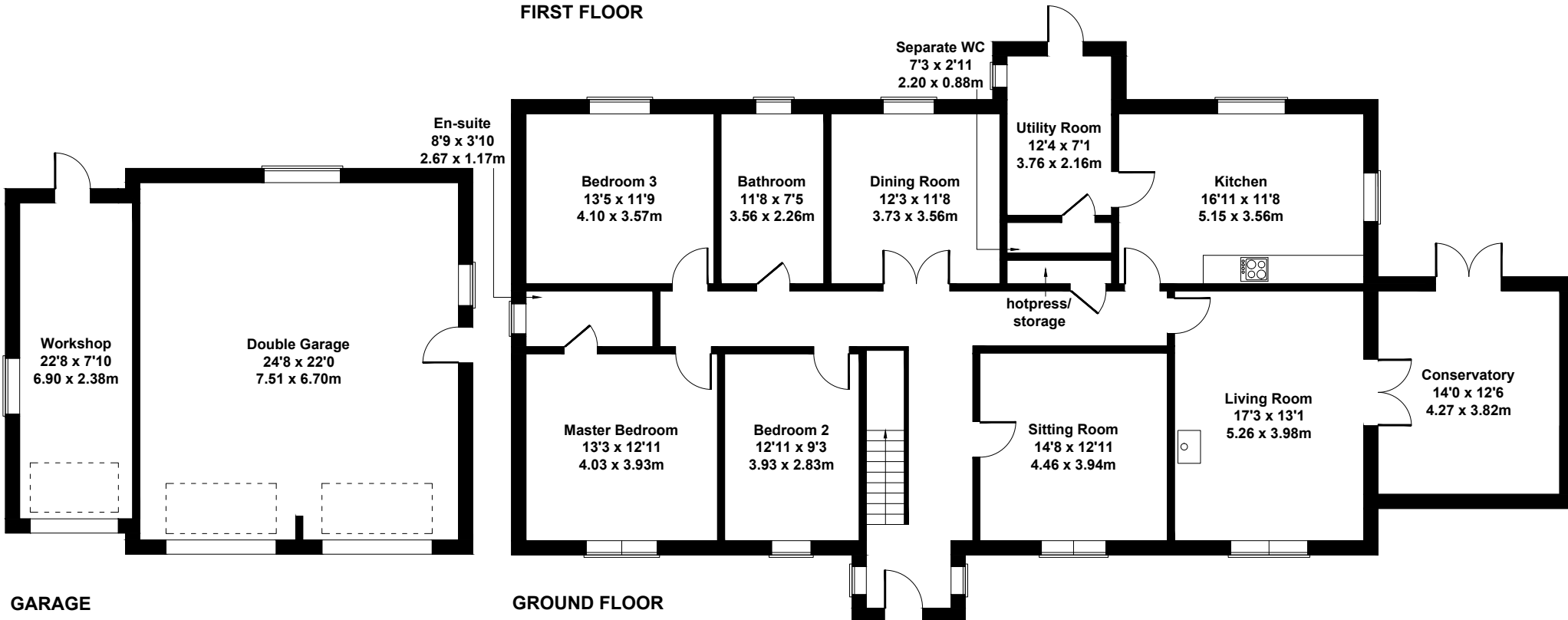


Tall Trees, 1 Colebrooke Park Road, Brookeborough, BT94 4BE

Approximate Gross Internal Area
3488 sq ft - 324 sq m



FIRST FLOOR



GARAGE

GROUND FLOOR

Not to Scale, all measurements, walls, windows, fittings and appliance's locations, are approximate only.
For Illustrative Purposes Only.