

Dougan

RESIDENTIAL

Telephone 028 9030 8855
douganproperty.com



8 Redwood Dale

Dunmurry, BT17 9RL

Asking Price £175,000

KEY FEATURES

- End Townhouse Located In A Well Established And Popular Development
- Belfast City Centre And Lisburn Easily Accessible By Bus, Car Or Rail
- Living Room With Feature Gas Fire
- Kitchen Open To Dining /Family Area
- Four Generous Bedrooms
- Master Bedroom With Ensuite Shower Room
- First Floor Bathroom
- Downstairs W.C
- Private Enclosed Rear Garden Laid In Loose Stone
- Driveway Parking To Front
- Early Viewing Advised



SUMMARY

End townhouse located in the ever popular Redwoods development in Dunmurry. The property is close to many local amenities and Belfast city centre and Lisburn are easily accessible by bus car or rail.

The accommodation briefly comprises of a bright and spacious living room with feature gas fire, a kitchen with excellent dining / family area and a downstairs w.c on the ground floor. Three bedrooms (master with ensuite) and a family bathroom are to the first floor. Bedroom four is on the second floor.

The property further benefits from a low maintenance rear garden laid in loose stone and driveway parking to the front.

Early viewing is advised to appreciate the potential this fine home has to offer.

ACCOMMODATION:

Ground Floor

ENTRANCE HALL: Laminate wooden floor

LIVING ROOM: 17' 10" x 10' 8" (5.43m x 3.26m)

Feature gas fireplace with wooden mantle and granite hearth, laminate wooden floor

KITCHEN WITH DINING / FAMILY AREA: 17' 9" x 10' 9" (5.40m x 3.27m) Range of high and low level units with chrome handles, formica work surfaces, integrated oven and four ring gas hob, chrome extractor fan, integrated fridge freezer, plumbed for washing machine, stainless steel sink unit, storage, tiled floor, partly tiled walls

W.C: Low flush w.c, wash hand basin with chrome taps

First Floor

BATHROOM: Panel bath, pedestal wash hand basin with chrome taps, low flush w.c

BEDROOM (1): 15' 1" x 7' 6" (4.59m x 2.29m)

Laminate wooden floor

ENSUITE SHOWER ROOM: Shower cubicle, low flush w.c, wash hand basin with chrome taps

BEDROOM (2): 10' 8" x 10' 1" (3.24m x 3.08m)

Laminate wooden floor

BEDROOM (3): 6' 11" x 6' 9" (2.10m x 2.05m)

Laminate wooden floor

Second Floor

BEDROOM (4): 14' 1" x 12' 7" (4.29m x 3.83m)

Storage into the eaves, spot lighting

Outside

Enclosed rear garden laid in loose stone.

Driveway parking to front

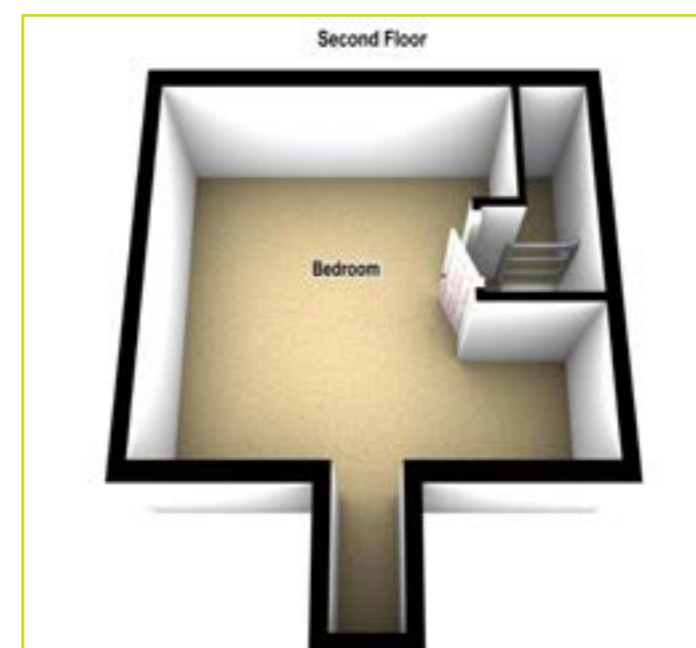
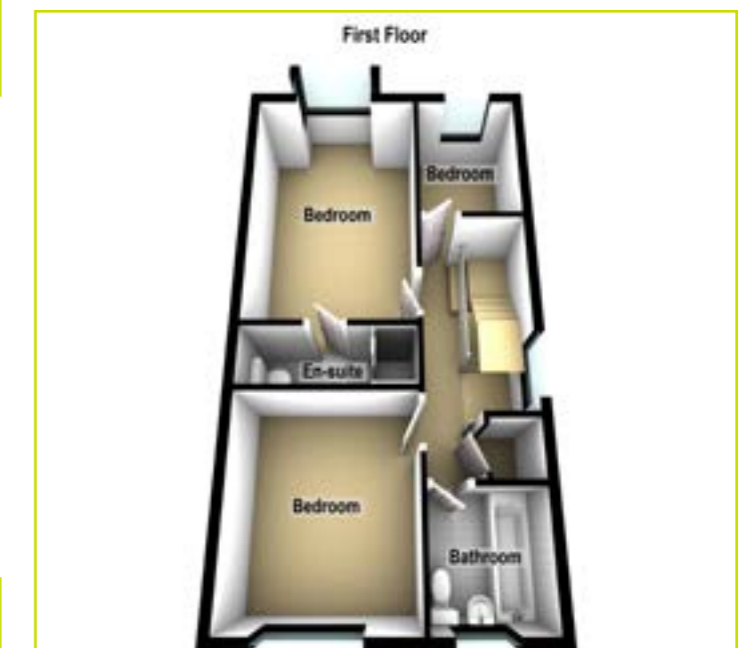




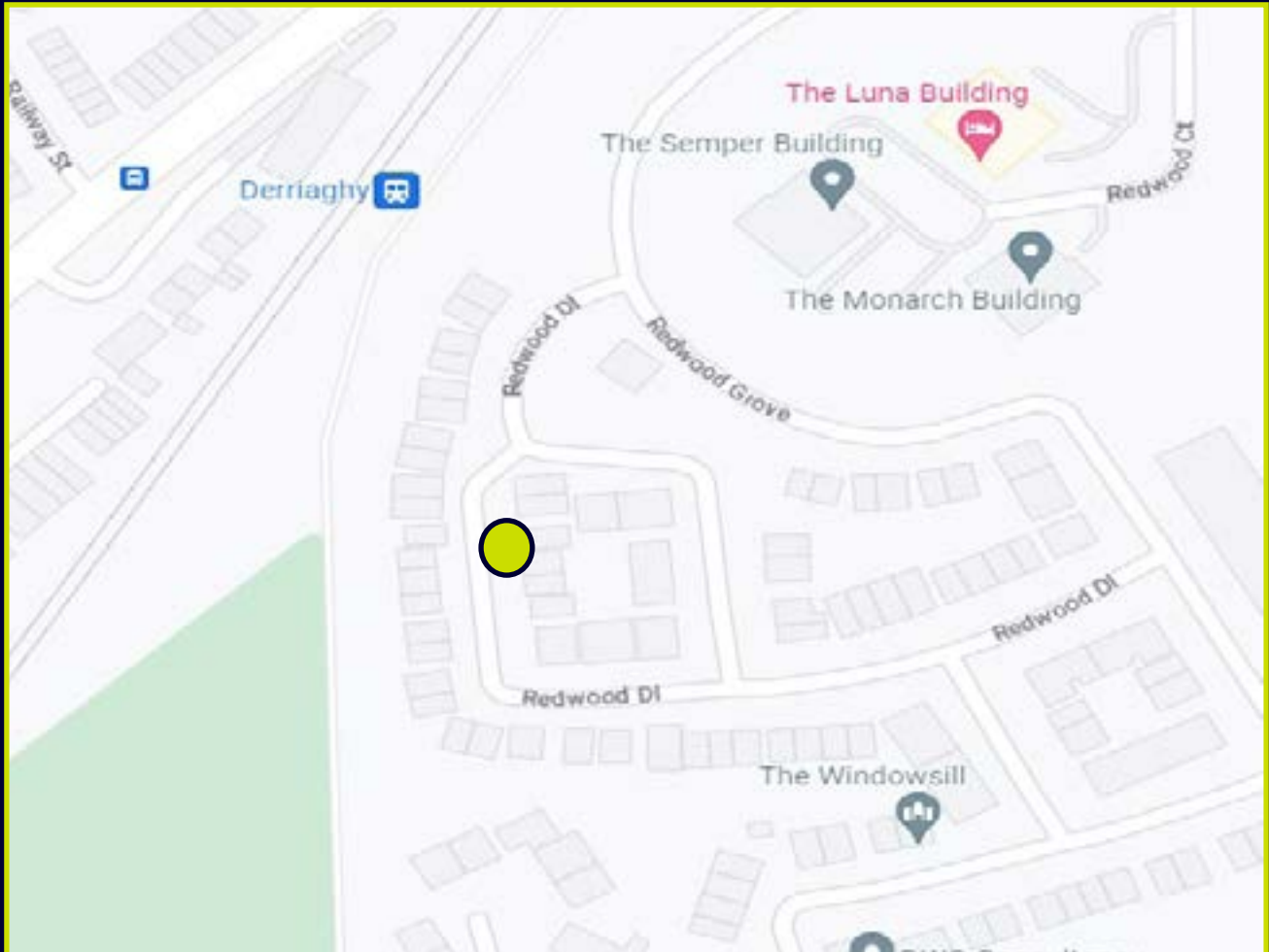




FLOOR PLANS (NOT TO SCALE)



LOCATION MAP



EPC



Dougan
RESIDENTIAL

6 Orpen Shopping Centre Upper Lisburn Road
Belfast BT10 0BG
Telephone 028 9030 8855
Email info@douganproperty.com
Web www.douganproperty.com



Dougan Residential for themselves and for the Vendors or Lessors of the property whose agents they are give notice that; i) these particulars are given without responsibility of Dougan Residential or the Vendors or Lessors as a general outline only, for the guidance of prospective purchasers or tenants, and do not constitute the whole or any part of an offer or contract; ii) Dougan Residential cannot guarantee the accuracy of any description, dimensions, references to condition, necessary permissions for use and occupation and other details contained herein and any prospective purchasers or tenants should not rely on them as statements or representations of fact but must satisfy themselves by inspection or otherwise as to the accuracy of each of them; iii) no employee of Dougan Residential has any authority to make or give any representation or warranty or enter into any contract whatsoever in relation to the property; iv) VAT may be payable on the purchase price and/or rent, all figures are quoted exclusive of VAT, intending purchasers or lessees must satisfy themselves as to the applicable VAT position, if necessary by taking appropriate professional advice; v) Dougan Residential will not be liable, in negligence or otherwise, for any loss arising from the use of these particulars.