



17 Whitepark Drive Ballycastle, BT54 6WG



Homepage are delighted to present this immaculate five bedroom, three reception, detached family home, conveniently located in the sought after Whitepark area of Ballycastle, voted 'Best Place to Live' by the Sunday Times.

Extending to approx. 2,800 sq ft, the property is presented in very high standard throughout benefiting from 3 reception rooms, modern kitchen design with integrated appliances, dining area, 4 large bedrooms (3 with ensuite), family bathroom and a large downstairs bedroom / office.

Offering excellent living accommodation and outdoor space this property is sure to appeal to a wide range of buyers.

Asking price £375,000

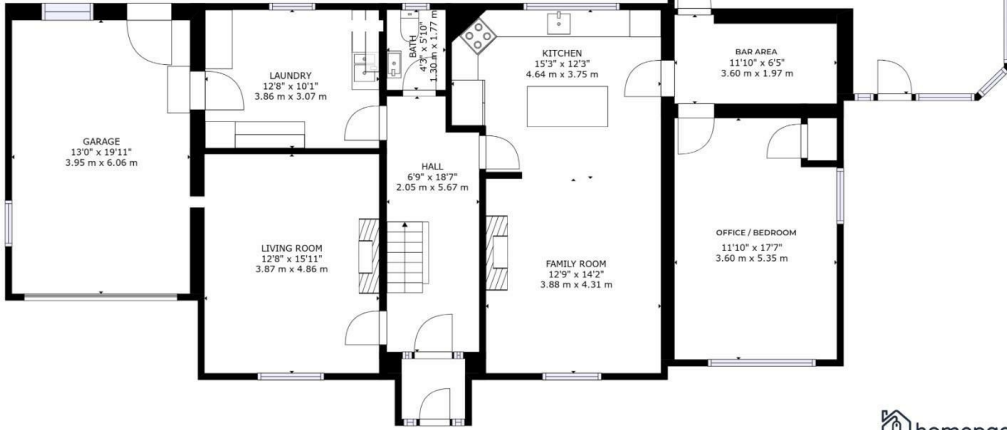
Viewing

Please contact our Homepage NI Office on 08000465102 if you wish to arrange a viewing appointment for this property or require further information.

- ***** VIEW THE 3D TOUR *****
- **5 BEDROOM DETACHED FAMILY HOME**
- **2,800 SQ FT**
- **3 RECEPTION ROOMS**
- **LARGE 265 SQ FT SUN ROOM**
- **DOWNSTAIRS BEDROOM**
- **3 ENSUITE BEDROOMS**
- **PERFECT CONDITION THROUGHOUT**
- **SHOWCASE PATIO AREA**
- **SOUGHT AFTER LOCATION**

17 Whitepark Drive
BALLYCASTLE

Ground Floor



TOTAL FLOOR AREA - circa 2,800 sq ft

This architectural perspective is for illustrative purposes only. The floor plan shown may vary from the actual finish on site. Plans are not to scale and measurements are approximate.



Energy Efficiency Rating

| | Current | Potential |
|---|---------|-----------|
| Very energy efficient - lower running costs | | |
| (92 plus) A | | |
| (81-91) B | | |
| (69-80) C | | |
| (55-68) D | | |
| (39-54) E | | |
| (21-38) F | | |
| (1-20) G | | |
| Not energy efficient - higher running costs | | |

Northern Ireland EU Directive 2002/91/EC
Environmental Impact (CO₂) Rating

| | Current | Potential |
|---|---------|-----------|
| Very environmentally friendly - lower CO ₂ emissions | | |
| (92 plus) A | | |
| (81-91) B | | |
| (69-80) C | | |
| (55-68) D | | |
| (39-54) E | | |
| (21-38) F | | |
| (1-20) G | | |
| Not environmentally friendly - higher CO ₂ emissions | | |

Northern Ireland EU Directive 2002/91/EC



These particulars, whilst believed to be accurate are set out as a general outline only for guidance and do not constitute any part of an offer or contract. Intending purchasers should not rely on them as statements of representation of fact, but must satisfy themselves by inspection or otherwise as to their accuracy. No person in this firm's employment has the authority to make or give any representation or warranty in respect of the property.