



Bond
Oxborough
Phillips

Changing Lifestyles

The Spruce

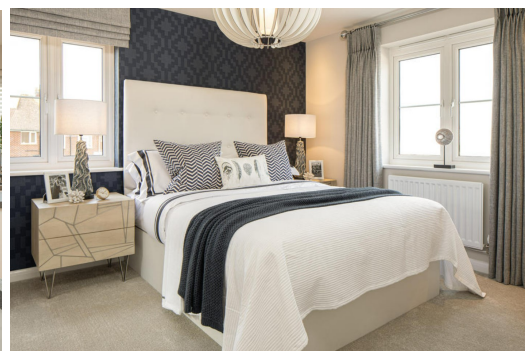
The Tors

Tavistock

PL19 8FY



Prices From £379,995



Changing Lifestyles

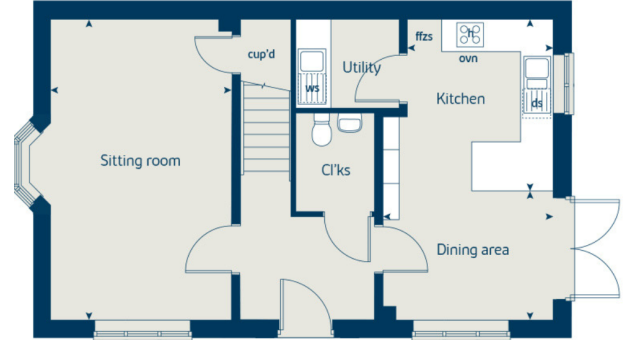
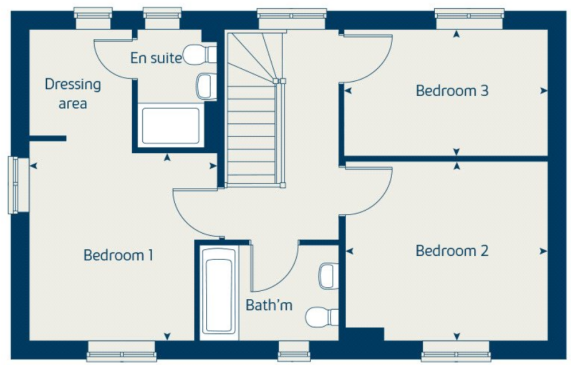
01822 600700

The Property:

This eye-catching double-fronted home features stunning attributes that are sure to amaze. Boasting French doors, a living area, and a combined kitchen/dining area, this space provides ample room for entertaining.

A tranquil utility room offers an extra layer of peace for cooking and dining. Upstairs, three bedrooms, including a primary suite with an en-suite and personal dressing room, surround the full-sized bathroom.

Finally, the exterior contains an enclosed garden, in addition to a garage with convenient parking.



Ground floor	metres	feet / inches
Kitchen	3.23 x 2.69	10' 7" x 8' 9"
Dining area	3.14 x 2.30	10' 3" x 7' 6"
Sitting room	5.53 x 3.32	18' 1" x 10' 10"

First floor	metres	feet / inches
Bedroom 1	3.39 x 3.33	11' 1" x 10' 11"
Bedroom 2	3.61 x 3.18	11' 10" x 10' 5"
Bedroom 3	3.61 x 2.25	11' 10" x 7' 4"

Plot 209 Detached
Due for completion Aug/ Sept 2023

Please note these particulars and photos are for illustrative purposes only.

- 2 bedroom home
- 3 bedroom home
- 5 bedroom home
- Affordable housing
- The Buckthorn
- The Poplar
- The Cypress
- The Spruce
- The Lime
- The Yew
- v visitor space
- pos public open space
- neap neighbourhood equipped area of play



Location:

Tavistock is a thriving stannary market town in West Devon, nestled on the western edge of Dartmoor National Park. Tavistock is an ancient town, rich in history dating back to the 10th century and famed for being the birthplace of Sir Francis Drake. Largely the 19th-century town centre is focused around Bedford Square which is a short stroll from this property.

The town offers a superb range of shopping, boasting the famous Pannier Market and a wide range of local and national shops. Also there are public houses, cafes, restaurants, social clubs, riverside park, leisure centre, theatre, doctors surgery, dentists and Tavistock Hospital.

There are excellent educational facilities including primary and secondary schools in the state and private sector. The town has superb recreation and sporting facilities including; Tennis club, bowls club, golf club, cricket clubs, football club and athletics track.

We have the facility to refer purchasers and vendors to conveyancing, mortgage advisors and Surveyors. It is your decision if you choose to deal with any of these companies however should you choose to use them we would receive a referral fee from them for recommending you. We will receive a referral fee between £50 - £300 depending on the company & individual circumstances. We have carefully selected these associates for the quality of their work and customer service levels.

Consumer Protection Regulations: We have not tested any apparatus, equipment, fixtures and fittings or services and so cannot verify that they are in working order or fit for the purpose. References to the Tenure of a Property are based on information supplied by the seller. We have not had sight of the Title Documents. A buyer is advised to obtain verification from their solicitor or surveyor. Floorplans shown are for guidance only and should not be relied upon. Items shown in photographs are NOT included unless specifically mentioned within these details. They may however be able by separate negotiation. You are advised to check the availability of this property before travelling any distance to view. Particulars are produced in good faith to the best of our knowledge and are set out as a general guide only.