



**UPTON
HALL**

ANTRIM ROAD
TEMPLEPATRICK
BT39

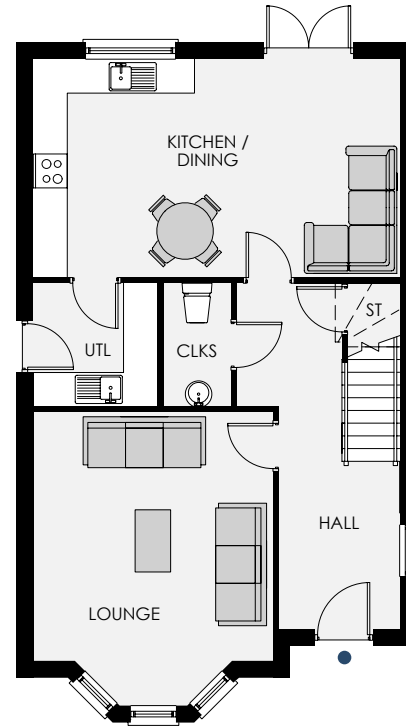


THE
BENTHAM

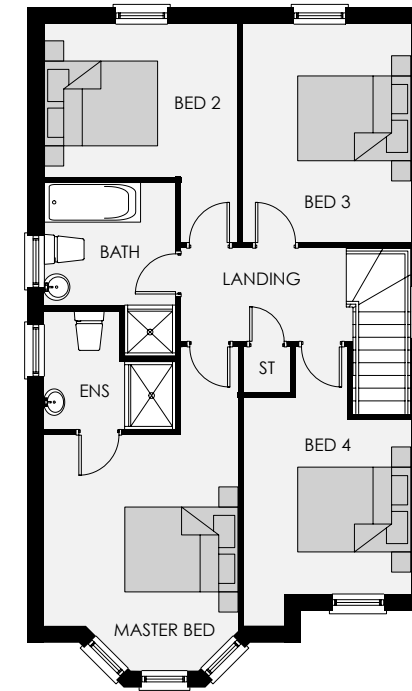
CGI image is for visual purposes only - Please refer to landscaping plan with estate agent with regards to individual plots.

THE BENTHAM

Total Floor Area
1,489 sq ft approx.



GROUND FLOOR



FIRST FLOOR

TYPE B

UPTON HALL
ANTRIM ROAD
TEMPLEPATRICK
BT39

simonBRIEN
RESIDENTIAL

SOUTH BELFAST
Telephone 028 9066 8888
www.simonbrien.com

Reeds Rains
- Since 1868 -

GLENGORMLEY
Telephone 028 9084 3427
www.reedsrains.co.uk

GROUND FLOOR

Entrance Hall	
Lounge Plus Bay	14'5" x 13'10"
Kitchen / Family / Dining into Bay	21'3" x 12'8"
Utility	7'2" x 7'1"
Cloakroom	7'1" x 3'11"

FIRST FLOOR

Master Bed Plus Bay	11'2" x 11'0"
Ensuite Max	7'7" x 6'10"
Bedroom 2 Max	12'8" x 11'2"
Bedroom 3	12'8" x 9'8"
Bedroom 4 Min	10'1" x 9'8"
Bathroom	7'7" x 7'1"



In compliance with Consumer Protection from Unfair Trading and Business Protection from Misleading Marketing Regulations, please note that any visual or pictorial representations as featured in this brochure such as 3D computer generated images are purely intended as a guide for illustrative, concept purposes only and often may be subject to change. Any floor plans and site layouts used are not to scale and all dimensions are approximate, taken from widest points and subject to change.