

# MARC FEGAN

BESPOKE ESTATE AGENT

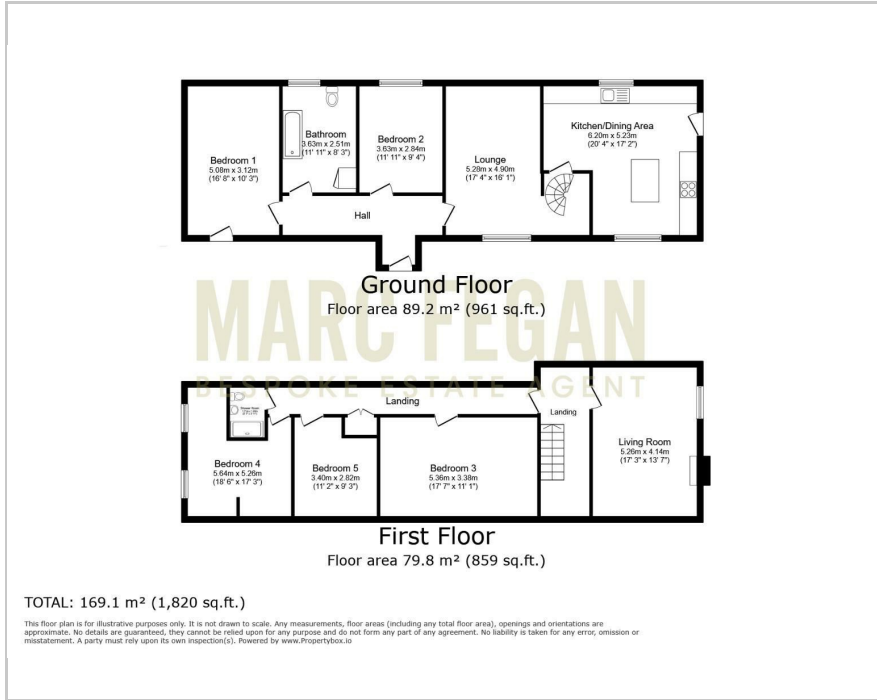


12 Yewtree Hill Road, Lisburn, BT67 0JQ  
Offers over £399,950

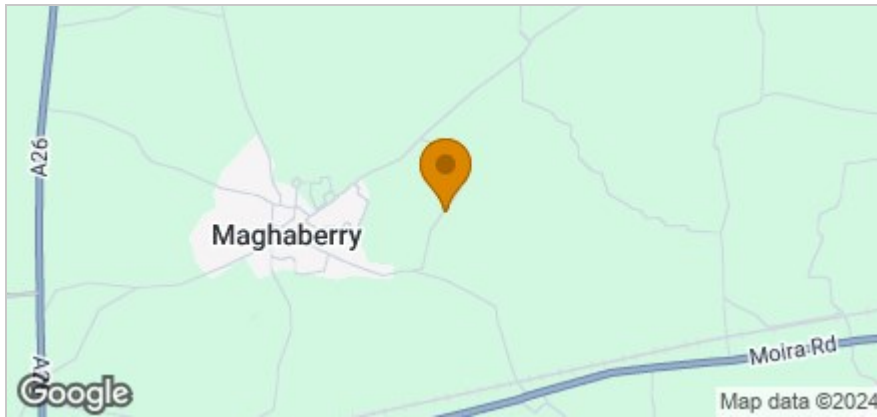
**MARC FEGAN**  
BESPOKE ESTATE AGENT

 4  2  3  E

## Floor Plan



## Area Map



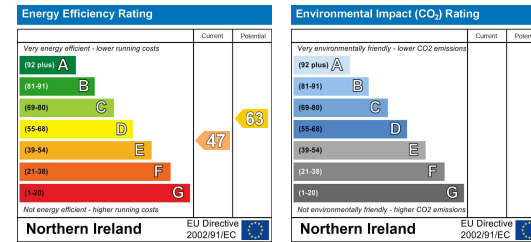
## Accommodation

- Charming Detached Home on Spacious Site of Approx 0.75 Acres
- Spacious & Well Presented Throughout
- Detached Double Garage With Floored Loft Ideal for Conversion to Games Room
- Picturesque Gardens With Extensive Lawns, Shrubs & Patio Areas
- Rolling Countryside Views
- Flexible Accommodation - Can Be Used As A 4,5 or 6 Bedroom Depending On Buyer Requirements
- Bursting With Character - Traditional Feel With Quality Finish
- Quiet & Peaceful Surroundings
- Convenient Location Within Easy Reach of Maghaberry, Moira, M1 & Lisburn
- Oil Fired Central Heating & Double Glazed Windows

## Viewing

Please contact our Marc Fegan Bespoke Estate Agent Office on 02838894608 if you wish to arrange a viewing appointment for this property or require further information.

## Energy Efficiency Graph



These particulars, whilst believed to be accurate are set out as a general outline only for guidance and do not constitute any part of an offer or contract. Intending purchasers should not rely on them as statements of representation of fact, but must satisfy themselves by inspection or otherwise as to their accuracy. No person in this firm's employment has the authority to make or give any representation or warranty in respect of the property.