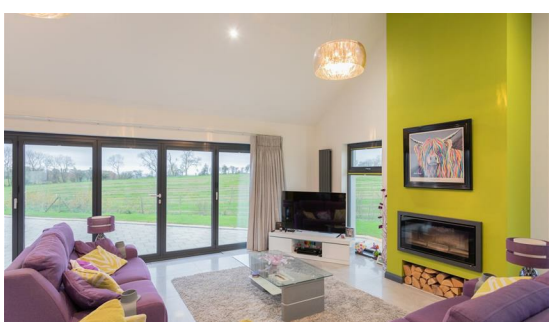


6b Eskylane Road, Antrim, County Antrim, BT41 2LL



PRICE Offers Around £425,000

We are delighted to offer for sale this exceptional Architecturally designed detached bungalow constructed for the current owners and occupying a large rural site with excellent sun orientation and outstanding views over surrounding countryside. Accessed via a shared tarmac laneway the property is approached via feature electric gates to a generous tarmac driveway with parking for a substantial number of cars. In addition to the integral garage the property also boast a detached insulated modular garage with lean-to affording the opportunity to convert the integral garage into a fourth bedroom (subject to necessary approvals).

Immaculately presented both inside and out, the central hub of the home is the large open plan kitchen, living and dining room complete with vaulted ceiling and triple glazed bi-folding doors making the best of the superb views and open onto the large south facing patio. The luxury graphite coloured high gloss kitchen units are complimented by "Silstone" worktops and centre island together with integrated double oven, hob, fridge freezer and dishwasher. The concealed drinks cabinet, retractable counter top extractor and "Quooker" boiling water tap help to set this kitchen apart from others in a way that is replicated throughout the property with the owners keen eye for detail .

With too many features to list, this property can only be properly appreciated on full internal inspection.

Early viewing strongly recommended.

>Sales >New Homes >Commercial >Rentals >Mortgages

Antrim
12 Church Street
BT41 4BA
Tel: (028) 9446 6777

Ballyclare
51 Main Street
BT39 9AA
Tel: (028) 9334 0726

Glengormley
9A Ballyclare Road
BT36 5EU
Tel: (028) 9083 0803



FEATURES

- Feature entrance door and glazed overlight to spacious entrance hall with fully tiled floor
- Lounge with designer free standing cast iron corner stove with exposed flue
- Large open plan kitchen with informal living and dining areas / Vaulted ceiling / Five door bi-folding doors to rear patio / Large bay window area for informal dining / Feature glass fronted solid fuel fire with wood storage below
- Full range of luxury high gloss graphite coloured high and low level units with integrated double oven, hob, dishwasher, fridge and freezer / "Silestone" worktops and "Quooker" boiling water mixer tap / Concealed bar cupboard with mirrored back
- Utility room with full range of white high gloss units to include pull out laundry basket
- Three well proportioned double bedrooms / Master with luxury ensuite shower room and walk-in dressing room
- Luxury bathroom suite with free-standing contemporary style slipper bath and shower cubicle
- "Weber" external thermal insulation / Graphite coloured PVC triple glazed windows / Oil-fired central heating with additional roof mounted solar tubes / Electric gates, CCTV and security alarm / PVC fascia and soffits / Seamless aluminium guttering / "Bea
- Large site with substantial tarmaced area to front and rear / Integral garage (may be suitable for conversion to bedroom four) / Generous gardens in neat lawn / Substantial paved patio area
- Superb private site with stunning views over surrounding countryside

ACCOMMODATION

Feature composite door with triple glazed and part frosted inset, sidelight and overlight to:

SPACIOUS ENTRANCE HALL

Two double radiators. Low voltage down lights.

LOUNGE

15'4 x 13'2 (4.67m x 4.01m)

Offset corner feature glass fronted free standing cast iron stove with exposed flue and circular slate hearth. Low voltage down lights. Double radiator.

KITCHEN WITH INFORMAL LIVING AND DINING

27'6 x 25'8 (8.38m x 7.82m)

(max) into dining bay. Full range of high gloss, graphite coloured high and low level units to include integrated "Neff" double oven and separate grill. Feature built-in drinks cupboard with mirrored back and glass shelving. Concealed "toaster" cupboard with retractable shelving and inset lighting. Centre island with "Silestone" work top and 4 seater over-hanging breakfast bar. "Neff" inset halogen hob and "Smeg" "rise and fall" extractor unit. Inlaid one and a quarter bowl stainless steel sink unit and "Quooker" mixer taps with "boiled water" facility. Integrated dish washer, fridge and freezer. Polished porcelain fully tiled floor. Vaulted ceiling with low voltage down lights. Feature raised glass fronted multi solid fuel fire with wood storage below. Five door triple glazed bi-folding door system to rear patio area. Dual aspect windows to floor level. Secondary floor heating. Four designer upright radiators.

REAR HALL

7'10 x 6'7 (2.39m x 2.01m)

Polished porcelain fully tiled floor. Single radiator. Composite stable door to rear. Access to integrated garage and utility.

UTILITY

11'8 x 7'11 (3.56m x 2.41m)

Full range of white high gloss high and low level units with contrasting work surfaces. Single drainers stainless steel sink unit and mixer taps. Tiled splash backs. Plumbed for washing machine and space for dryer. Pull out laundry basket. Polished porcelain fully tiled floor.

BEDROOM 1

13'5 x 11' (4.09m x 3.35m)

PVC triple glazed French doors with opening top lights to rear patio. Two upright designer radiators with inset mirrors. High level TV point . Access to loft. High gloss black mirrored sliding doors to;

WALK-IN DRESSING ROOM

12'9 x 6'11 (3.89m x 2.11m)

Full range of fully fitted wardrobes with hanging space, high level shelving and low level drawers.

ENSUITE

7'5 x 6'8 (2.26m x 2.03m)

Modern white suite comprising push button low flush W/C and wall mounted wash hand basin with feature "water spout" mixer taps and drawer storage below. Large walk in, mostly glazed, shower cubicle with "jet system" spa shower with directional body jets and overhead shower unit. Sectional PVC panelling and glazed sides with moving glazed door. Fully tiled floors and walls. Polished chrome heated towel rail.

BEDROOM 2

11'5 x 9'8 (3.48m x 2.95m)

Double radiator.

BEDROOM 3

11'2 x 9'8 (3.40m x 2.95m)

into built-in wardrobe with part mirrored sliding doors. Double radiator.

BATHROOM

9'6 x 6'8 (2.90m x 2.03m)

Modern white suite comprising free standing contemporary style slipper bath with "stand pipe" style mixer taps with water spout and handheld shower. Push button low flush W/C. Modern wash hand basin in vanity unit with water spout taps and storage drawer below. PVC pod style shower cubicle with mixer shower, rose bowl shower head and hand held shower. Sliding cubicle doors. Fully tiled floor and walls. Polished chrome heated towel rail.

OUTSIDE

Shared lane way to tarmac private lane. Large double pillars and feature electric gates to substantial tarmaced drive with parking for 10 plus cars. Gardens to front, side and rear in neat lawn and kerbed hedging. Extensive patio to side and rear with far reaching views over open country side. Outside tap and light.

INTEGRATED GARAGE

18'7 x 11'7 (5.66m x 3.53m)

Electric sectional insulated up and over door. Oil fired boiler. "Beam" receptacle. Two windows to front. Power and light. May be suitable for conversion to fourth bedroom (subject to necessary approvals).

DETACHED MODULAR GARAGE WITH LEAN-TO

20'6" x 13'7" (6.25 x 4.15)

Power and light.

IMPORTANT NOTE TO ALL POTENTIAL PURCHASERS;

Please note, none of the services or appliances have been tested at this property.





PRS Property Redress Scheme

Country Estates (N.I.) Ltd. for themselves and the Vendors of this property whose agents are, give notice that: These particulars do not constitute any part of an offer or contract. All statements contained in these particulars as to this property are made without responsibility on the part of Country Estates (N.I.) Ltd. or the vendor. None of the statements contained in these particulars as to this property are to be relied on as statements or representations of fact. Any intending purchaser must satisfy himself or otherwise as to the correctness of the statement contained in these particulars. The vendor does not make or give, and neither Country Estates (N.I.) Ltd. nor any person in their employment, has any authority to make or give representation or warranty whatever in relation to this property.

Mortgage IQ WE KNOW WHAT IT TAKES

Talk to one of our advisers

12 Church Street, Antrim, Co. Antrim, BT41 4BA
 T: 028 9417 0000
 E: antrim@mortgageIQ.co.uk

Energy Efficiency Rating		Current	Potential
Very energy efficient - lower running costs			
(92 plus)	A		
(81-91)	B	83	83
(69-80)	C		
(55-68)	D		
(39-54)	E		
(21-38)	F		
(1-20)	G		
Not energy efficient - higher running costs			
Northern Ireland			
		EU Directive 2002/91/EC	