

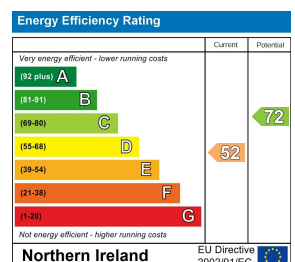


8 Pinkerton Walk New Lodge, Belfast, BT15 2EG

**Offers In The Region Of
£114,950**

Impressive 4 Bedrooms, 2 Bathrom End of Terrace In A Popular Location.

A unique opportunity to purchase a substantial end of terrace situated within this most convenient and popular location. The generously proportioned interior comprises 4 bedrooms with shower room to first floor and family bathroom to 2nd in white suite, lounge and kitchen to ground floor. The dwelling benefits from upvc double glazed windows, gas central heating and has been maintained to a good standard over the years. Conveniently positioned to excellent local amenities with Cityside Shopping Centre and Belfast's New University and the City all within walking distance.



8 Pinkerton Walk

New Lodge, Belfast, BT15 2EG



- Substantial End Of Terrace
- Spacious Kitchen
- Twin Bathrooms
- 4 Bedrooms
- Gas Central Heating
- Walled Rear Patio Garden
- Lounge
- Upvc Double Glazed Windows
- Most Convenient Location

Entrance Hall

Upvc double glazed rear door, panelled radiator, storage.

Lounge

16'6" x 10'11" (5.05 x 3.33)

Attractive fireplace, tiled hearth, wood laminate floor, panelled radiator, understairs cloaks.

Kitchen

14'0" x 8'2" (4.28 x 2.49)

Single drainer stainless steel sink unit, range of units, formica worktops, cooker space, plumbed for washing machine, tumble dryer space, fridge/freezer space, panelled radiator,

First Floor

Landing, airing cupboard.

Bedroom

13'5" x 8'1" (4.09 x 2.47)

Panelled radiator, built-in robe.

Bedroom

9'11" x 8'2" (3.03 x 2.50)

Built-in Robe.

Shower Room

White suite comprising shower cubicle, thermostatically controlled shower unit,

Separate W/c

Low flush wash, pedestal wash hand basin.

Second Floor

Storage cupboard.

Bedroom

13'5" x 8'0" (4.11 x 2.46)

Panelled radiator, built-in robe.

Bedroom

13'6" x 8'3" (4.13 x 2.52)

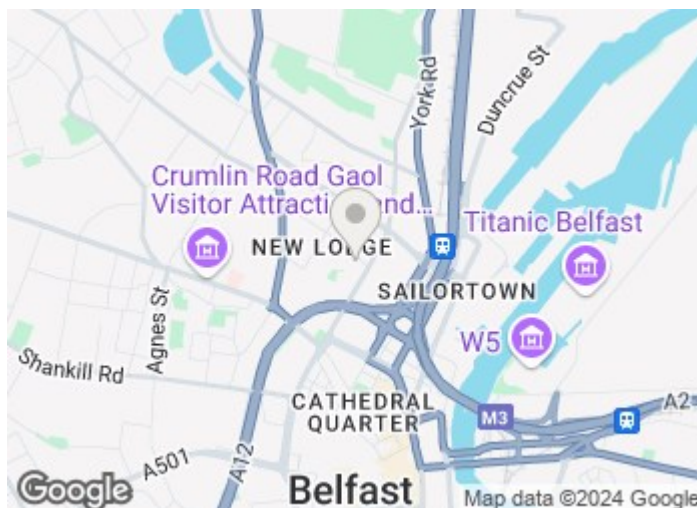
Panelled radiator.

Bathroom

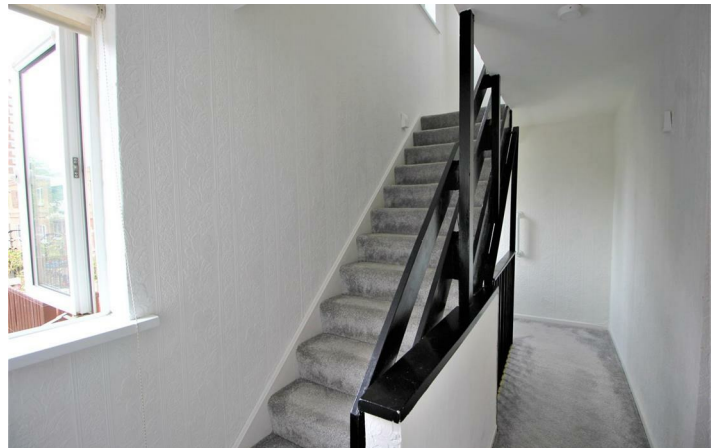
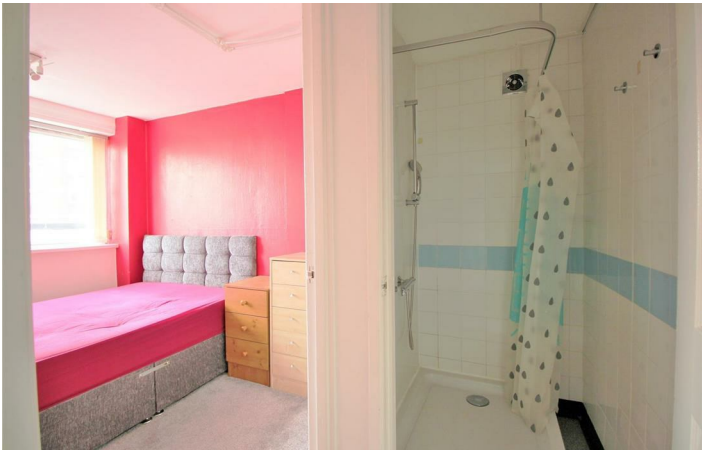
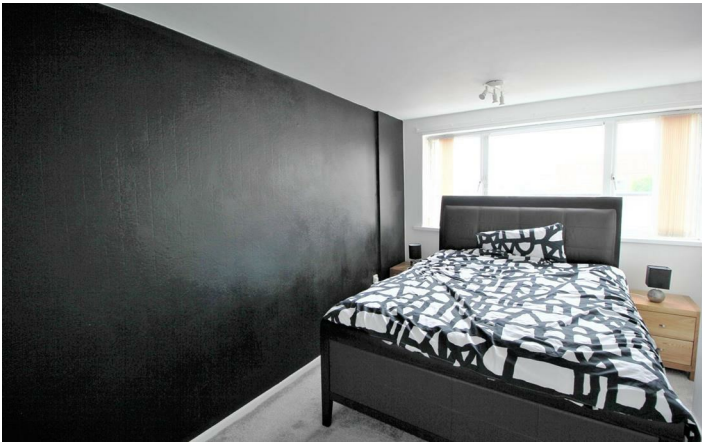
White suite comprising panelled bath, telephone hand shower, wash hand basin, low flush wc, partly tiled walls, panelled radiator, pvc panelled walls,

Outside

Forecourt, rear patio garden, garden store, outside tap.



Directions



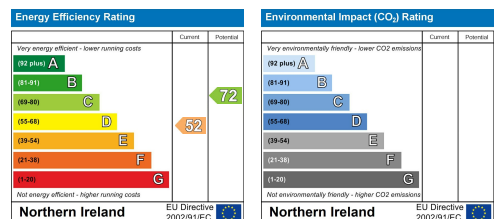
Floor Plan

8, Pinkerton Walk, BELFAST, BT15 2EG



Total Area: 106.2 m² ... 1143 ft² (excluding garden store)
 All measurements are approximate and for display purposes only

These particulars, whilst believed to be accurate are set out as a general outline only for guidance and do not constitute any part of an offer or contract. Intending purchasers should not rely on them as statements of representation of fact, but must satisfy themselves by inspection or otherwise as to their accuracy. No person in this firm's employment has the authority to make or give any representation or warranty in respect of the property.



ULSTERPROPERTYSALES.CO.UK

- ANDERSONSTOWN**
 028 9060 5200
- BALLYNAHINCH**
 028 9756 1155
- CAUSEWAY COAST**
 0800 644 4432
- FORETSIDE**
 028 9064 1264
- NEWTOWNARDS**
 028 9181 1444
- BALLYHACKAMORE**
 028 9047 1515
- BANGOR**
 028 9127 1185
- CAVEHILL**
 028 9072 9270
- GLENGORMLEY**
 028 9083 3295
- RENTAL DIVISION**
 028 9070 1000
- BALLYMENA**
 028 2565 7700
- CARRICKFERGUS**
 028 9336 5986
- DOWNPATRICK**
 028 4461 4101
- MALONE**
 028 9066 1929



John McLarnon trading under licence as Ulster Property Sales (Cavehill)
 @Ulster Property Sales is a Registered Trademark