

# 5 Edendale

LIMAVADY ROAD

SALE AGREED

## 5 Edendale Limavady Road Derry / Londonderry, BT47 6LP

 homepage

 5  4  2 

This prestigious new home just off the Limavady Road offers the perfect family environment in one of City's most sought after residential locations.

A Luxurious Five Bedroom Detached Residence boasting spacious open plan living accommodation and the privacy of a private gated entrance with enclosed front and rear gardens.

This 5 bedroom, 2 reception, 4 bathroom home offers a full designer turnkey package with some exceptional internal features and quality of finish.

Homes of this quality and standard rarely come onto the open market.

**Offers over £575,000**

### Viewing

Please contact our Homepage NI Office on 08000465102 if you wish to arrange a viewing appointment for this property or require further information.

- LARGE DETACHED FAMILY RESIDENCE
- OPEN PLAN KITCHEN / DINING / LIVING
- GROUND FLOOR BEDROOM
- LUXURY TURNKEY FINISHES
- DETACHED GARAGE
- PRIVATE ENCLOSED GARDENS
- SOUGHT AFTER LOCATION

THIS IMAGE IS FOR ILLUSTRATIVE PURPOSES ONLY

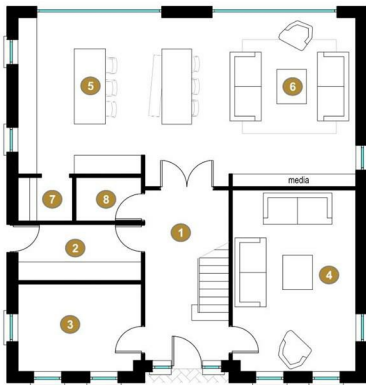


# 5 Edendale, Limavady Road



## 5 Edendale LIMAVADY ROAD

### ground floor



- |                        |             |
|------------------------|-------------|
| 1. Hall                | 5.4m x 2.7m |
| 2. Utility / Boot Room | 4.0m x 1.8m |
| 3. Study / Bedroom     | 3.7m x 2.8m |
| 4. Lounge              | 5.8m x 3.7m |
| 5. Kitchen / Dining    | 6.3m x 5.0m |
| 6. Living              | 5.4m x 4.6m |
| 7. Larder              | 1.8m x 1.4m |
| 8. W.C.                | 2.1m x 1.4m |

homepage  
onlms.co.uk  
BIRNEY ARCHITECTS

This architectural perspective is for illustrative purposes only. The floor plan shown may vary from the actual finish on site. Plans are not to scale and measurements are approximate.

## 5 Edendale LIMAVADY ROAD

### first floor



- |                            |             |
|----------------------------|-------------|
| 10. Void                   |             |
| 11. Master Bedroom         | 4.3m x 4.0m |
| 12. Walk-in Wardrobe       | 2.7m x 2.4m |
| 13. En-suite               | 2.7m x 1.8m |
| 14. Bedroom 2              | 4.3m x 3.7m |
| 15. En-suite               | 2.6m x 1.2m |
| 16. Dressing               | 2.6m x 1.5m |
| 17. Landing (widest point) | 5.2m x 1.2m |
| 18. Family Bathroom        | 2.7m x 2.6m |
| 19. Bedroom 3              | 4.3m x 3.8m |
| 20. Bedroom 4              | 4.3m x 4.0m |

homepage  
onlms.co.uk  
BIRNEY ARCHITECTS

This architectural perspective is for illustrative purposes only. The floor plan shown may vary from the actual finish on site. Plans are not to scale and measurements are approximate.

These particulars, whilst believed to be accurate are set out as a general outline only for guidance and do not constitute any part of an offer or contract. Intending purchasers should not rely on them as statements of representation of fact, but must satisfy themselves by inspection or otherwise as to their accuracy. No person in this firm's employment has the authority to make or give any representation or warranty in respect of the property.

Homepage Estate Agents

Tel: 08000465102 | Email: info@clickhomepage.online

www.clickhomepage.online

