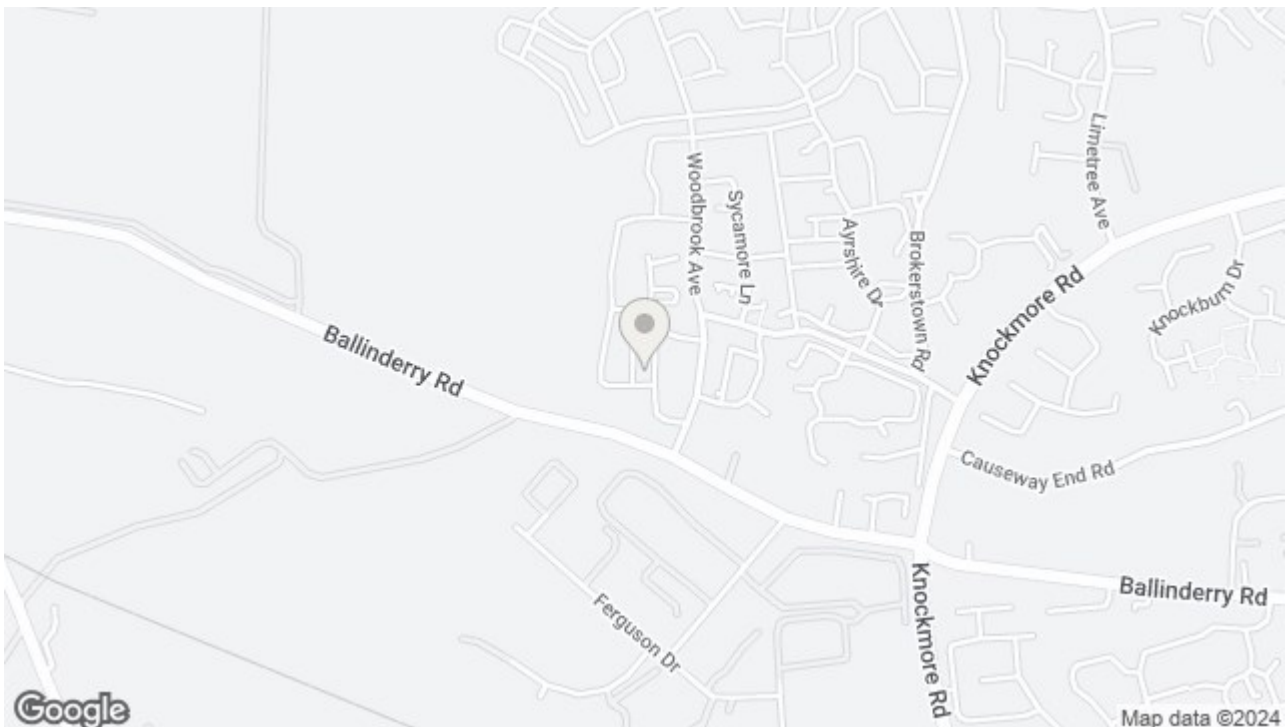




17 WOODBROOK GREEN, LISBURN, BT28 2ZJ



OFFERS AROUND £125,000

Situated just outside of Lisburn City centre, this spacious and modern first floor apartment is perfect for the first time buyer, young couple or investor alike. This beautifully appointed apartment enjoys modern living at its best with open plan kitchen, living and dining area with a large balcony, two bedrooms and a separate bathroom fitted with a modern white suite. The property is further enhanced by gas fired central heating, double glazing and designated car parking. Lisburn is a vibrant city that boasts a wealth of amenities to suit all. Bow Street Mall and a host of high street shopping outlets, entertainment and leisure facilities, pubs and restaurants are all within walking distance as too is public transport. Easy access onto the M1 motorway network, makes for a convenient commute to Belfast and Dublin.



At a glance:

- First Floor Apartment
- Kitchen/Dining/ Living Area
- 2 Bedrooms
- Allocated Parking
- Modern Living
- Balcony Area
- Bathroom
- Convenient Location

Entrance Hall

Bright and spacious entrance hall with access to storage cupboard. Wooden laminate flooring.

Kitchen/ Living/ Dining area

15'3" x 31'10"

Kitchen with range of high and low rise units with integrated stainless steel sink and drainer with tiled splash backs. integrated oven and hob with extractor fan, integrated washer/dryer. integrated fridge and freezer. Through to bright living room with wooden laminate flooring and access to a large balcony area.

Bedroom 1

10'1" x 10'0"

Window to side. Built in robe.

Bedroom 2

10'5" x 10'0"

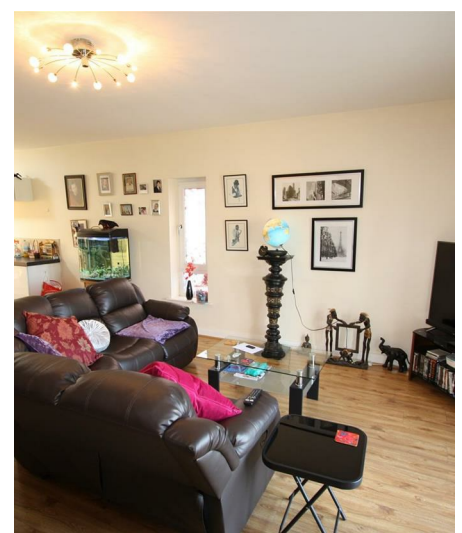
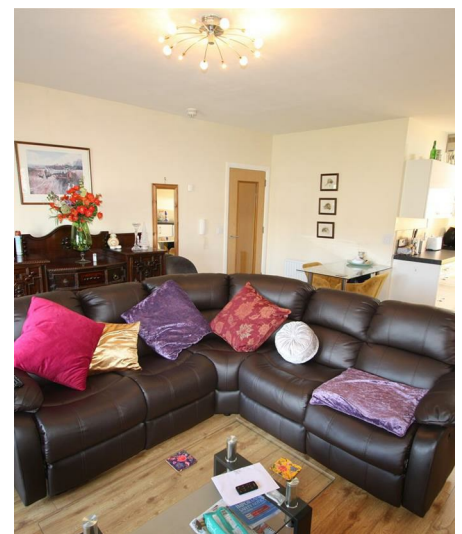
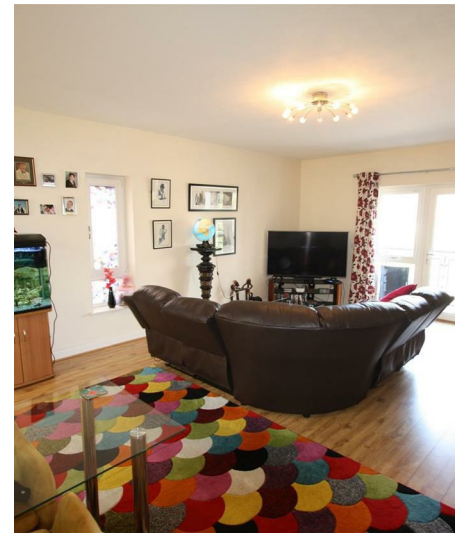
Window to side. Built in robe.

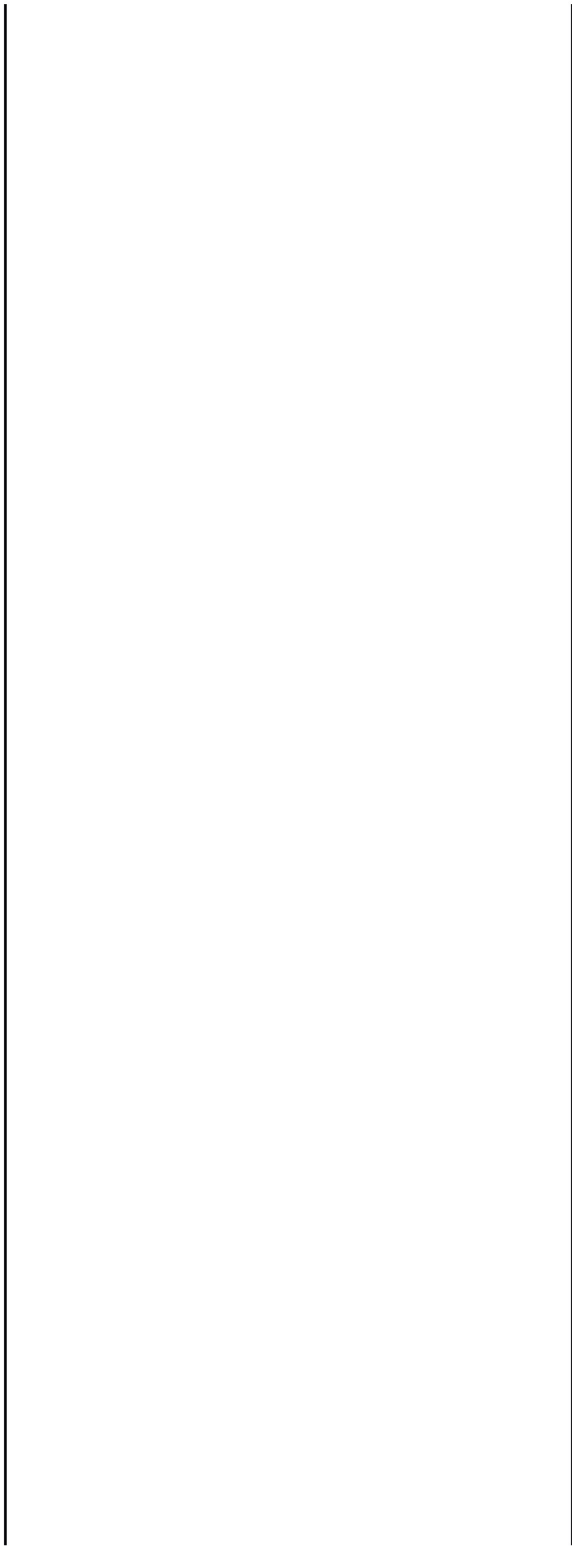
Shower Room

White suite encompassing low flush W/C, wash hand basin and corner shower. Tiled floor and walls.

OUTSIDE

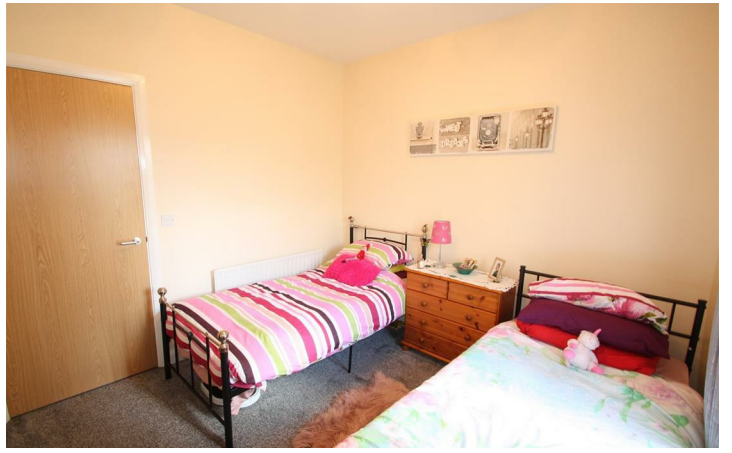
Allocated parking space.
Access to communal green space.







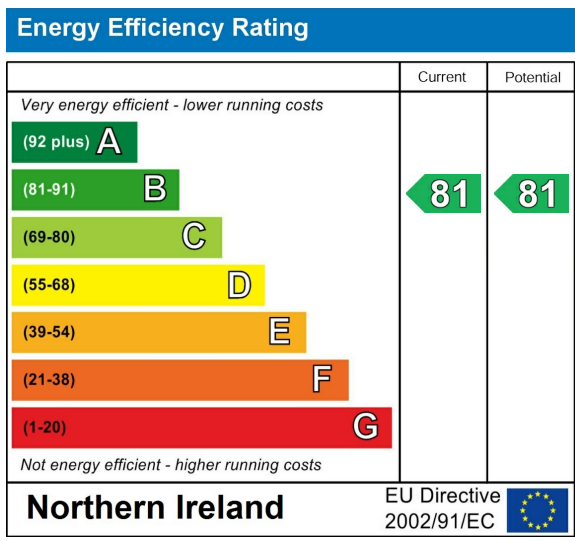




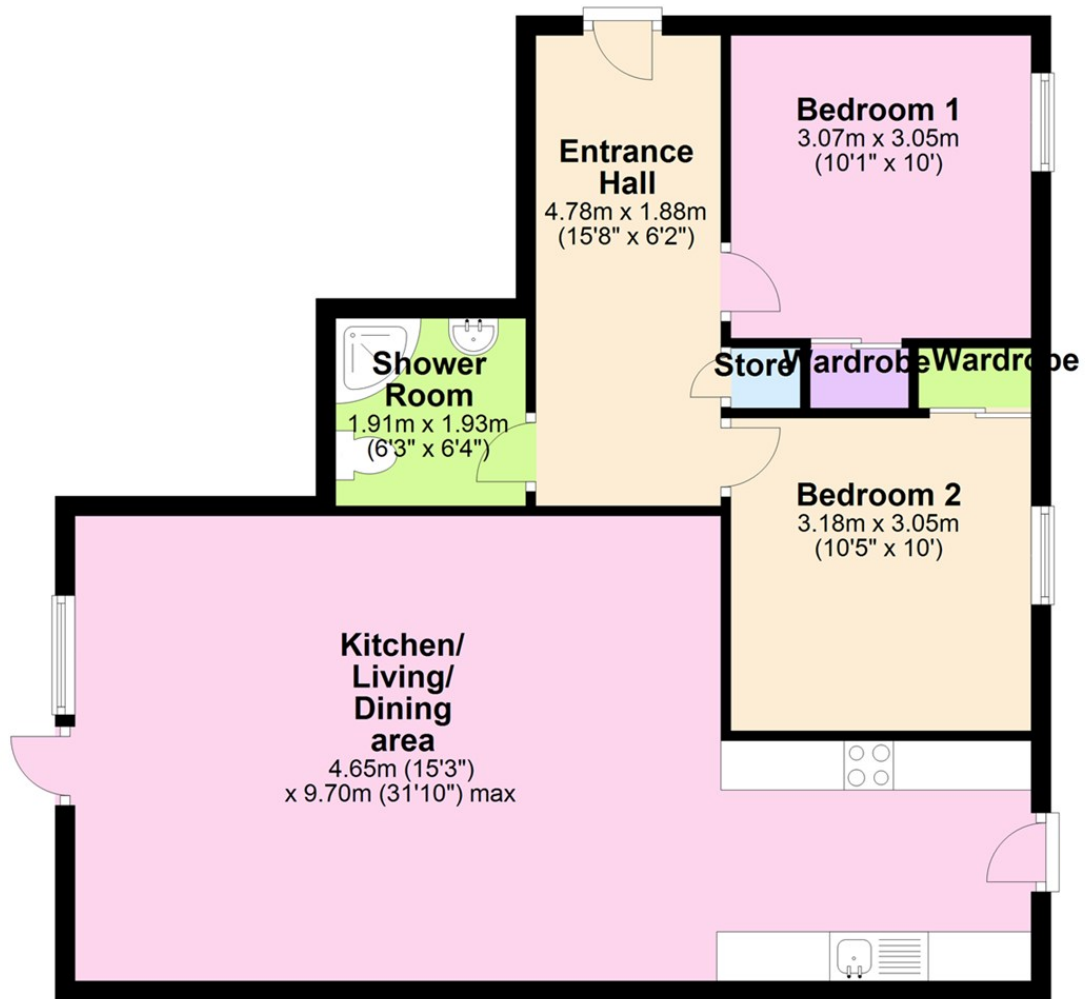








Ground Floor



Questions you may have. **Which mortgage would suit me best?**

How much deposit will I need? What are my monthly repayments going to be?

To answer these and other mortgage related questions contact our mortgage advisor on 0289 756 1155.

Your home may be repossessed if you do not keep up repayments on your mortgage.

We DO NOT charge for initial mortgage consultations. We may charge a fee on completion depending on circumstances. Our typical fee is £250, however, please confirm with Mortgage Consultant at time of appointment.

Please note that we have not tested the services or systems in this property. Purchasers should make/commission their own inspections if they feel it is necessary.

ULSTERPROPERTYSALES.CO.UK

ANDERSONSTOWN
028 9060 5200

BALLYHACKAMORE
028 9047 1515

BALLYMENA
028 2565 7700

BALLYNAHINCH
028 9756 1155

BANGOR
028 9127 1185

CARRICKFERGUS
028 9336 5986

CAUSEWAY COAST
028 7772 5192

CAVEHILL
028 9072 9270

DOWNPATRICK
028 4461 4101

FORESTSIDE
028 9064 1264

GLENGORMLEY
028 9083 3295

MALONE
028 9066 1929

RENTAL DIVISION
028 9070 1000

