

26 Station Road, Dungiven BT47 4LN

Exterior: Garden to both front and rear laid in lawn, spacious gravel driveway and yard offers ample off road parking. Boundaries formed by garden wall to the front and fencing and hedging to side and rear.

Detached Garage: 18' x 12'



P. McDermott

PROPERTY & MORTGAGES



**26 Station Road,
Dungiven BT47 4LN**

This delightful four bedroom home is situated in the very popular Station Road area. It is situated on a large spacious plot with both ample gardens to the rear and gravel driveway and yard which offers ample off road parking. Accommodation offers four bedrooms and has also benefited from recent new extension which provided a large open plan kitchen, dining and living area. It is within easy walking distance of all local amenities. Early viewing is highly recommended.

Additional Features:

- Spacious Four Bedroom Semi-detached Home
- Much Sought After Location on Station Road
- Large Gardens and Driveway
- uPVC Double Glazed Windows
- Oil Fired Heating

PRICE: OFFERS AROUND £155,000
VIEWING: BY APPOINTMENT THROUGH AGENT

P. McDermott Property & Mortgages
130 Main Street | Dungiven | Co. Derry BT47 4LG
Telephone: 028 7774 0100 Email: pmcdprops@gmail.com

Entrance Hall: uPVC front door, cloaks and storage under stairs, cushion flooring.

Living Room: 13' x 12'7" Feature open fire with wooden surround and tiled hearth, TV points, cushion flooring.



Kitchen/Dining: 22'2" x 19'2" (at widest point) Spacious open plan kitchen, dining and living area with excellent range of eye and low level fitted kitchen units in a solid oak finish incorporating 4 ring electric hob, 'Samsung' electric oven, 'Kenwood' integrated dishwasher, 'Indesit' fridge freezer, stainless steel single drainer sink with mixer taps, TV points, cushion flooring, walls tiled between kitchen units, uPVC back door.



Bedroom 1: 10'8" x 9'7" Carpet.



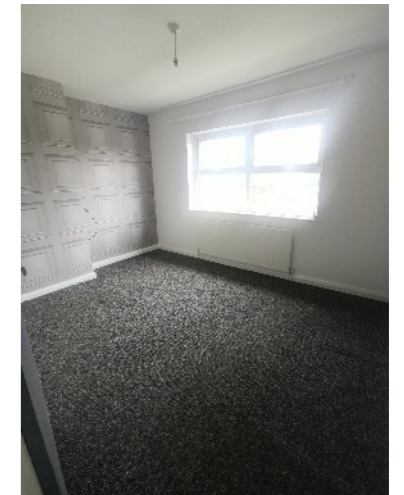
Bathroom: 8'4" x 5'11" Low flush wc, pedestal wash hand basin with splash back, fully tiled shower cubicle with electric shower and bi-fold cloak.

1st Floor Landing: Carpet to stairs and landing, cloaks, shelved hot press.

Bedroom 2: 10'9" x 9'8" Carpet.

Bedroom 3: 12'8" x 9'9" Carpet.

Bedroom 4: 10'4" x 8' Carpet.



Bathroom: 8'9" x 7' Suite includes low flush, pedestal wash hand basin and bath with electric shower over, walls part tiled, cushion flooring.

