



Bond
Oxborough
Phillips

Changing Lifestyles

Greensills
South Zeal
EX20 2JS



BRITISH
PROPERTY
AWARDS

2023



GOLD WINNER

ESTATE AGENT
IN OKEHAMPTON



Guide Price - £400,000



Changing Lifestyles

01837 500600

Greensills, South Zeal, EX20 2JS.



An immaculately presented three bedroom cottage, located within an idyllic Devonshire village with a prestigious national park on your doorstep...

- Delightful End of Terrace Cottage
- Offering Accommodation over Three Floors
- Bespoke Kitchen
- Practical Utility Room
- Offering Three Bedrooms
- Characterful Features Throughout
- Far Reaching Views
- Historical Medieval Village Location
- Rear Courtyard plus Generous Detached Garden
- EPC - D



Greensills is an abode of absolute beauty, located in a much sought-after and breathtakingly gorgeous village. Dartmoor being just steps away, combined with the local village shop, pubs, and close proximity to city links and the coast, makes this a must-have property.

As soon as one steps inside, they are captivated by the home's character, quality, and immaculate finish. Sand blasted stonework provides the ideal backdrop for the wood burner, while also pairing perfectly with the modern decor all over the three levels, making it impossible not to adore.

The ground floor features an entrance porch, ideal for putting away coats and boots after a stroll on the moor, plus an amazing living-dining area which offers a wealth of space and allows for a range of possibilities for arranging furniture through the year. Furthermore, there is a custom-built kitchen with an island and a generous utility room which opens to the enclosed garden.

The upper floors present two delightful double bedrooms and a family bathroom, as well as the luxurious master bedroom with its incredible walk-in dressing area and majestic views of Dartmoor.

The home's front garden has been professionally landscaped with a number of easy-to-care-for plants and shrubs, with a classic granite staircase taking you up to the entrance porch.

To the rear of the property is an enclosed courtyard garden laid with artificial grass, perfect for relaxing with friends over brunch, lunch or evening drinks. As well as the courtyard garden, there is a private path leading to a large detached garden. Enclosed by an ancient granite wall, mature hedging, and colorful flower beds, this garden has a large timber shed that could potentially be used as a stable.



The property is situated within the heart of the thriving village of South Zeal, within Dartmoor National Park and a conservation area.

The house is within easy walking distance of the primary school, the village hall/pre-school, the village shop/tea room and post office, and two village pubs. The Oxenham Arms, is a former 12th Century monastery and has hotel accommodation, and the Kings Arms is the social centre of the village. Just a few minutes from the door, you can be on the footpaths up towards Dartmoor's Cosdon Beacon, wild swimming at Shilley Pool and many other fantastic walking trails.

South Zeal is close to Chagford, Throwleigh and Moretonhampstead, home to many independent shops, restaurants, and coffee shops. South Zeal is host to an annual folk festival and many other village events including open gardens and village fayres.

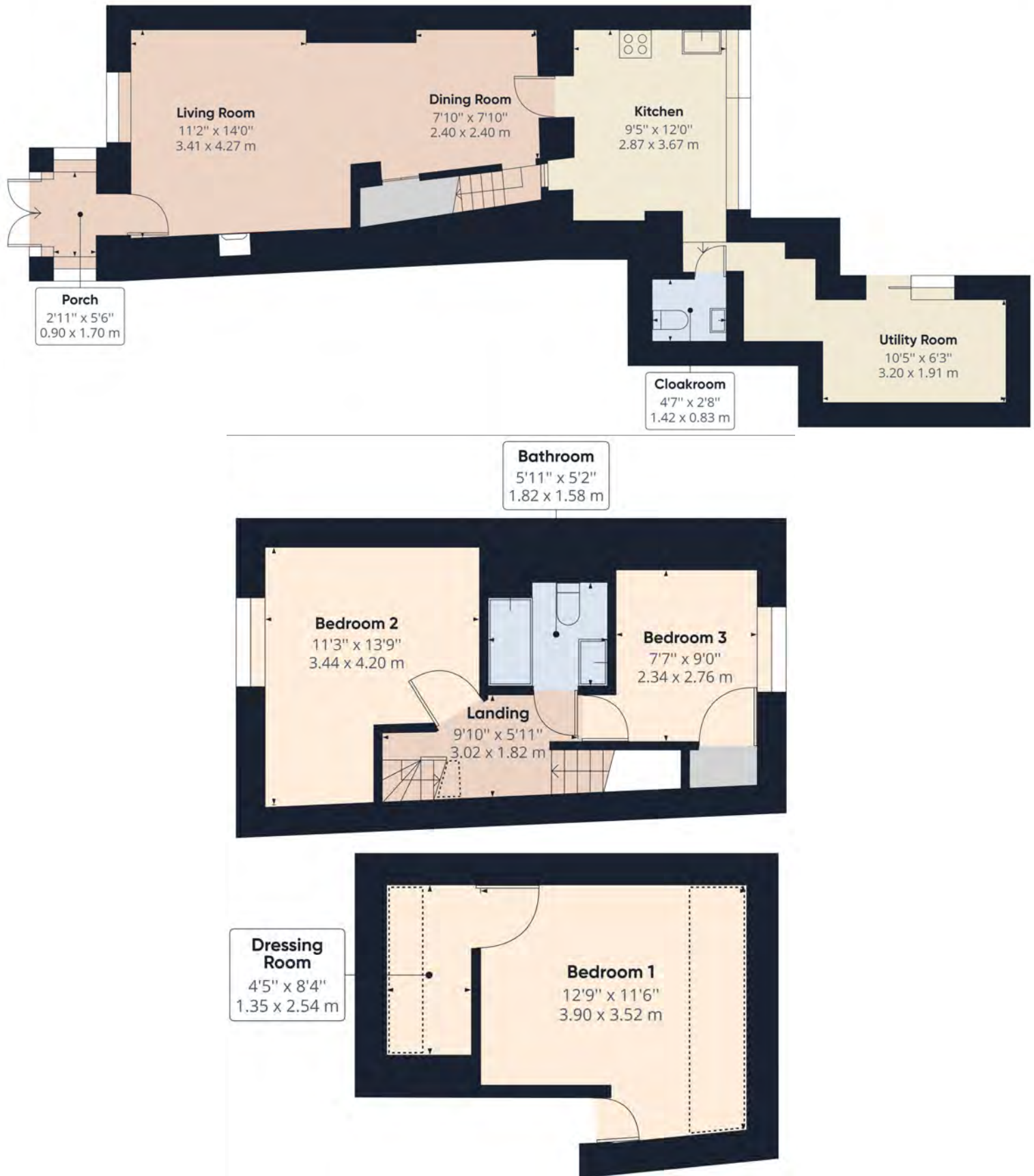
Changing Lifestyles



Please do not hesitate to contact the team at Bond Oxborough Phillips Sales & Lettings on **01837 500600** for more information or to arrange an accompanied viewing on this property.

Scan here for our Virtual Tour:





Have a property to sell or let?

If you are considering selling or letting your home, get in contact with us today on 01837 500600 to speak with one of our expert team who will be able to provide you with a free valuation of your home.

We have the facility to refer purchasers and vendors to conveyancing, mortgage advisors and Surveyors. It is your decision if you choose to deal with any of these companies however should you choose to use them we would receive a referral fee from them for recommending you. We will receive a referral fee between £50 - £300 depending on the company & individual circumstances. We have carefully selected these associates for the quality of their work and customer service levels.

Consumer Protection Regulations: We have not tested any apparatus, equipment, fixtures and fittings or services and so cannot verify that they are in working order or fit for the purpose. References to the Tenure of a Property are based on information supplied by the seller. We have not had sight of the Title Documents. A buyer is advised to obtain verification from their solicitor or surveyor. Floorplans shown are for guidance only and should not be relied upon. Items shown in photographs are NOT included unless specifically mentioned within these details. They may however be able by separate negotiation. You are advised to check the availability of this property before travelling any distance to view. Particulars are produced in good faith to the best of our knowledge and are set out as a general guide only.