



# DRUMMAN MEADOWS

OFF PORTADOWN ROAD  
ARMAGH

Computer Visual

## Gardeners Cottage Type B

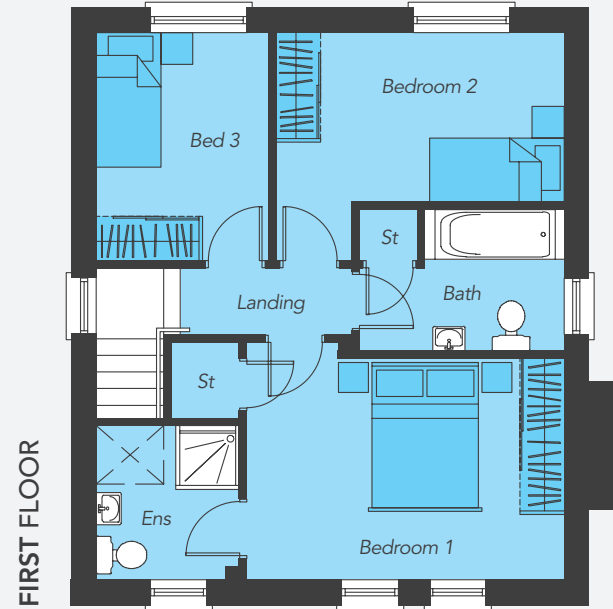
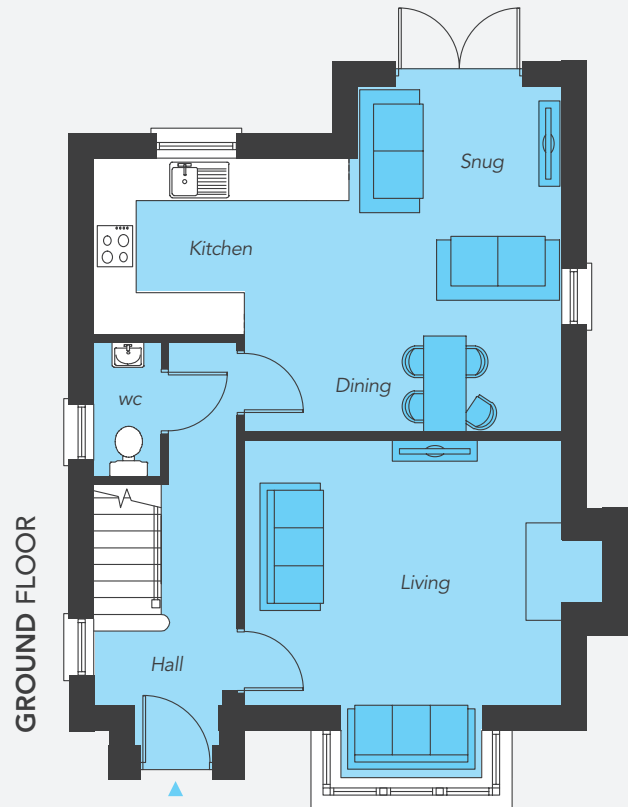
Total Floor Area:  
1,159 sq ft approx.





# DRUMMAN MEADOWS

OFF PORTADOWN ROAD  
ARMAGH



## Gardeners Cottage Type B

Total Floor Area:  
1,159 sq ft approx.

### GROUND FLOOR

Entrance Hall	
Living (plus bay)	14'8" x 12'3"
Kitchen	12'2" x 8'2"
Dining / Snug	16'0" x 9'5"
WC	6'2" x 3'1"

### FIRST FLOOR

Bedroom 1	14'8" x 10'3"
Ensuite	7'1" x 6'7"
Bedroom 2 (max)	13'3" x 10'6"
Bedroom 3	10'6" x 8'0"
Bathroom	9'5" x 6'6"

Layout of Kitchen, Bathroom, Ensuite & WC subject to change

