

Willerby Malton
Pentire Holiday Park
Stibb Road
Stibb
Bude
Cornwall



Asking Price: £60,000 Leasehold



Changing Lifestyles

01288 355 066
bude@boproperty.com

Willerby Malton, Pentire Holiday Park, Stibb Road, Stibb,
Bude, Cornwall, EX23 9HP

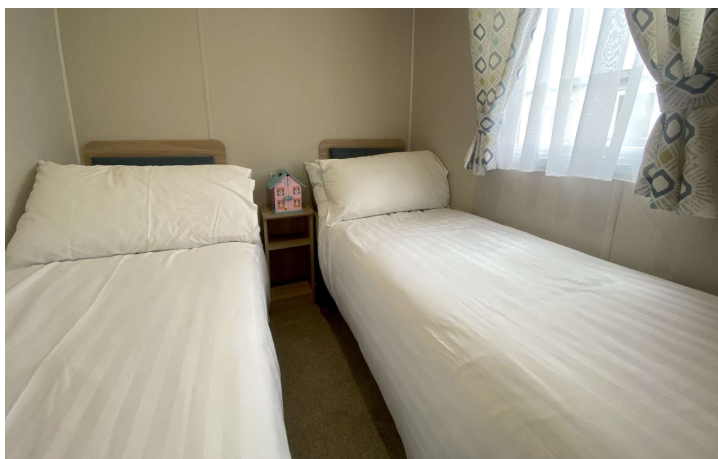
Changing Lifestyles

This 3 bedroom Willerby Malton is located on the popular Pentire Haven Holiday Resort on the outskirts of the coastal town of Bude. This 2021 model benefits from a luxury finish, LPG gas central heating and double glazing throughout. The property comprises of an open plan kitchen/diner and lounge with double patio doors opening onto a balcony perfect for Al fresco dining, 3 bedrooms and a family bathroom. The Willerby Malton provides everything you love about getting away, with space for the whole family.

With a clean, modern interior, the Malton is the perfect introduction to spacious holiday home living. The open-plan layout and optional double sliding patio doors allow the light to flood in as soon as you walk through the door, whilst still offering a cosy living space. This holiday home has everything you could possibly need in your home-from-home, with 3 bedrooms, a family shower room, and a dining area.

- Willerby Malton 2021 - 12' x 37'
- 3 Bedrooms
- Sleeps 8
- Superb investment opportunity
- Gas Central Heating
- Balcony

EPC: Exempt



Pentire is the perfect location from which to explore the stunning Cornish coastline and countryside. Situated within a short distance of the popular seaside resort of Bude, the park is within easy reach of a choice of beautiful beaches, historic market towns and picture-postcard villages. The area boasts an incredible variety of attractions and entertainment options with freshly caught local seafood being a speciality in restaurants. The epitome of a walker's paradise, Pentire has many dog-friendly beaches, awe-inspiring natural scenery, and an abundance of traditional Cornish pubs. It's relaxation at its finest. Many of our owners love to regularly visit the coastal town of Bude during each stay at their holiday home. With it being located just 5 miles away, and accessible by bus and car from the park, it's within easy reach for everyone. This great town has lots of independent shops and cafés, along with a popular golf course, whilst there are also many restaurants and pubs to try, many of which pride themselves on serving the best, freshly caught, local seafood. Located by the sea, Bude is also home to Summerleaze Beach and Bude Sea Pool, where water sports enthusiasts can take to the waves, and beach goers can enjoy a safe swim. The location of our Bude caravan park is perfect for those looking to make the most of the local area.

Description of the park:

- Open all year round.
- Excellent park standard
- Pet Friendly
- Unique location; ideal for exploring both Cornwall & Devon
- Stunning beaches nearby
- Savour fresh seafood in one of many local restaurants
- Children's play area
- Electric bike hire
- Owners' Events Programme
- Low Site Fees and Fully Managed Sub-letting Service Available
- Tamar Lakes 3.7 Miles Away
- Clovelly 14 miles away
- Bude Sea Pool 5 Miles away
- Boscastle Harbour 18 miles away

We have the facility to refer purchasers and vendors to conveyancing, mortgage advisors and Surveyors. It is your decision if you choose to deal with any of these companies however should you choose to use them we would receive a referral fee from them for recommending you. We will receive a referral fee between £50 - £300 depending on the company & individual circumstances. We have carefully selected these associates for the quality of their work and customer service levels.

Consumer Protection Regulations: We have not tested any apparatus, equipment, fixtures and fittings or services and so cannot verify that they are in working order or fit for the purpose. References to the Tenure of a Property are based on information supplied by the seller. We have not had sight of the Title Documents. A buyer is advised to obtain verification from their solicitor or surveyor. Floorplans shown are for guidance only and should not be relied upon. Items shown in photographs are NOT included unless specifically mentioned within these details. They may however be able by separate negotiation. You are advised to check the availability of this property before travelling any distance to view. Particulars are produced in good faith to the best of our knowledge and are set out as a general guide only.