



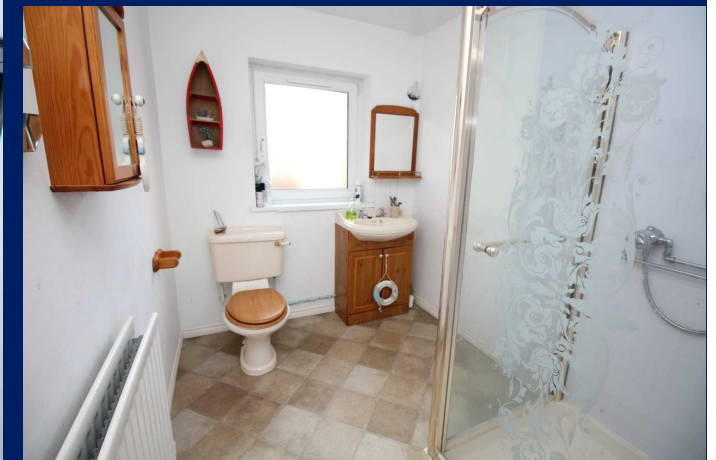
Energy Efficiency Rating		Current	Potential
Very energy efficient - lower running costs			
(92+)	A		
(81-91)	B		
(69-80)	C		
(55-68)	D		
(39-54)	E		52
(21-38)	F	34	
(1-20)	G		
Not energy efficient - higher running costs			
England, Scotland & Wales		EU Directive 2002/91/EC	

19 Adelaide Avenue, Whitehead, BT38 9RZ

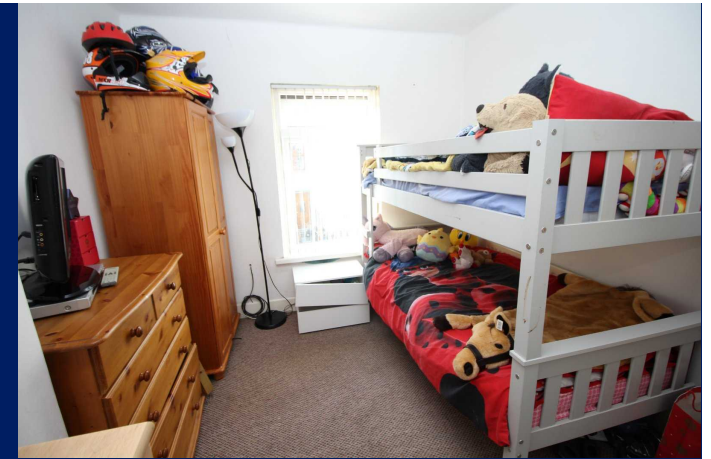
Offers in the region of: £119,950

reedsrains.co.uk





Red brick semi detached property situated in the heart of Whitehead just a short stroll to the town centre and transport links. The internal layout offers two separate reception rooms, kitchen with good range of fitted units, ground floor shower room, three bedrooms and a first floor bathroom suite. Benefiting from an oil fired central heating system, double glazed windows and enclosed rear garden. Internal viewing is via appointment with Reeds Rains on 02893 351727.



- Red Brick Semi Detached Property
- Close To Whitehead Town Centre
- Two Separate Reception Rooms
- Three Bedrooms
- Ground Floor Shower Room
- First Floor Bathroom
- Oil Fired Central Heating System
- Double Glazed Windows

## Description

### Entrance Hall

**Lounge** 12'6" x 9'6" (3.8m x 2.9m)

**Kitchen** 14'7" x 6'1" (4.45m x 1.85m)

**Dining Room / Family Room** 13'8" x 10'  
(4.17m x 3.05m)

### Rear Hall

### Ground Floor Shower Room

### First Floor

### Landing

**Bedroom 1** 10' x 9'2" (3.05m x 2.8m)

**Bedroom 2** 10'7" x 7'8" (3.23m x 2.34m)

**Bedroom 3** 6'7" x 5'9" (2m x 1.75m)

### Bathroom

### Front Garden

### Rear Garden

We may refer you to recommended providers of ancillary services such as Mortgages. We may receive a referral fee for recommending their services. You are not under any obligation to use the services of the recommended provider, which may also be an associated company of Reeds Rains.

FOR MORE DETAILS CONTACT

10 High Street, Carrickfergus, BT38 7AF

T: 02893 351727 | E: [carrickfergus@reedsrains.co.uk](mailto:carrickfergus@reedsrains.co.uk) | W: [reedsrains.co.uk](https://www.reedsrains.co.uk)

 Reeds Rains