

5 Maldon Court, Belfast, BT12 6GY

Price: Offers over £115,000







McGuinness |  
Fleck |



# Light Filled Open Plan South Belfast Living

Price: £115,000

2 | 2 | 1

Set in South Belfast this magnificent duplex apartment in Maldon Court just off the Donegall Road is centrally located to the city centre and close to the thriving Lisburn Road, the Royal & City hospital.

Internally the apartment features light-filled open plan living, kitchen and dining perfect for entertaining. The apartment has two good sized double bedrooms, fabulous upstairs master suite with ensuite and main bathroom.

With easy access to the city centre and the motorway network, gas fired central heating, double glazing and residents parking area we highly recommend internal inspection.

Excellent Apartment

Two Bedrooms Master with En Suite

Gas Fired Central Heating

Double Glazed Windows

Car Parking



**Seamus McFlynn**

Email: [seamus.mcflynn@mcguinnessfleck.com](mailto:seamus.mcflynn@mcguinnessfleck.com)

Phone: 07872 841317

7 Pattons Lane | Hollywood | BT18 9FX  
(0)28 9068 3020 | [info@mcguinnessfleck.com](mailto:info@mcguinnessfleck.com)

McGuinness  
Fleck



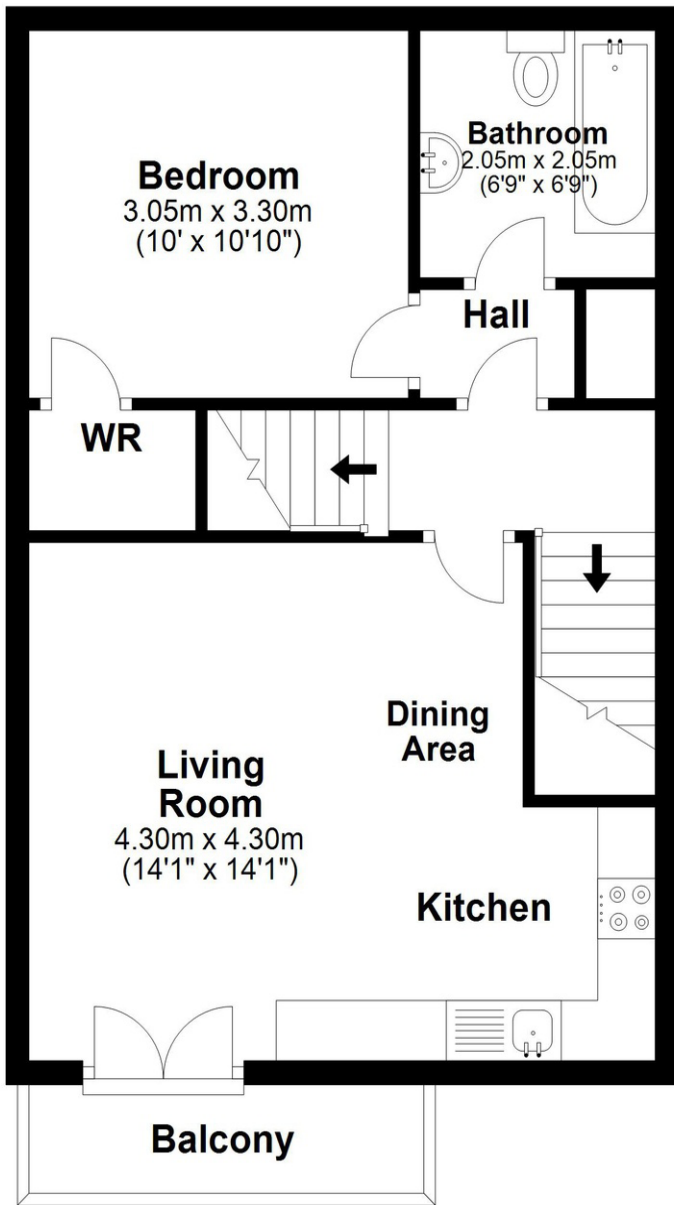


McGuinness |  
Fleck |



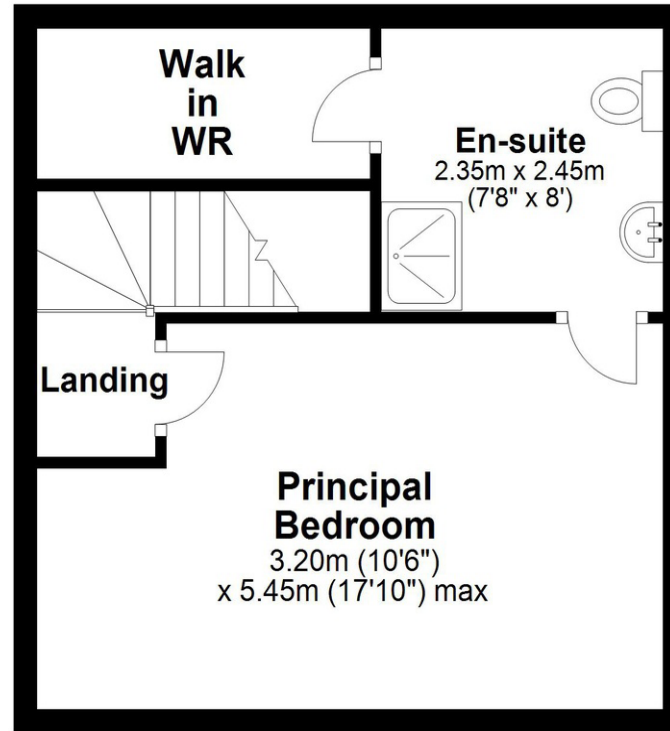


McGuinness |  
Fleck |



## Second Floor

Approx. 29.7 sq. metres (320.0 sq. feet)



Score	Energy rating	Current	Potential
92+	A		
81-91	B		
69-80	C	76   c	79   c
55-68	D		
39-54	E		
21-38	F		
1-20	G		

5 Maldon Court, Belfast, BT12 6GY

Total area: approx. 67.6 sq. metres (727.6 sq. feet)

This plan is for illustrative purposes only.  
Plan produced using PlanUp.