

Tim Martin
— .co.uk



**53-55 Mill Street
Comber
BT23 5EG**

**Rent
£7,500 Per Annum**

**www.timmartin.co.uk
Telephone 028 91 878956**

SUMMARY

Occupying a superb position on one of Comber's main thoroughfares amongst a wealth of new and well established businesses and residential developments, this ground floor commercial unit extends to approximately 951 sqft or thereabouts and is suitable for a wide range of uses (subject to planning and landlord approval).

The unit was previously used as a Day Spa with the accommodation comprising of a range of treatment rooms, tanning studio, relaxation room, kitchen and WC facilities, whilst car parking is available, by negotiation with the landlord.

The unit remains in close proximity to Comber town square and is convenient to the surrounding towns of Killinchy, Newtownards, Ballygowan with Belfast a short commute away.

FEATURES

- Well Positioned Ground Floor Commercial Unit
- Extending To Approximately 951 Sqft Or Thereabouts
- Previously Used As A Day Spa
- Suitable For A Wide Range Of Uses (Subject To Planning And Landlord Approval)
- Accommodation Comprises Of Treatment Rooms, Tanning Studio And Kitchen / WC Facilities
- Car Parking Available By Negotiation
- Close To Ballygowan, Killinchy, Newtownards And Dundonald



ENTRANCE

Glazed uPVC entrance door with matching side panel; wood laminate floor.

OFFICE/TREATMENT ROOM

224ft² approx; glazed uPVC entrance door; wood laminate floor; ample power points.

SIDE HALLWAY LEADING TO:**TREATMENT ROOM/OFFICE**

100ft² (approx), wood laminate floor; pedestal wash hand basin with mixer tap.

TREATMENT ROOM/OFFICE

90ft² (approx); wood laminate floor; recessed spotlights; wall mounted wash hand basin with mixer tap.

TREATMENT ROOM/OFFICE

98ft² (approx); wood laminate floor; recessed spot lights; pedestal wash hand basin with mono mixer tap.

TANNING STUDIO

68ft² (approx) Max Measurements; wood laminate floor; recessed spotlights.

SEATING AREA/RELAXATION ROOM

100ft² (approx), Max Measurements; wood laminate floor.

TREATMENT ROOM

154ft² (approx), Average Measurements; Wood strip floor; recessed spotlights; cornice ceiling.

KITCHEN

117ft² (approx); range of high and low level cupboards; single drainer stainless steel sink unit with mono mixer tap; space and plumbing for washing machine; space for fridge; wood laminate worktops; Ariston gas fired boiler; separate wc; with low flush wc; glazed uPVC door to rear.

OUTSIDE

Parking space available by negotiation with the landlords.

RENT

£7500.00 per annum (exclusive).

TOTAL NAV

TBC

RATES PAYABLE

TBC

PLEASE NOTE

All prospective tenants should make their own enquiries to confirm the NAV/Rates payable.

TERM

By negotiation

DEPOSIT

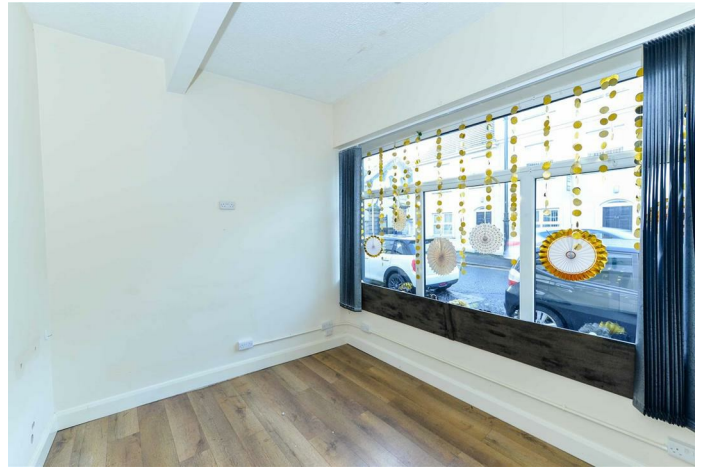
3 months rent

LEASE

Full repairing & insuring lease

VAT

All prices, outgoings etc. are exclusive of VAT but may be subject to VAT.



Energy Efficiency Rating		Current	Potential
Very energy efficient - lower running costs			
(92 plus) A			
(81-91) B			
(69-80) C			
(55-68) D			
(39-54) E			
(21-38) F			
(1-20) G			
Not energy efficient - higher running costs			
Northern Ireland		EU Directive 2002/91/EC	

Comber ■
27 Castle Street, Comber, BT23 5DY
T 028 91 8789596

Saintfield
1B Main Street, Saintfield, BT24 7AA
T 028 97 568300

Tim Martin & Company for themselves and for the vendors of this property have endeavoured to prepare these sales details as accurate and reliable as possible for the guidance of intending purchasers or lessees. These particulars are given for general guidance only and do not constitute any part of an offer or contract. The seller and us as agents, do not make any representation or give any warranty in relation to the property. We would recommend that all information contained in this brochure about the property be verified by yourself or professional advisors. Services, fittings and equipment referred to in the sales details have not been tested (unless otherwise stated) and no warranty will be given as to their condition. All measurements contained within this brochure are approximate. Please contact us prior to viewing the property. If there is any point of particular importance to you we would be pleased to provide additional information or make further enquiries. We will also confirm that the property remains available. This is particularly important if you are contemplating travelling some distance to view the property.