

Stratton Manor Apartments
Diddies
Stratton
Bude
Cornwall
EX23 9DW



Guide Price: £925,000 Freehold



Changing Lifestyles

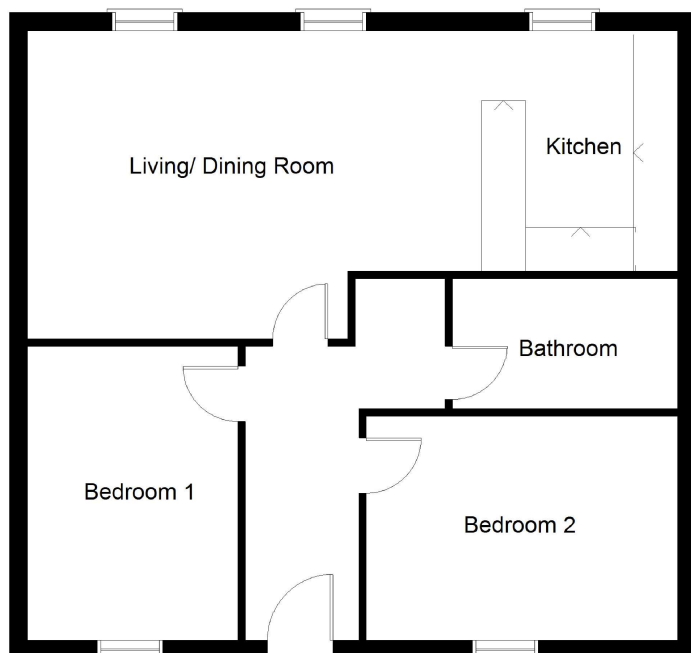
01288 355 066
bude@boproperty.com

Stratton Manor Apartments, Diddies, Stratton, Bude,
Cornwall, EX23 9DW

Changing Lifestyles

6 X APARTMENTS - An exciting and attractive investment opportunity comprising 6 apartments in this converted former Manor house which enjoys a pleasant village location close to the North Cornish coast and beaches. The development comprises 5 2 bedroom apartments and 1 lower ground floor 1 bedroom apartment. Extensive off road parking, turning and amenity area. EPC Ratings - Flat 1 D, Flat 2 D, Flat 3 C, Flat 4 C, Flat 5 C, Flat 6 C.

- ATTRACTIVE INVESTMENT OPPORTUNITY
- 6 APARTMENTS
- CONVERTED MANOR HOUSE
- 5 X 2 BEDROOM APTS
- 1 X LOWER GROUND FLOOR APT
- EXTENSIVE OFF ROAD PARKING
- FLOOR AREA (4854.52 sq.ft /427 sq. metres)
- EPC Ratings - Flat 1 D, Flat 2 D, Flat 3 C, Flat 4 C, Flat 5 C, Flat 6 C.
- COUNCIL TAX BANDS -Flat 1:B, Flat 2:C, Flat 3:C, Flat 4:C, Flat 5:C, Flat 6:C



Typical Floor Plan (Apartment 6)

A typical 2 bedroom apartment comprises:

Entrance Hall

Living room/kitchen - open plan - 30'5" x 14'4" (9.27m x 4.37m)

Superb light and airy room with 3 window to rear elevation enjoying distant countryside views. Modern Fitted Kitchen with matching base and wall mounted cupboard units and work surfaces incorporating single drainer sink unit. Built-in electric oven and 4 ring gas hob.

Bedroom 1 - 13'5" x 9'7" (4.1m x 2.92m)

Bedroom 2 - 12'1" x 9'7" (3.68m x 2.92m)

Bathroom - 8' x 6'2" (2.44m x 1.88m)

Fully fitted suite comprising shower bath, pedestal wash basin and close coupled WC.

Services - Mains electricity, water, drainage and gas.

Directions

From Bude follow the signs to Stratton and upon reaching the centre of the village take the left hand turn next to the Kings Arms public house, proceed up the hill and turn right into Diddies Road. Continue for approximately 400 yards whereupon Stratton Manor will be found on the right hand side.

We have the facility to refer purchasers and vendors to conveyancing, mortgage advisors and Surveyors. It is your decision if you choose to deal with any of these companies however should you choose to use them we would receive a referral fee from them for recommending you. We will receive a referral fee between £50 - £300 depending on the company & individual circumstances. We have carefully selected these associates for the quality of their work and customer service levels.

Consumer Protection Regulations: We have not tested any apparatus, equipment, fixtures and fittings or services and so cannot verify that they are in working order or fit for the purpose. References to the Tenure of a Property are based on information supplied by the seller. We have not had sight of the Title Documents. A buyer is advised to obtain verification from their solicitor or surveyor. Floorplans shown are for guidance only and should not be relied upon. Items shown in photographs are NOT included unless specifically mentioned within these details. They may however be able by separate negotiation. You are advised to check the availability of this property before travelling any distance to view. Particulars are produced in good faith to the best of our knowledge and are set out as a general guide only.