



Bond
Oxborough
Phillips

Changing Lifestyles

The Chapel House

Camelford

PL32 9PJ



Guide Price - £440,000



Changing Lifestyles

01208 814055

The Chapel House Camelford PL32 9PJ



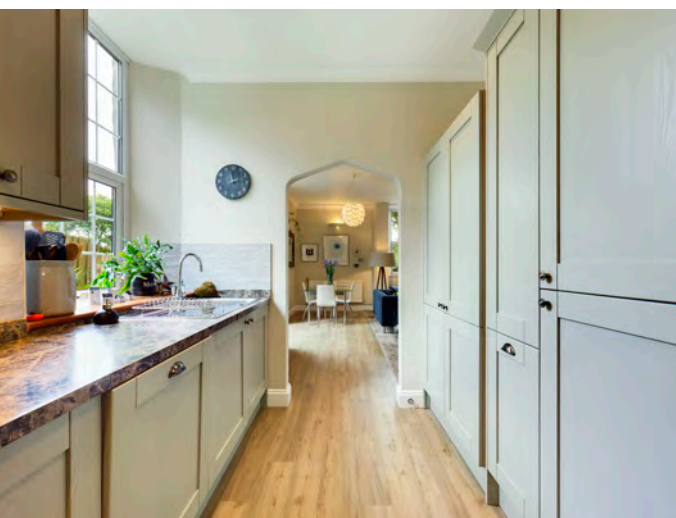
- Charming Features Throughout
- Impressive Kitchen Space
- Four Double Bedrooms
- Mature garden
- Exposed Stone
- Allocated Parking
- Popular Town Location
- Council Tax Band - D
- EPC - D



Dating back further than 1810 this imposing Cornish stone converted chapel is simply stunning.

From the moment you step inside the front door you will find that this home literally wraps its arms around you. The current owners style and taste compliments the whole living area, it's tranquil and contemporary feel combines wonderfully with the elegance and traditional features that you would expect to find during this era.

Internally, the home boasts four double bedrooms, one of which is situated within the attic which is extremely versatile in use, a recently installed shower room/cloakroom a sun drenched lounge and a recently fitted traditional 'Shaker' style kitchen.



Outside the gardens are of proportionate size, extremely private and enclosed, there is allocated parking and excellent road links to the North Coast of Cornwall, with the nearest beach; Trebarwith Strand only a mere 10 minute drive away. We are absolutely sure that you will not be disappointed and highly recommend stepping over the threshold to experience this beautiful home.

Changing Lifestyles



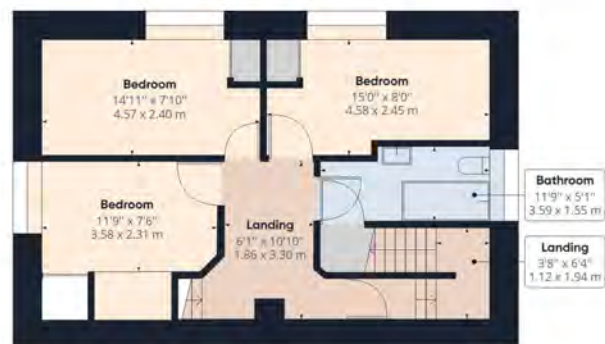
Please do not hesitate to contact
the team at
Bond Oxborough Phillips
Sales & Lettings on
01208 814055
for more information or to
arrange an accompanied viewing
on this property.

Scan here for
our Virtual Tour:





Floor 0 Building 1



Floor 1 Building 1



Floor 2 Building 1

Have a property to sell or let?

If you are considering selling or letting your home, get in contact with us today on 01208 814055 to speak with one of our expert team who will be able to provide you with a free valuation of your home.

We have the facility to refer purchasers and vendors to conveyancing, mortgage advisors and Surveyors. It is your decision if you choose to deal with any of these companies however should you choose to use them we would receive a referral fee from them for recommending you. We will receive a referral fee between £50 - £300 depending on the company & individual circumstances. We have carefully selected these associates for the quality of their work and customer service levels.

Consumer Protection Regulations: We have not tested any apparatus, equipment, fixtures and fittings or services and so cannot verify that they are in working order or fit for the purpose. References to the Tenure of a Property are based on information supplied by the seller. We have not had sight of the Title Documents. A buyer is advised to obtain verification from their solicitor or surveyor. Floorplans shown are for guidance only and should not be relied upon. Items shown in photographs are NOT included unless specifically mentioned within these details. They may however be able by separate negotiation. You are advised to check the availability of this property before travelling any distance to view. Particulars are produced in good faith to the best of our knowledge and are set out as a general guide only.