

# Dougan

RESIDENTIAL

Telephone 028 9030 8855  
[douganproperty.com](http://douganproperty.com)



**Apt 15, Yew Tree Mews,**  
Dunmurry, Belfast, BT17 9FU

**Asking Price £169,950**



## KEY FEATURES

- Stunning Recently Constructed Penthouse Apartment With Balcony
- Spacious Open Plan Living/Kitchen/Dining Room
- Two Generous Sized Bedrooms With Built In Storage  
(Master With Ensuite)
- Luxury Bathroom In White Suite
- Gas Fired Central Heating
- Allocated Off Street Car Parking
- Early Viewing Advised To Appreciate This Fine Apartment





## SUMMARY

Situated in the convenient area of Dunmurry, the unique development strikes the perfect balance between accessibility to amenities whilst providing its residents the opportunity to get back to nature. Why not enjoy a peaceful round of golf on the lush fairways of Dunmurry Golf Club, Colin Park Leisure Golf Course, Balmoral Golf Club & Malone Golf Club, or enjoy a fun-filled family day out at Sir Thomas and Lady Dixon Park? Whatever the activity, this area is sure to appeal to every member of the family.

For those who undergo the daily commute, this stunning apartment is ideally positioned nearby a number of public transport services and benefits from excellent road links to Lisburn, Belfast and beyond.

Internally the apartment comprises of an open plan living/kitchen/dining with a stunning fully fitted modern kitchen, balcony, 2 double bedrooms (master with ensuite) and bathroom in white suite. This apartment further benefits from gas fired central heating, uPVC double glazed windows and an allocated car parking space.

Early viewing highly recommended.



## ACCOMMODATION:

### Second Floor

**LIVING/DINING: 16' 6" x 13' 8" (5.03m x 4.17m)**

**KITCHEN: 9' 7" x 8' 2" (2.92m x 2.49m)**

Impressive high and low level units, handleless kitchen door with choice of colours, worktop with upstands and splashback behind hob. Integrated appliances to include hob, stainless steel electric oven with extraction fan, integrated dishwasher and fridge/freezer.

**BEDROOM (1): 11' 11" x 9' 6" (3.63m x 2.9m)**

**ENSUITE SHOWER ROOM: 10' 1" x 3' 7" (3.07m x 1.09m)**

**BEDROOM (2): 11' 0" x 8' 2" (3.35m x 2.49m)**

**BEDROOM (2): 11' 0" x 8' 2" (3.35m x 2.49m)**

**BATHROOM: 9' 10" x 7' 10" (3m x 2.39m)**

Contemporary white sanitary ware with chrome fittings, low flush WC, heated towel rail, thermostatically controlled shower over bath with screen door, ceramic tiled floor, tiling to shower enclosure and around bath area.

### Outside

Allocated parking space & communal garden areas.











## Kitchens

Impressive high and low level units, handleless kitchen door with Integrated appliances to include hob, stainless steel electric oven with extraction fan, integrated dishwasher and fridge/freezer.

## Bathroom, Ensuite and WC

Contemporary white sanitary ware with chrome fittings

Heated towel rail to bathroom and ensuite

Thermostatically controlled shower over bath with screen door

Showers in ensembles to be thermostatically controlled on slimline trays



## Floor Covering & Tiling

Ceramic tiled floor to entrance hall, kitchen area, bathroom and ensuite

Tiling to shower enclosure and around bath area

Carpets to living area and bedrooms



## External Features

uPVC double glazed windows

Communal and amenity areas are maintained by a management company

## Internal Features

Entrance door with 5 point locking system

Insulated to new building standards, these homes should see up to a 40% saving on energy bills, with extremely high SAP ratings (the higher the SAP rating, the more energy efficient the home)

Gas fired central heating

Comprehensive range of electrical points, sockets, television and telephone points (with BT extension to living area)

Recessed down-lights to kitchen, ensuite and bathroom

Mains smoke and carbon monoxide detectors

Wired for alarm system

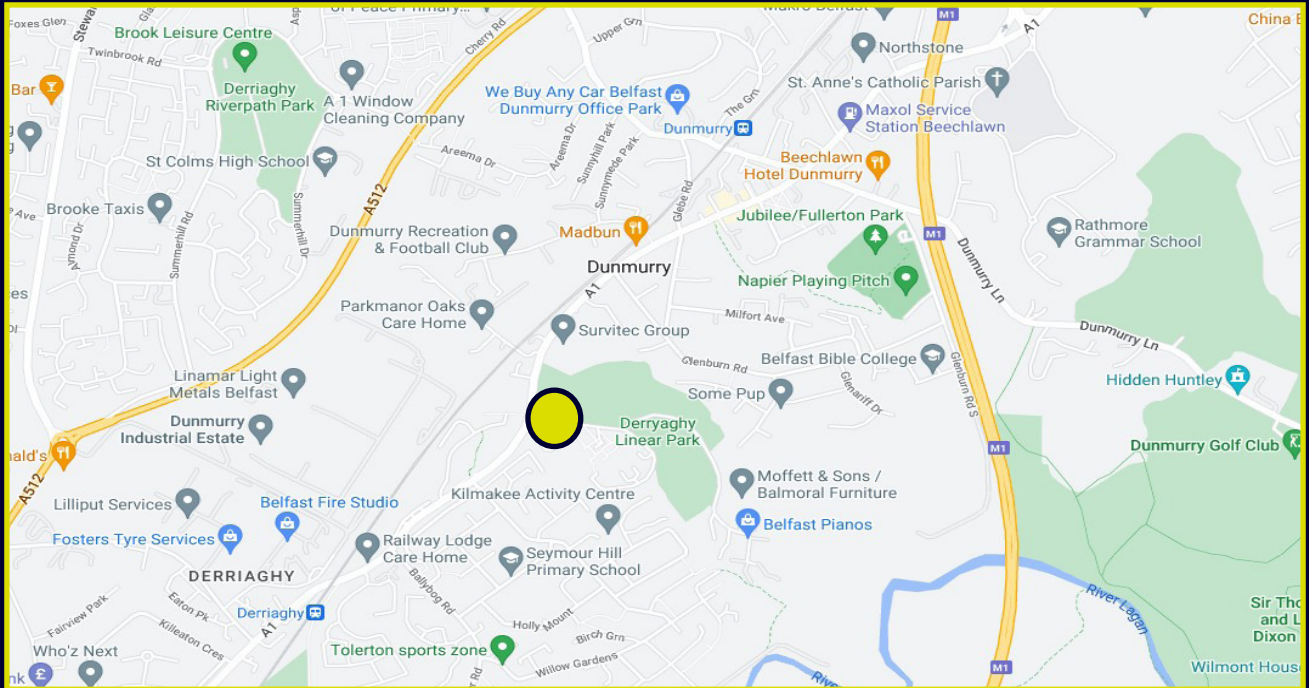




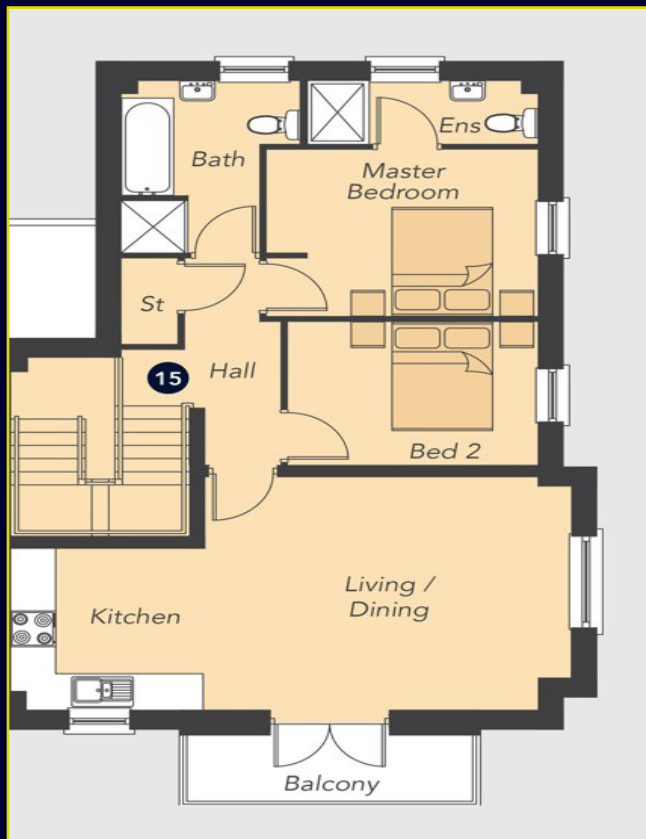




## LOCATION MAP



## FLOOR PLAN



## EPC

Score	Energy rating	Current	Potential
92+	A		
81-91	B	83   B	83   B
69-80	C		
55-68	D		
39-54	E		
21-38	F		
1-20	G		

# Dougan

RESIDENTIAL

6 Orpen Shopping Centre Upper Lisburn Road  
 Belfast BT10 0BG  
 Telephone 028 9030 8855  
 Email [info@douganproperty.com](mailto:info@douganproperty.com)  
 Web [www.douganproperty.com](http://www.douganproperty.com)



**RICS**

Regulated by RICS

Dougan Residential for themselves and for the Vendors or Lessors of the property whose agents they are give notice that; i) these particulars are given without responsibility of Dougan Residential or the Vendors or Lessors as a general outline only, for the guidance of prospective purchasers or tenants, and do not constitute the whole or any part of an offer or contract; ii) Dougan Residential cannot guarantee the accuracy of any description, dimensions, references to condition, necessary permissions for use and occupation and other details contained herein and any prospective purchasers or tenants should not rely on them as statements or representations of fact but must satisfy themselves by inspection or otherwise as to the accuracy of each of them; iii) no employee of Dougan Residential has any authority to make or give any representation or warranty or enter into any contract whatsoever in relation to the property; iv) VAT may be payable on the purchase price and/or rent, all figures are quoted exclusive of VAT, intending purchasers or lessees must satisfy themselves as to the applicable VAT position, if necessary by taking appropriate professional advice; v) Dougan Residential will not be liable, in negligence or otherwise, for any loss arising from the use of these particulars.