



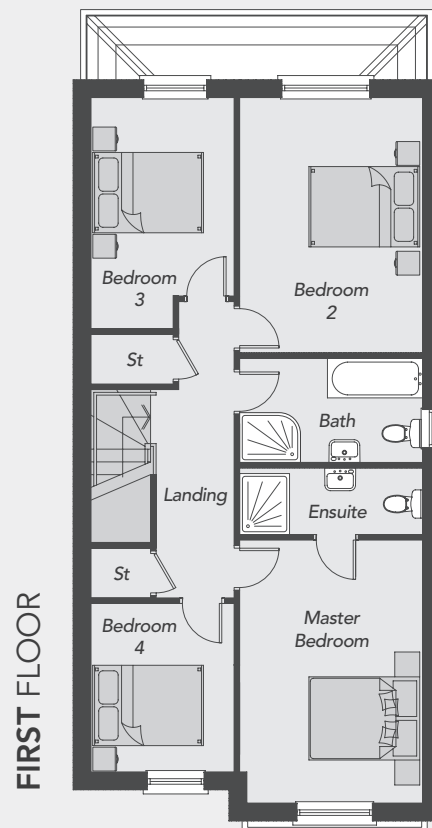
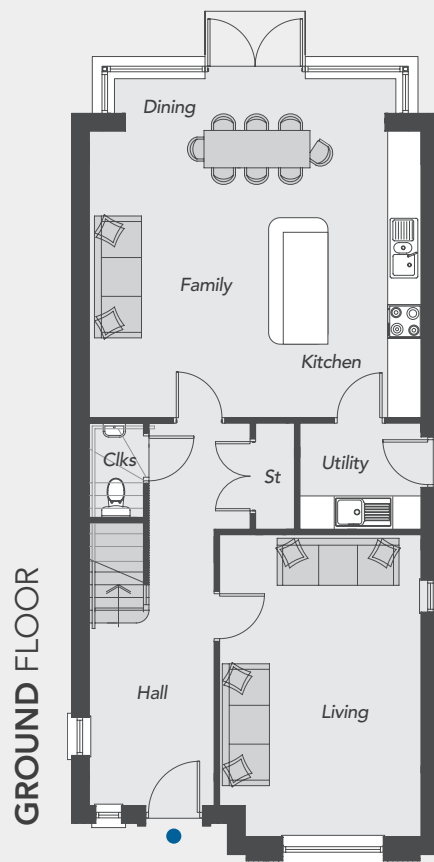
# *The Eaton*

Total Floor Area: 1640 sq ft approx.



**Drumnagoon  
Park**  
DRUMNAGOON ROAD  
CRAIGAVON

Visit us online at; [www.drumnagoonpark.co.uk](http://www.drumnagoonpark.co.uk)



# The Eaton

## GROUND FLOOR

Entrance Hall	
Living	17'0" x 11'1"
Family/Dining/Kitchen	20'1" x 15'4"
Utility Area	7'1" x 6'3"
Cloakroom	5'6" x 3'2"

## FIRST FLOOR

Master Bedroom <i>Max</i>	15'6" x 10'9"
Ensuite	10'9" x 3'11"
Bedroom 2	15'1" x 10'9"
Bedroom 3 <i>Max</i>	13'8" x 8'5"
Bedroom 4	9'11" x 8'5"
Bathroom	10'9" x 6'2"

**Total Floor Area**  
1640 sq ft approx.



All dimensions are approximate and 3D computer generated images are for illustration purposes only, both of which may be subject to change.