



Bond
Oxborough
Phillips

Changing Lifestyles

4 The Maltings
Black Torrington
Beaworthy
Devon
EX21 5PR

Asking Price: £300,000
Freehold



Changing Lifestyles

01409 254 238
holsworthy@bopproperty.com

4 The Maltings, Black Torrington, Beaworthy, Devon, EX21 5PR



- DETACHED BUNGALOW
- 3 BEDROOMS
- SOUGHT AFTER VILLAGE LOCATION
- FRONT & REAR GARDENS
- OFF ROAD PARKING FOR 2 VEHICLES
- ADJOINING GARAGE
- WELL PRESENTED ACCOMMODATION
- EPC: C



An opportunity to acquire this well presented, 3 bedroom, detached bungalow situated on the edge of this sought after village location. The residence benefits from well tended front and generous rear gardens, off road parking for 2 vehicles, and adjoining garage. EPC=C



Changing Lifestyles

01409 254 238
holsworthy@boproperty.com

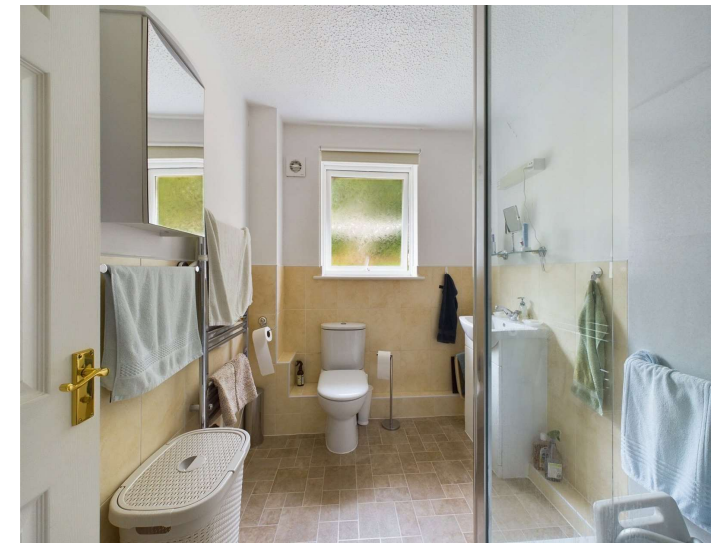


Situation

The village of Black Torrington offers a range of traditional amenities including Primary School, Doctors Surgery with Pharmacy, Popular Local Pub, Village Hall, Playing Fields with multi-purpose play area, and Post Office in the Community Hall on Tuesdays 6pm-7.30pm, and Fridays 1.15pm-2.45pm. Neighbouring villages include Sheepwash, Shebbear, Stibb Cross and Highampton. Hatherleigh is some 6 miles distant and the bustling Market Town of Holsworthy with its comprehensive range of shops and excellent range of amenities including Indoor Heated Swimming Pool, Sports Halls and Schools is 9 miles distant. Black Torrington is surrounded by unspoilt Devon countryside.

Directions

From Holsworthy proceed on the A3072 Hatherleigh road until reaching the left hand turning signed Black Torrington. Follow this road into the village, passing the old Post Office on the left hand side, and following the road down the hill the entrance to The Maltings will be found on the right hand side. Take the next right hand turn and after a short distance, No.4 will be found on the left hand side.



4 The Maltings, Black Torrington, Beaworthy, Devon, EX21 5PR

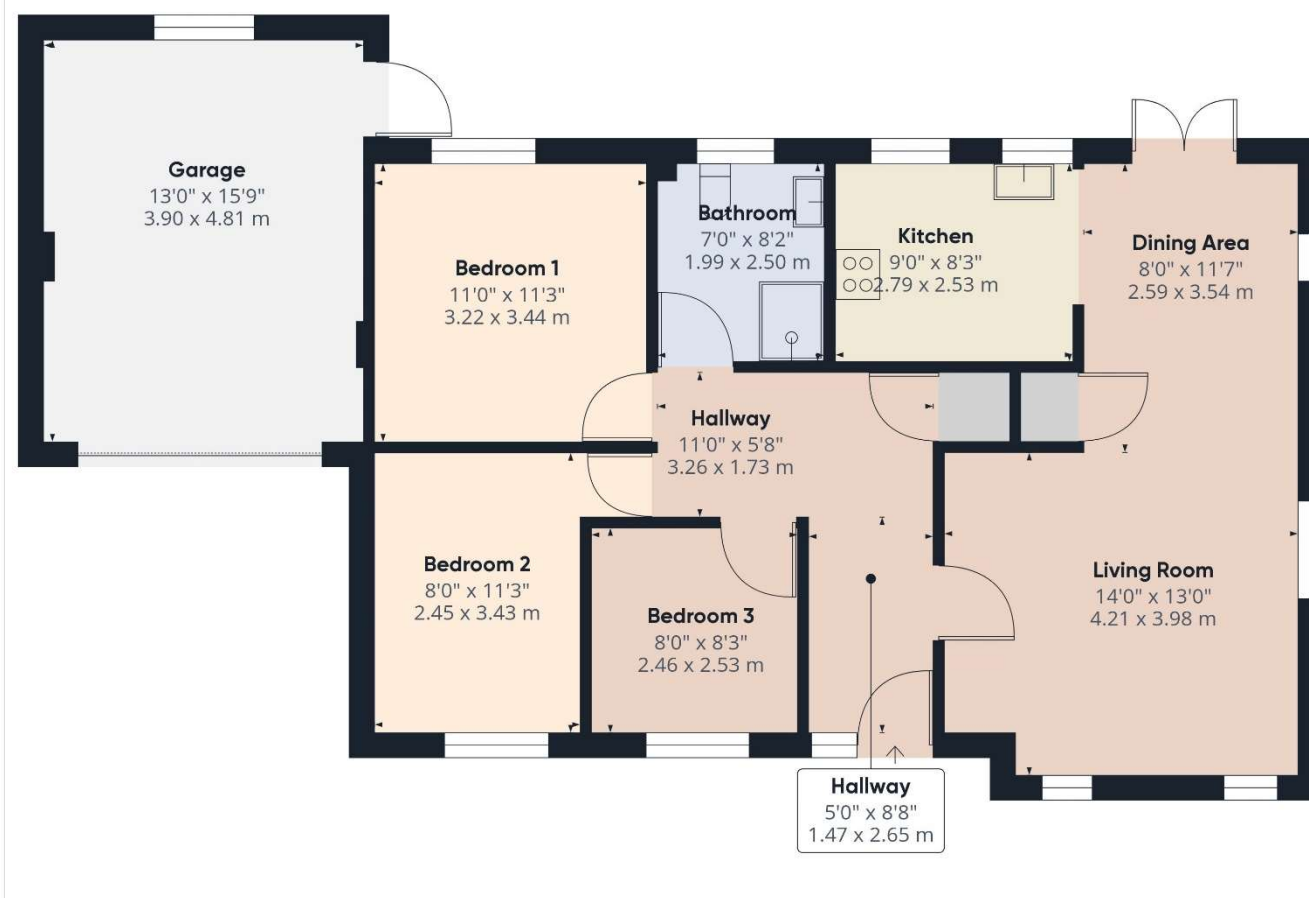


Changing Lifestyles

01409 254 238
holsworthy@bopproperty.com

4 The Maltings, Black Torrington, Beaworthy, Devon, EX21 5PR

Floorplan



We have the facility to refer purchasers and vendors to conveyancing, mortgage advisors and Surveyors. It is your decision if you choose to deal with any of these companies however should you choose to use them we would receive a referral fee from them for recommending you. We will receive a referral fee between £50 - £300 depending on the company & individual circumstances. We have carefully selected these associates for the quality of their work and customer service levels.

Consumer Protection Regulations: We have not tested any apparatus, equipment, fixtures and fittings or services and so cannot verify that they are in working order or fit for the purpose. References to the Tenure of a Property are based on information supplied by the seller. We have not had sight of the Title Documents. A buyer is advised to obtain verification from their solicitor or surveyor. Floorplans shown are for guidance only and should not be relied upon. Items shown in photographs are NOT included unless specifically mentioned within these details. They may however be able by separate negotiation. You are advised to check the availability of this property before travelling any distance to view. Particulars are produced in good faith to the best of our knowledge and are set out as a general guide only.

Changing Lifestyles

01409 254 238
holsworthy@boproperty.com

We are here to help you find and buy your new home...

Albion House
4 High Street
Holsworthy
Devon
EX22 6EL

Tel: 01409 254 238

Email: holsworthy@boproperty.com

Have a property to sell or let?
4 The Maltings, Black Torrington, Beaworthy, Devon, EX21 5PR

If you are considering selling or letting your home,
please contact us today on 01409 254 238 to
speak with one of our expert team who will be able
to provide you with a free valuation of your home.



Please do not hesitate to
contact the team at Bond
Oxborough Phillips Sales &
Lettings on

01409 254 238

for a free conveyancing
quote and mortgage advice.

