



**FOR SALE**

12a Bow Street, Lisburn Co. Antrim BT28 1BN  
028 9266 9030  
[info@taylorpattersonestateagents.com](mailto:info@taylorpattersonestateagents.com)  
[www.taylorpattersonestateagents.com](http://www.taylorpattersonestateagents.com)

**153 Dromara Road, Hillsborough BT26 6QA**

**Offers in the Region of £225,000**



## PROPERTY DESCRIPTION

A detached bungalow enjoying an elevated setting, affording pleasant aspects over open countryside yet only approximately 3 miles from the A1 dual carriageway and Hillsborough Village.

The original three bedroom bungalow has been extended to provide an attached, self-contained section accessed from both its own-door and from the bungalow, This comprises a further Lounge, Kitchen and Bedroom with Ensuite Shower Room.

Depending on the buyer's requirements there is potential to reconfigure the layout and incorporate both areas into one.

**Accommodation comprises in brief:-** Entrance Porch; Entrance Hall; Living Room; Dining Room; Kitchen; 3 Bedrooms; Bathroom; Second Reception Hall; Lounge; Kitchen; Bedroom with Ensuite Shower Room.

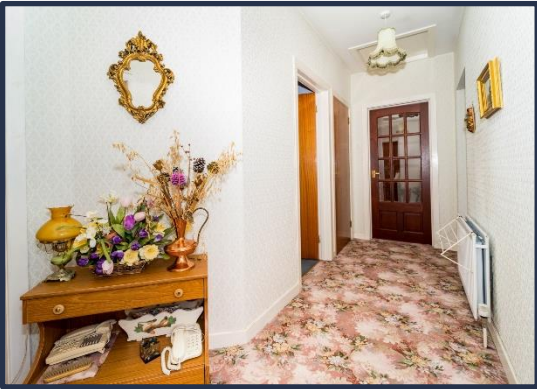
**Specification includes:** Oil fired central heating; uPVC double glazed windows; uPVC fascias.

**Outside:** Parking to sides and rear. Front garden in lawn. Fence and hedge borders.

**LOCATION:** Heading away from Hillsborough on the Dromara Road, number 153 is situated on the left hand side after approximately 2.8 miles.







## ENTRANCE PORCH

uPVC double glazed entrance door.

## ENTRANCE HALL

Glazed entrance door.

## LIVING ROOM

3.72m (12'2") x 3.61m (11'10")  
Tiled fireplace.

## DINING/SITTING ROOM

3.65m (12'0") x 3.14m (10'4")  
Tiled fireplace.

## KITCHEN

3.14m (10'4") x 3.12m (10'3")  
High and low level cupboards. Single drainer stainless steel sink unit with mixer tap. Plumbed for washing machine. Part tiled walls.

## REAR PORCH

uPVC double glazed rear door.

## BEDROOM PASSAGE

## BATHROOM

White suite comprising bath, pedestal wash hand basin and low flush w.c. Part tiled walls. Built-in hotpress.

## BEDROOM 1

3.06m (10'0") x 2.68m (8'10")

## BEDROOM 2

2.07m (6'9") x 2.56m (8'5")

## BEDROOM 3

4.16m (13'8") x 2.57m (8'5")  
Door to Extension`s Reception Hall.

## EXTENSION

## RECEPTION HALL

Glazed entrance door.

## LOUNGE

4.97m (16'4") x 3.66m (12'0")  
Marble fireplace.

## KITCHEN

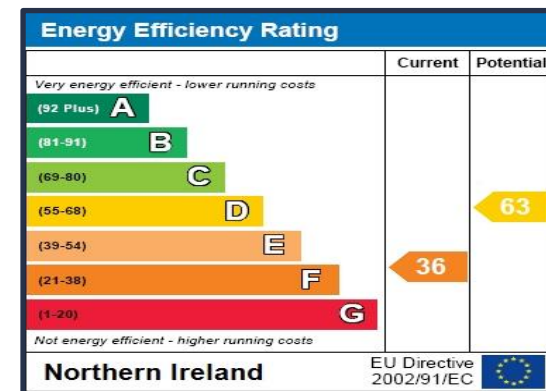
3.06m (10'0") x 3.02m (9'11")  
High and low level cupboards. Single drainer stainless steel sink unit with mixer tap. Plumbed for washing machine. Part tiled walls.

## BEDROOM 4

2.97m (9'9") x 2.09m (6'10")

## ENSUITE SHOWER ROOM

Tiled shower cubicle with electric shower, pedestal wash hand basin and low flush w.c. (Door also from Reception Hall).



12a Bow Street, Lisburn Co. Antrim BT28 1BN  
028 9266 9030  
info@taylorpattersonestateagents.com  
www.taylorpattersonestateagents.com



**FOR SALE**