

'The Boat' Apt 12.1, 47 Queens Square, Belfast, BT1 3FG



PRICE Offers Around £399,950

The Boat is one of Belfast's most iconic landmark buildings. This contemporary spacious apartment comprises three bedrooms, two modern ensembles, luxury bathroom and a stunning lounge with adjoining luxury kitchen. With floor to ceiling glazing throughout and three private balconies the property enjoys magnificent far reaching views over various landmarks including Belfast Harbour Estate & Docks, River Lagan, The Waterfront & Titanic Buildings, Custom House Square and St Annes Cathedral to name a few. With a private underground car park accessed via a car lift this home is arguably one of the City's finest apartments within easy walking distance of the Cathedral quarter. An early viewing is highly recommended. Inviting cash offers only.

>Sales >New Homes >Commercial >Rentals >Mortgages

Antrim
12 Church Street
BT41 4BA
Tel: (028) 9446 6777

Ballyclare
51 Main Street
BT39 9AA
Tel: (028) 9334 0726

Glengormley
9A Ballyclare Road
BT36 5EU
Tel: (028) 9083 0803

- **Superb Contemporary Apartment**
 - **3 Bedrooms**
 - **Two En Suite Shower Rooms**
- **Feature Floor To Ceiling Glazing Throughout**
- **Magnificent Views Across City Centre & Various Landmark Buildings / Three Private Balconies**
 - **Open Plan Living/ Dining/ Kitchen Layout**
- **Underground Car Park With Allocated Space**
 - **Luxury Modern Bathroom Suite**
 - **Gas Central Heating**
 - **Inviting Cash Offers Only**



ACCOMMODATION

COMMUNAL ENTRANCE DOOR

With CCTV video entry system. Secure lift with passcode to 12th floor.

Front door into:-



SPACIOUS ENTRANCE HALL

With quality exposed hardwood flooring extending through to lounge.



OPEN PLAN LOUNGE / DINING WITH ADJOINING KITCHEN 21'3" x 20'4"

At max.

LOUNGE WITH INFORMAL DINING ASPECT

Quality exposed hardwood flooring. Feature Floor to ceiling glazed windows with far reaching views over City including Belfast Harbour, SSE & The Waterfront building. Fully glazed door to Private balcony.



LUXURY 'ERNESTOMEDA' KITCHEN 16'2" x 12'3"

At max. Equipped with a comprehensive range of high and low level matt grey fitted units with contrasting granite work surfaces. Fixed centre island with twin under pot drawers, granite work surface and inlaid 4 ring hob. Overhead extractor fan housed in stainless steel extractor with Glass hood. A host of Integrated 'Miele' appliances including stainless steel eye level oven, microwave, dishwasher and integrated 'AEG' washing machine. Single drainer sink unit with monobloc mixer tap with complementary part tiled walls and splashback. Tiled floor. Feature Floor to ceiling glazed windows with far reaching views over City. Fully glazed door to Private balcony.

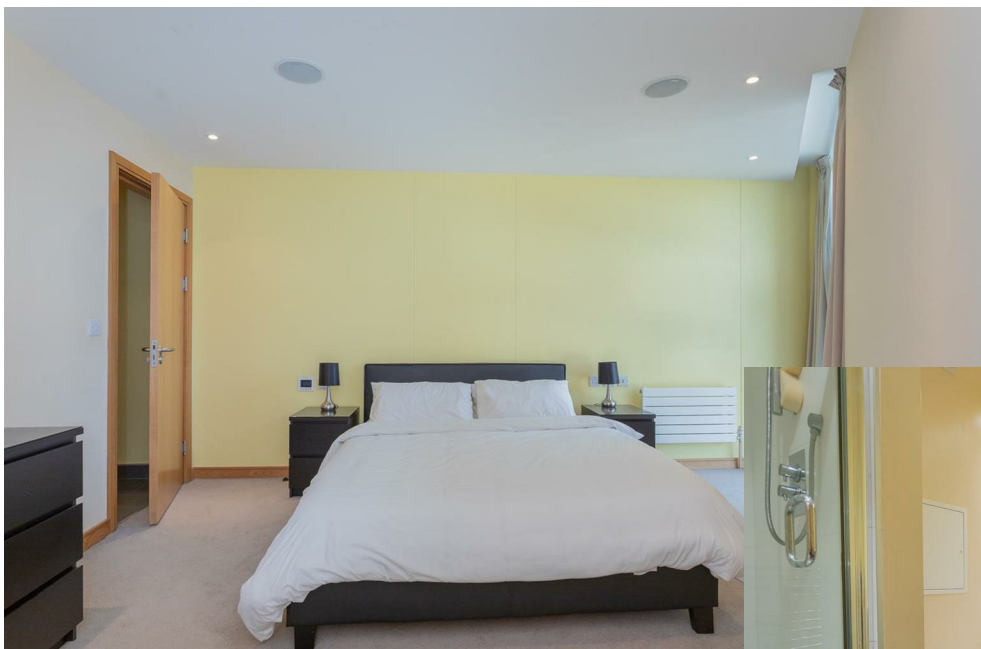


BEDROOM 2 23'11" x 16'11"

At max. Feature Floor to ceiling glazed windows with far reaching views over City.

LUXURY EN SUITE

Contemporary suite comprising modern wall hung wash hand basin with monobloc tap, 'Geberit' wall push w.c. Fitted full width mirror and fully tiled shower enclosure. Recessed low voltage lighting. Tiled floor.



BEDROOM 3 14'6" x 11'5"

Presently used as home office / study. Feature Floor to ceiling dual aspect glazed windows with far reaching views over City including Custom house square, St Annes Cathedral and SSE.



LUXURIOUS BATHROOM

Comprising modern wall hung floating wash hand basin with monobloc tap, recessed mirror with recessed low voltage lighting. 'Geberit' Wall push w.c. Bath with shower attachment. Complementary feature tiled accent with coordinating Tiled floor.



BEDROOM 1 16'8" x 13'1"

Feature Floor to ceiling glazed windows with far reaching views over City including Belfast Harbour & Waterfront building. Fully glazed door to Private balcony.

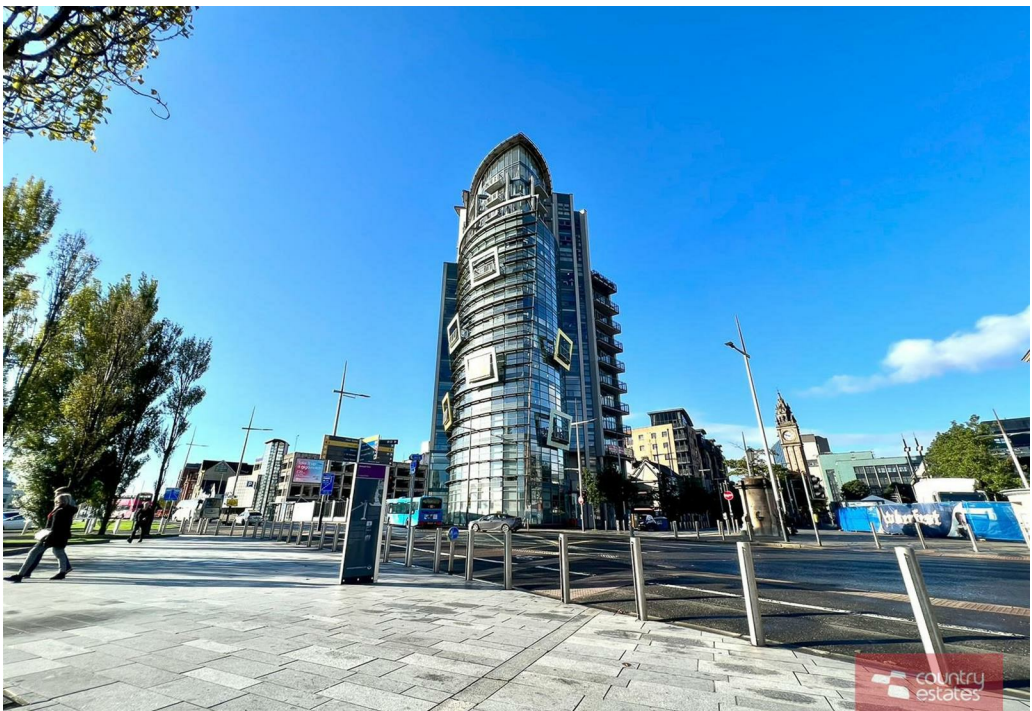
LUXURY EN SUITE

Contemporary suite comprising of modern wall hung wash hand basin with monobloc tap. 'Geberit' Wall push w.c and fitted full width mirror with low voltage lighting. Fully tiled shower enclosure and tiled floor.

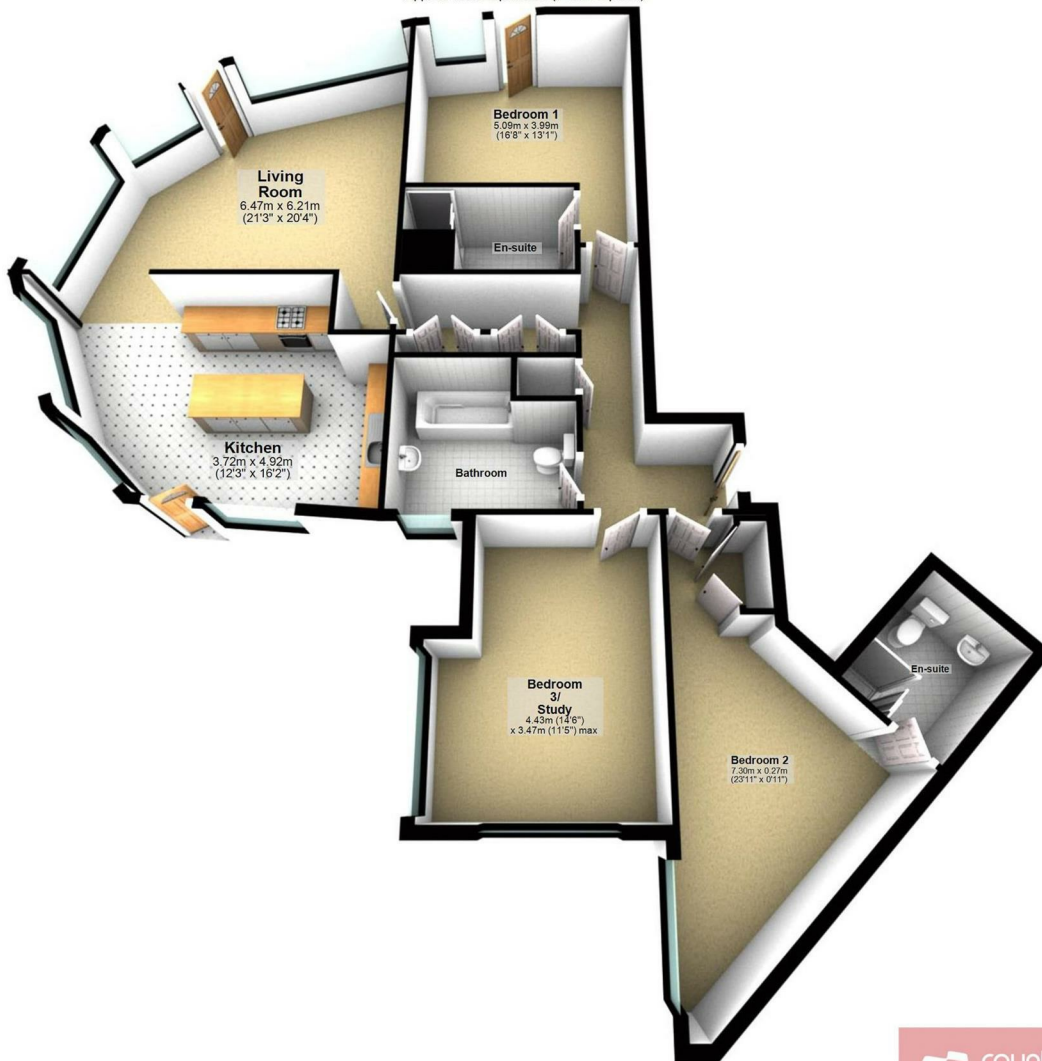


OUTSIDE

Secure communal entrance door with CCTV video entry to lobby area secure lift with passcode to apartment. Car lift to under ground car park with allocated private parking space (No 6).



12th Floor Apartment
Approx. 120.7 sq. metres (1299.4 sq. feet)



Photography and Floor plans by housefylni.co.uk #flyonthewallpropertymarketing
Plan produced using PlanUp.



12.1 49 Queens Square, Belfast

Energy Efficiency Rating		
	Current	Potential
<i>Very energy efficient - lower running costs</i>		
(92 plus) A		
(81-91) B	83	84
(69-80) C		
(55-68) D		
(39-54) E		
(21-38) F		
(1-20) G		
<i>Not energy efficient - higher running costs</i>		
Northern Ireland	EU Directive 2002/91/EC	

**IMPORTANT NOTE TO ALL PURCHASERS:
We have not tested any of the systems or appliances at this property.**

Country Estates (N.I.) Ltd. for themselves and the Vendors of this property whose agents are, give notice that:

These particulars do not constitute any part of an offer or contract

All statements contained in these particulars as to this property are made without responsibility on the part of Country Estates (N.I.) Ltd. or the vendor

None of the statements contained in these particulars as to this property are to be relied on as statements or representations of fact

Any intending purchaser must satisfy himself or otherwise as to the correctness of the statement contained in these particulars

The vendor does not make or give, and neither Country Estates (N.I.) Ltd. nor any person in their employment, has any authority to make or give representation or warranty whatever in relation to this property.

