



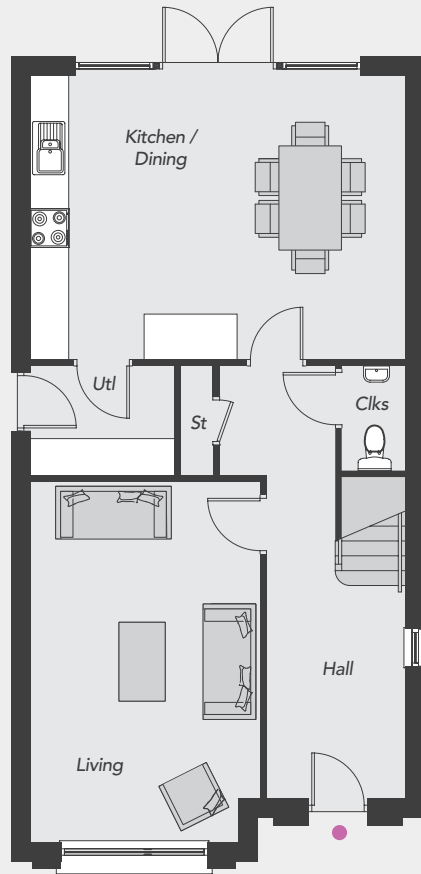
The Bowmead

Total Floor Area: 1,445 sq ft approx.

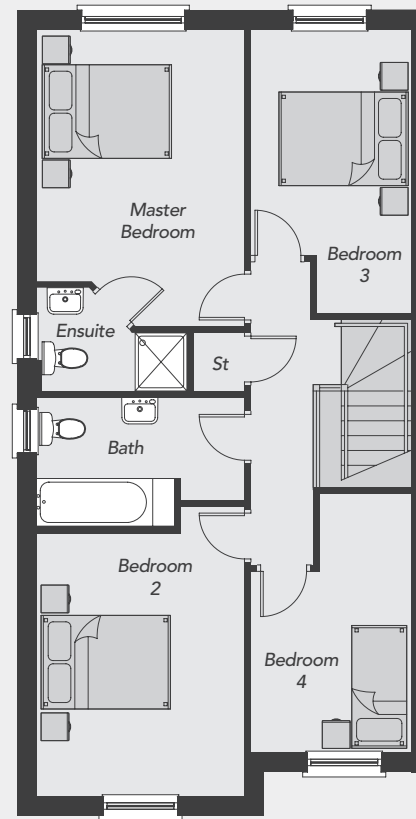


Visit us online at; www.drumnagoonpark.co.uk

GROUND FLOOR



FIRST FLOOR



The Bowmead

GROUND FLOOR

Entrance Hall	
Living Max	18'3" x 11'7"
Kitchen/Dining	19'0" x 14'5"
Utility Area	6'10" x 5'6"
Cloakroom	5'4" x 3'2"

FIRST FLOOR

Master Bedroom Max	15'1" x 10'6"
Ensuite Max	7'7" x 5'2"
Bedroom 2	13'4" x 10'6"
Bedroom 3 Max	14'5" x 8'1"
Bedroom 4	9'0" x 8'1"
Bathroom Max	10'6" x 6'6"

Total Floor Area
1,445 sq ft approx.



All dimensions are approximate and 3D computer generated images are for illustration purposes only, both of which may be subject to change.