



64 Hydepark Manor, Newtownabbey, BT36 4PB

£1,100 Per Month



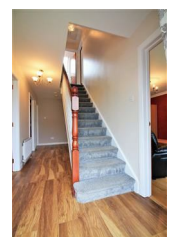
Immaculately presented, deceptively spacious, detached family home with matching detached garage, occupying a generous sized site, conveniently located within the well sought after Hydepark Manor development, off Hydepark Road, Newtownabbey.

Offering adaptable accommodation, the property comprises entrance hall, lounge, family room/bedroom four, kitchen with informal dining area, separate utility room, three well proportioned bedrooms, fully tiled bathroom with three piece suite, and separate shower room to first floor level.

Externally the property enjoys generous sized driveway finished in stone, matching detached garage, and large rear garden finished mainly in lawn.

Other attributes include gas fired central heating, PVC double glazing and convenient location.

Early viewing is strongly recommended to avoid disappointment.



INVESTORS IN PEOPLE
We invest in people Gold

PRS Property Redress Scheme

Proudly sponsoring



Awards



WE ARE MACMILLAN.
CANCER SUPPORT