

5 Forthaven, Ballyclare, BT39 9GU



PRICE Offers Around £339,950

This spacious, well presented detached property is located in the ever popular Forthaven Development, Ballyrobert. Sitting on a corner site, with views over the surrounding countryside to the front, the property is within walking distance to the village, benefitting from a range of amenities including shops, leisure facilities, schools and local transport networks to Belfast City Centre. The property further benefits from being minutes drive away from Ballyclare & Glengormley respectively. An ideal purchase for a young or established family.

Internally the property comprises an entrance hall, three reception rooms, kitchen with informal dining area, utility room, four well proportioned bedrooms, one with en-suite and family bathroom.

Externally the property consists of gardens front and rear, private driveway and an extended detached garage with home office to the rear.

Early viewings highly recommended.

>Sales >New Homes >Commercial >Rentals >Mortgages

Antrim
12 Church Street
BT41 4BA
Tel: (028) 9446 6777

Ballyclare
51 Main Street
BT39 9AA
Tel: (028) 9334 0726

Glengormley
9A Ballyclare Road
BT36 5EU
Tel: (028) 9083 0803



- **Spacious Detached Residence**
- **Four Bedrooms; One With En-Suite**
 - **Three Reception Rooms**
 - **Kitchen With Informal Dining Area**
 - **Utility Room**
 - **Family Bathroom**
- **Detached Garage With Home Office; Private Driveway**
- **Private Garden With Two Patio Areas**
 - **Sought After Development**
 - **Convenient Location**

ACCOMMODATION

GROUND FLOOR

ENTRANCE HALL

Hardwood front door with matching double glazed side screens. Stairwell to first floor. Access to store. Tiled floor.



LIVING ROOM 16'1" x 12'7"

Focal point open fire with pine surround on granite tiled hearth. Twin windows to front elevation. Wood laminate floor covering.

DINING ROOM 14'4" x 11'11"

Wood laminate floor covering.



FAMILY ROOM/ SNUG 11'11" x 12'7"

Wood laminate floor covering. Twin windows to front elevation.



KITCHEN WITH INFORMAL DINING AREA 15'3" x 19'5"

Modern fitted shaker style kitchen with high and low level storage units and contrasting granite work surfaces. Integrated appliances to include Bosch 5 ring gas hob and Zanuzzi oven with stainless steel extractor canopy over and dishwasher. Space for American style fridge freezer. Inlaid stainless steel sink unit. Matching island unit with breakfast bar. Wine rack. Glazed display cabinets. PVC double glazed French doors to rear garden. Tiled floor.



UTILITY ROOM

Matching high and low level units to kitchen. Melamine work surfaces. Stainless steel sink unit with drainer bay. PVC double glazed back door. Space for washing machine and tumble dryer. Tiled floor.

FIRST FLOOR

LANDING

Access to roof space and shelved hot press.

BEDROOM 1 16'1" x 12'6"

Wood laminate floor covering.

EN SUITE

Modern fitted three piece suite comprising shower cubicle with Drench shower head and mains shower over, semi pedestal wash hand basin and w.c. Chrome towel radiator. Panelled walls to shower and tiled floor.

BEDROOM 2 11'11" x 12'7"

Wood laminate floor covering. Twin windows to front elevation.



BEDROOM 3 14'5" x 12'6"

Wood laminate floor covering.

BEDROOM 4 11'3" x 10'1"

Wood laminate floor covering.



FAMILY BATHROOM

Modern fitted four piece suite comprising free standing bath, shower cubicle with mains shower over, semi pedestal wash hand basin and w.c. Chrome towel radiator. Panelled walls to shower. Part tiled walls and tiled floor.



EXTERNAL

Front garden finished in array of trees and shrubs.
Private driveway finished in decorative stone.
Rear garden finished in lawn with paved patio area and separate stoned patio area.
Range of flower beds finished in array of plants, trees and shrubs.
Outside tap and light.
PVC fascia and rainwater goods.

DETACHED GARAGE 14'1" x 10'2"

Up and over door. Separate service door. Oil fired central heating boiler. Power and light.

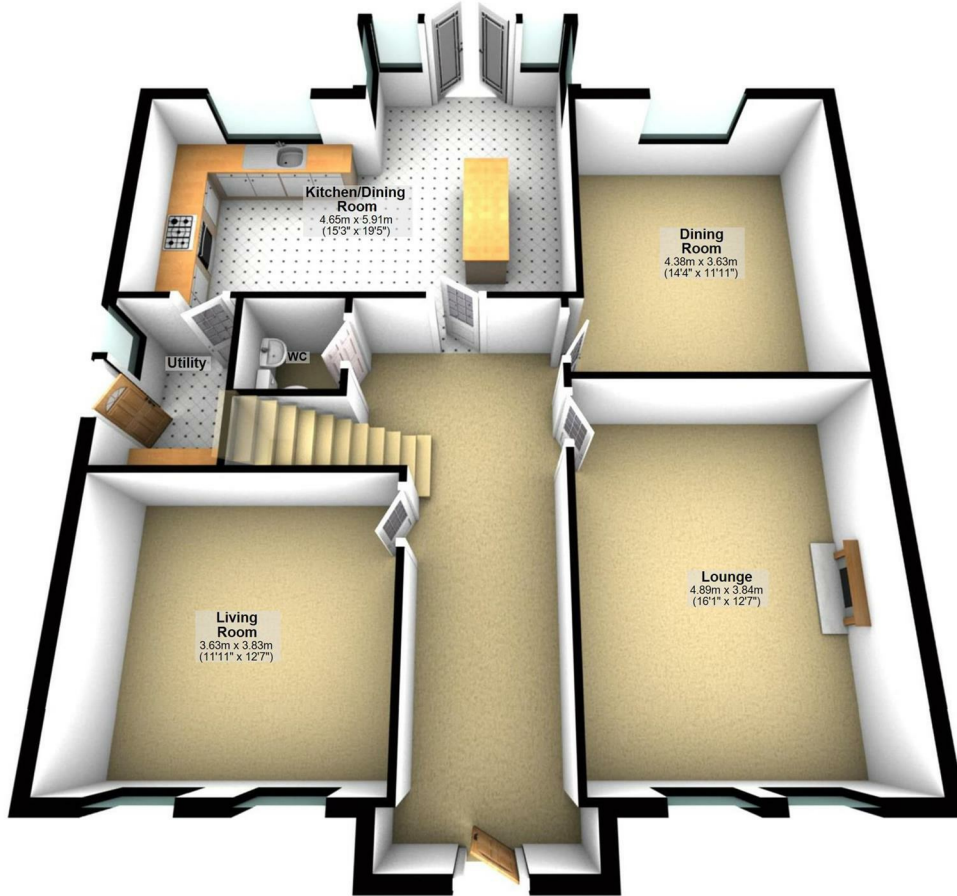
GAMES ROOM/ STUDY 7'3" x 10'2"

Accessed from main garage. Exposed brick walls. Wood laminate floor covering. Power, lighting and heating.
Recessed downlighting.



Ground Floor

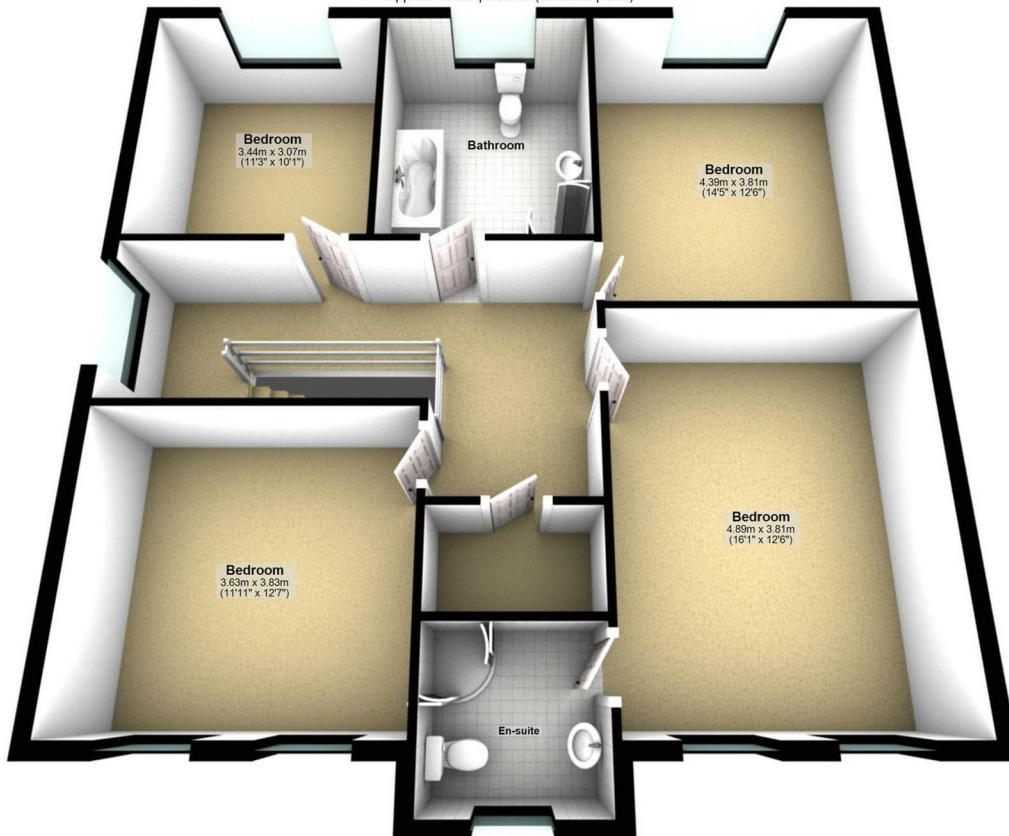
Approx. 97.2 sq. metres (1046.7 sq. feet)



Photography and Floor plans by houseflyni.co.uk #flyonthewallpropertymarketing
Plan produced using PlanUp.

First Floor

Approx. 93.6 sq. metres (1007.4 sq. feet)





| Energy Efficiency Rating | | |
|---|----------------------------|-----------|
| | Current | Potential |
| Very energy efficient - lower running costs | | |
| (92 plus) A | | |
| (81-91) B | | |
| (69-80) C | | |
| (55-68) D | 64 | 67 |
| (39-54) E | | |
| (21-38) F | | |
| (1-20) G | | |
| Not energy efficient - higher running costs | | |
| Northern Ireland | EU Directive 2002/91/EC | |

**IMPORTANT NOTE TO ALL PURCHASERS:
We have not tested any of the systems or appliances at this property.**



You Talk. We Listen.

T: 028 9318 0002

Fiona.hannah@themortgageshop.net

Relying on a mortgage to finance your new home?

If so, then talk with Fiona Hannah at The Mortgage Shop Ballyclare. This is a free, no obligation service, so why not contact us and make the most of a specialist whole of market mortgage broker with access to over 3,000 mortgages from 50 lenders by talking to one person. You Talk. We Listen. Your home may be repossessed if you do not keep up with repayments on your mortgage.

Country Estates (N.I.) Ltd. for themselves and the Vendors of this property whose agents are, give notice that:

These particulars do not constitute any part of an offer or contract

All statements contained in these particulars as to this property are made without responsibility on the part of Country Estates (N.I.) Ltd. or the vendor

None of the statements contained in these particulars as to this property are to be relied on as statements or representations of fact

Any intending purchaser must satisfy himself or otherwise as to the correctness of the statement contained in these particulars

The vendor does not make or give, and neither Country Estates (N.I.) Ltd. nor any person in their employment, has any authority to make or give representation or warranty whatever in relation to this property.

