

THE FINNIS & THE GRANSHA

Number 6 - Total Floor Area: 1,025 sq. ft. approx. & Number 8 - Total Floor Area: 1,261 sq. ft. approx.



THE
GRANSHA
NO. 8

THE
FINNIS
NO. 6

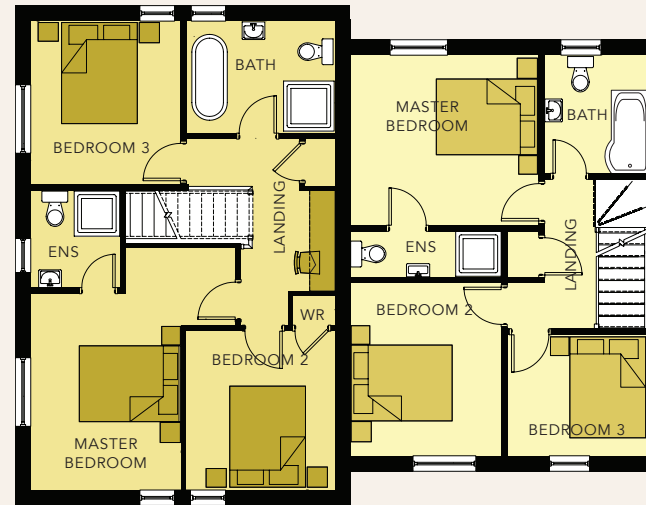
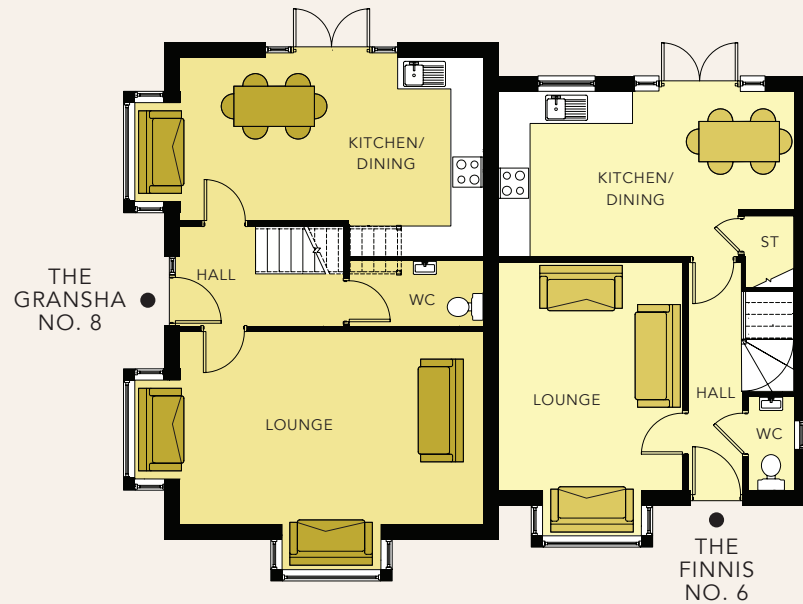
THE FINNIS & THE GRANSHA

Number 6 - Total Floor Area: 1,025 sq. ft. approx.
 Number 8 - Total Floor Area: 1,261 sq. ft. approx.



GROUND FLOOR

FIRST FLOOR



Computer Visual.

GROUND FLOOR - THE GRANSHA

ENTRANCE HALL	
LOUNGE (PLUS BAYS)	19'9" x 12'8"
KITCHEN / DINING (PLUS BAY)	19'9" x 13'0"
WC	8'9" x 4'3"

FIRST FLOOR - THE GRANSHA

MASTER BEDROOM (MAX)	16'1" x 9'9"
ENSUITE	6'4" x 5'10"
BEDROOM 2	10'8" x 9'9"
BEDROOM 3	10'4" x 9'8"
BATHROOM	9'8" x 9'4"

GROUND FLOOR - THE FINNIS

ENTRANCE HALL	
LOUNGE (PLUS BAY)	14'11" x 12'11"
KITCHEN / DINING (MAX)	19'3" x 10'10"
STORE	
WC	6'1" x 3'0"

FIRST FLOOR - THE FINNIS

MASTER BEDROOM	12'3" x 11'1"
ENSUITE	9'10" x 3'0"
BEDROOM 2	11'3" x 9'10"
BEDROOM 3	9'2" x 7'11"
BATHROOM	7'4" x 6'9"