

# THE DONARD

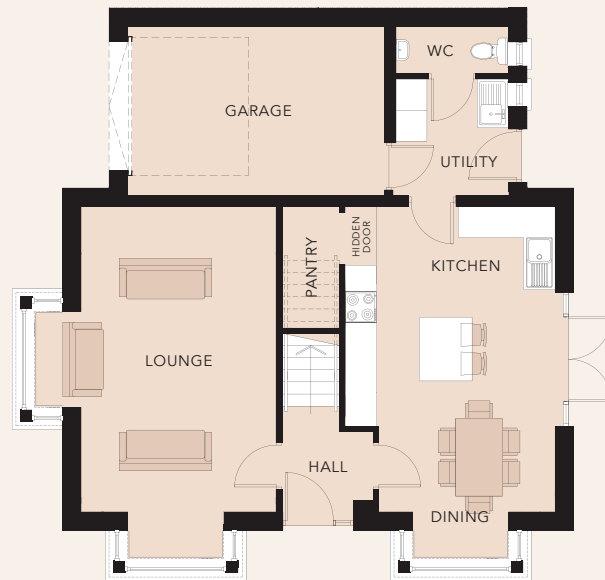
*Number 9b - Total Floor Area: 1,794 sq. ft. approx. including Garage*



# THE DONARD

Number 9b - Total Floor Area: 1,794 sq. ft. approx. including Garage

GROUND FLOOR



FIRST FLOOR



Computer Visual.

## GROUND FLOOR

ENTRANCE HALL	
LOUNGE (PLUS BAYS)	19'4" x 12'4"
KITCHEN / DINING (MAX, PLUS BAY)	19'4" x 13'3"
UTILITY	7'4" x 7'1"
WC	7'1" x 2'11"
GARAGE	16'5" x 10'8"

## FIRST FLOOR

MASTER BEDROOM (MAX)	19'4" x 12'4"
ENSUITE (MAX)	7'6" x 5'9"
BEDROOM 2 (MAX)	11'4" x 10'8"
BEDROOM 3	13'3" x 9'6"
BEDROOM 4	9'10" x 9'8"
BATHROOM	10'8" x 8'11"

