

Development Opportunity
3 Site's (2 Semi's & 1 Detached)

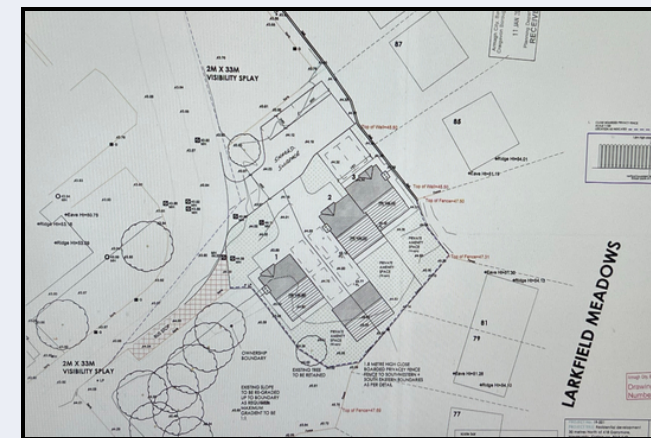
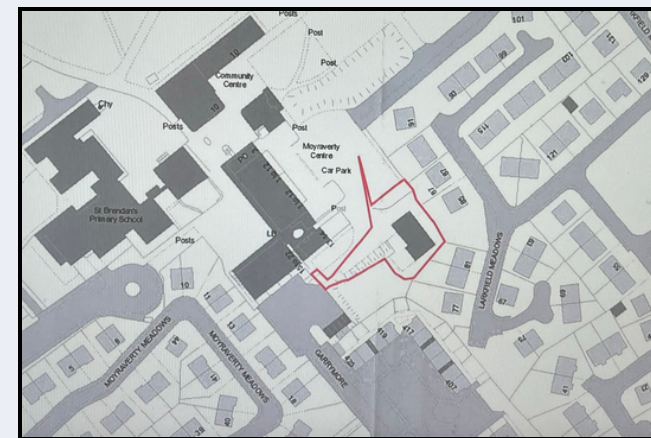
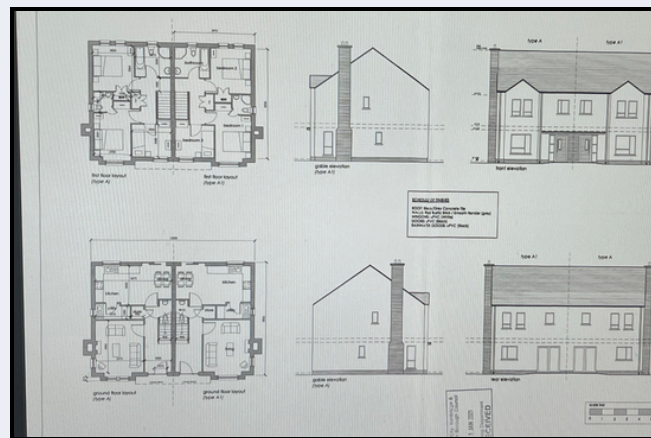
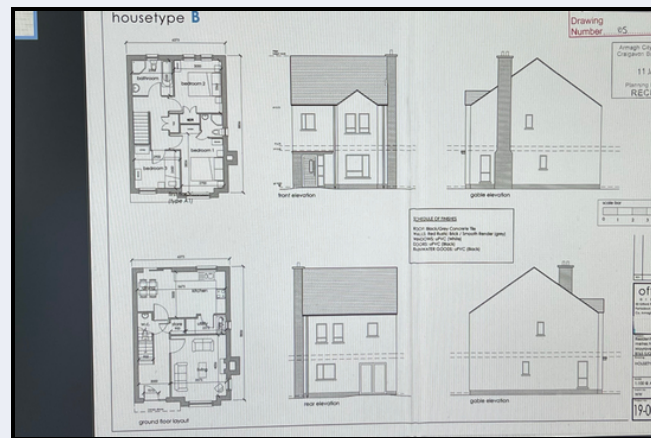


3 Sites 30m North of Garrymore, Portadown, BT65 5JQ

- Passed for three sites
- Passed on 3rd September 2021
- Planning Ref LA08/2019/0365/F
- Ideal for builder /developer
- Additional site in Larkfield Manor maybe available

PRICE GUIDE £99,500

These details do not constitute any part of an offer or contract. None of the statements contained in this sales brochure are to be relied on as statements or representations of fact and any intending purchaser must satisfy themselves by inspection or otherwise as to their correctness. The vendor does not make or give, and neither Alastair Stevenson the Property Spot nor any person in its employment has any authority to make or give any representation or warranty whatsoever in relation to this property. All dimensions are approximate and are taken at widest points



These 3 sites should appeal to a builder seeking to build a small development , in the Craigavon area. There is planning permission passed for 3 dwellings, two semi's and one detached. There is currently a fourth site, being marketed separately, it is located at the rear of these 3 sites and is accessed via Larkfield Meadows.