



ESTATE AGENTS

AUCTIONEERS

VALUERS



## **35 Harbour Road BALLINTOY, BT54 6NA**

Ballintoy village on the North Antrim Coast is a spectacular setting with some of the most superb views across the North Antrim coastline overlooking Rathlin Island towards the Giants Causeway and the Mull of Kintyre. Having recently shot to fame for filming locations for Game of Thrones, the infamous harbour offers a tranquil setting with some beautiful beaches.

The subject site has planning approval for a detached dwelling designed by Michael Colwell Architects with superb bright and airy accommodation while making the most of the stunning views with floor to ceiling windows and raised terrace overlooking the most spectacular panoramic views. Planning approval was granted in 5th May 2022 under planning reference LA01/2020/0768/F. The approved dwelling measures c. 2500 sq.ft. The current owner has also had working drawings produced and approved by building control.

**PRICE: Asking Price £275,000**

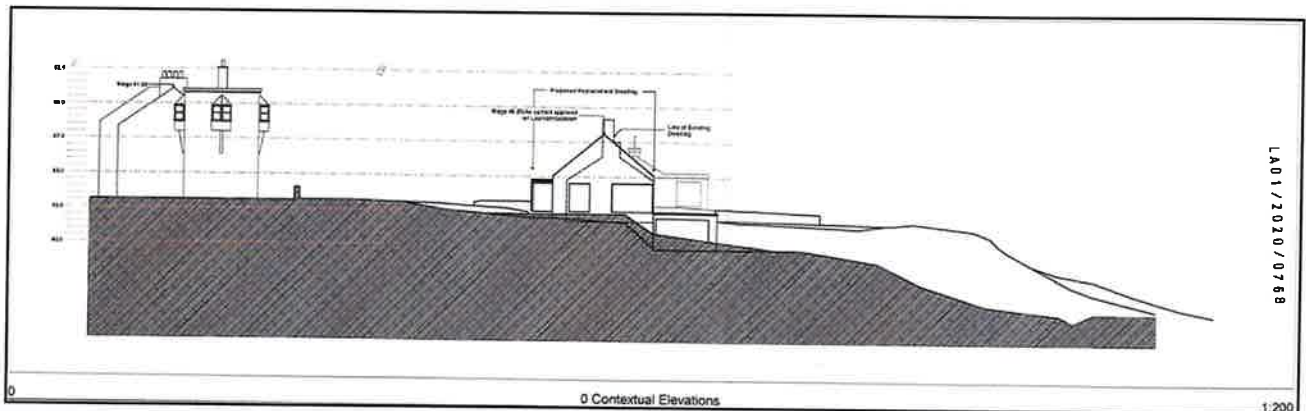
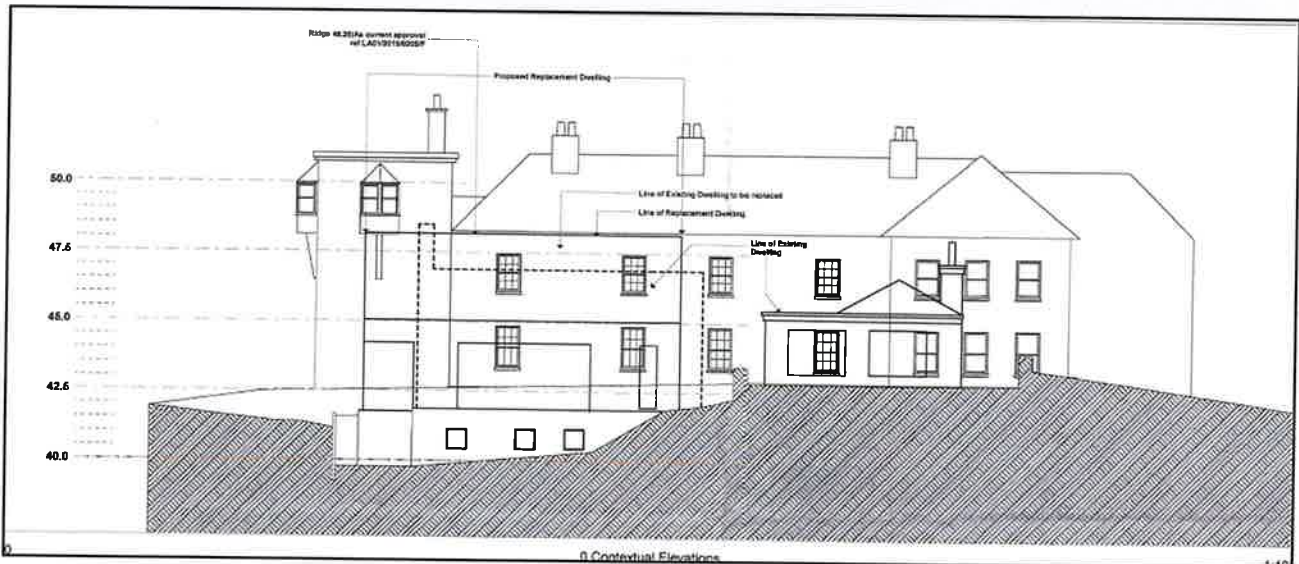
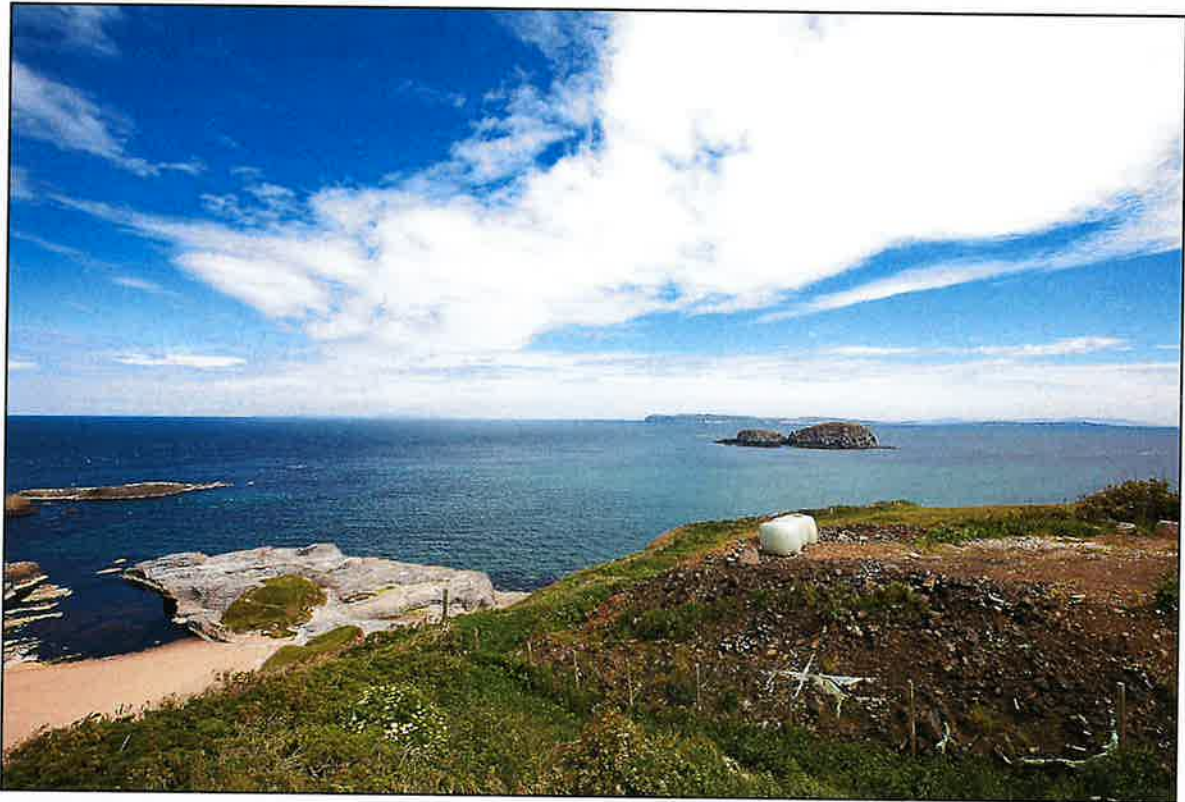
**BY APPOINTMENT THROUGH AGENT**

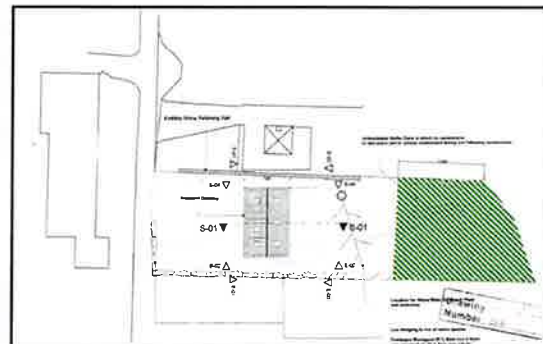
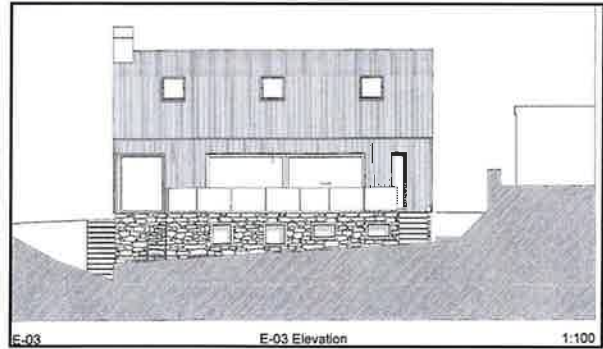
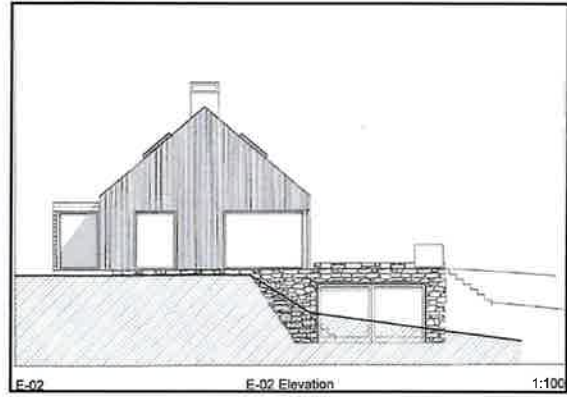
**13 Ann Street , Ballycastle, Co. Antrim, BT54 6AA**

**Tel: 028 207 62353/62082 Fax: 028 207 62126**

**email: [property@pjmcilroy.co.uk](mailto:property@pjmcilroy.co.uk) web: [www.pjmcilroy.com](http://www.pjmcilroy.com)**

The elevated site is accessed off the Harbour Road along a shared laneway and is convenient to the famous Carrick-a-Rede Rope Bridge, Bushmills and Ballycastle. The specific site could be started tomorrow.





## Exterior:



### **Viewing**

Please ring us to make an appointment. We are open from 9 am to 5 pm Monday to Friday, 10 am to 12 Noon on Saturdays.

### **Mortgage Information**

We are Independent Financial Advisers and offer a fully independent financial advice service. Please ring us to discuss your requirements.

Email: [property@pjmcilroy.co.uk](mailto:property@pjmcilroy.co.uk)

Website: [www.pjmcilroy.com](http://www.pjmcilroy.com)

# **Mcilroy**

**PJ** **& son**