

## 64 Ballybentragh Road, Dunadry, Antrim, County Antrim, BT41 2HJ



**PRICE Offers Over £349,950**

This is an excellent opportunity for those looking for a detached bungalow on a generous site with excellent sun orientation and superb, elevated views over the Six Mile Water and open countryside beyond.

Located in the exclusive Dunadry area and within easy walking distance of Dunadry Hotel and Spa, Ellie May's public house and restaurant and bus connections to Belfast and the North this deceptively spacious four bedroom property combines excellent accommodation with amazing outdoor space ideally suited to both recreational use and for those requiring additional space to park vehicles or create storage. Perfectly positioned for easy commuting to Belfast City centre or those regularly using the International Airport, this property will appeal to a wide range of discerning purchasers.

Early viewing strongly recommended.

**>Sales >New Homes >Commercial >Rentals >Mortgages**

Antrim  
12 Church Street  
BT41 4BA  
Tel: (028) 9446 6777

Ballyclare  
51 Main Street  
BT39 9AA  
Tel: (028) 9334 0726

Glengormley  
9A Ballyclare Road  
BT36 5EU  
Tel: (028) 9083 0803



## FEATURES

- Entrance foyer with glazed door and sidelights to spacious Entrance Hall
- Lounge 17'3 x 15'8 with bay window, and open fire with feature stone surround
- Open plan kitchen with informal living and dining area
- Full range of light oak high and low level units / Integrated fridge, freezer and dishwasher
- Utility room with range of low level units
- Four well proportioned bedrooms / Two with built-in wardrobes and one with integrated shower cubicle
- Bathroom with original suite to include panel bath with electric shower unit over
- Mahogany double glazed windows / Oil-fired central heating / PVC fascia and soffits
- Large site with well maintained lawns to front and large yard and garden area to rear / Timber shed 21'8 x 13'1 (to include W/C)
- Superb location with excellent sun orientation and elevated views over the Six Mile Water and open countryside beyond

## ACCOMMODATION

Hardwood double glazed entrance door and sidelights to;

### ENTRANCE FOYER

Single glazed door and side light to;

### ENTRANCE HALL

Wood laminate floor. Wood strip ceiling. Double radiator. Cloaks Cupboard and separate storage cupboard. Access to loft. Hot-press with copper cylinder.

### LOUNGE

**17'3 x 15'8 (5.26m x 4.78m)**

(into bay window) Dual aspect windows. Open fire with feature stone surround. Double radiator. 15 pane glazed door to;

### OPEN PLAN KITCHEN, LIVING AND DINING AREA

**24'6 x 14'3 (7.47m x 4.34m)**

Full range of light oak high and low level units with open display and contrasting work surfaces. Single drainer stainless steel sink unit and mixer taps. Space for cooker with over head extractor fan. Integrated fridge freezer and dishwasher. Part tiled walls to work surfaces. Wood laminate floor. Dual aspect windows to dining area. Double radiator.

### UTILITY

**9'2 x 6'2 (2.79m x 1.88m)**

Single drainer stainless steel sink unit. Low level storage cupboards. Oil fired boiler. Plumbed for washing machine. Fully tiled floor. Hard wood double glazed door to rear.

### **BEDROOM 1**

14'10 x 11'8 (4.52m x 3.56m)

Full range of built-in wardrobes with matching bedside cabinets and vanity unit. Dual aspect windows. Single radiator.

### **BEDROOM 2**

11'9 x 11'4 (3.58m x 3.45m)

Range of built-in wardrobes with overhead lockers. Door to integrated shower cubicle with fully tiled walls and thermostatic shower unit. Single radiator.

### **BEDROOM 3**

11'5 x 10'1 (3.48m x 3.07m)

Single radiator.

### **BEDROOM 4 / DINING ROOM**

11'5 x 9'10 (3.48m x 3.00m)

Wood laminate floor. Single radiator.

### **BATHROOM**

7'8 x 7'5 (2.34m x 2.26m)

(max) Original orange coloured suite comprising panelled bath with "Mira" electric shower over, low flush W/C and wash hand basin in vanity unit. Fully tiled walls. Heated towel rail.

### **OUTSIDE**

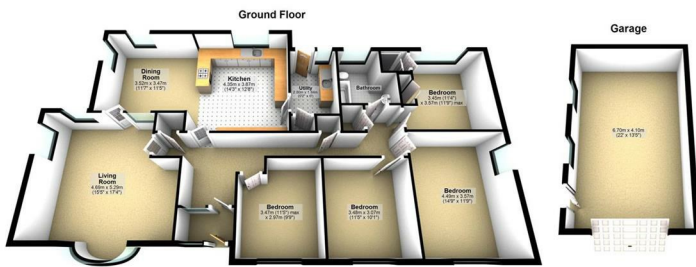
Timber entrance gates to tarmac drive to front and side. Large garden to front in neat lawn. Mature trees and shrubs.

Large double gates to tarmac and stoned drive accessing large rear yard with views over the Six Mile Water. Pave patio. Steps up to tarmac pathway. Garden in lawn and mature borders. Pink stone display. PVC tank. Timber Shed 21'8 x 13'1. (Including W/C) Up and over door. Power and light. Timber double gates to side of property with access to the front.

### **IMPORTANT NOTE TO ALL POTENTIAL PURCHASERS;**

Please note, none of the services or appliances have been tested at this property.





Photography and Floor plans by housefind.co.uk #yourbestpropertymarketing  
Plan produced using Planit.



### Energy Efficiency Rating

	Current	Potential
Very energy efficient - lower running costs		
(92 plus) <b>A</b>		
(81-91) <b>B</b>		
(69-80) <b>C</b>		<b>68</b>
(55-68) <b>D</b>	<b>45</b>	
(39-54) <b>E</b>		
(21-38) <b>F</b>		
(1-20) <b>G</b>		
Not energy efficient - higher running costs		
<b>Northern Ireland</b>	EU Directive 2002/91/EC	



Mortgage **IQ**

Talk to one of our advisers today

12 Church Street, Antrim, Co. Antrim, BT41 4BA  
**T:** 028 9417 0000  
**E:** antrim@mortgageIQ.co.uk

IQ

WE KNOW WHAT IT TAKES

Country Estates (N.I) Ltd. for themselves and the Vendors of this property whose agents are, give notice that:  
 These particulars do not constitute any part of an offer or contract

All statements contained in these particulars as to this property are made without responsibility on the part of Country Estates (N.I) Ltd. or the vendor  
 None of the statements contained in these particulars as to this property are to be relied on as statements or representations of fact  
 Any intending purchaser must satisfy himself or otherwise as to the correctness of the statement contained in these particulars  
 The vendor does not make or give, and neither Country Estates (N.I) Ltd. nor any person in their employment, has any authority to make or give representation or warranty whatever in relation to this property.

