



# *The Peston*

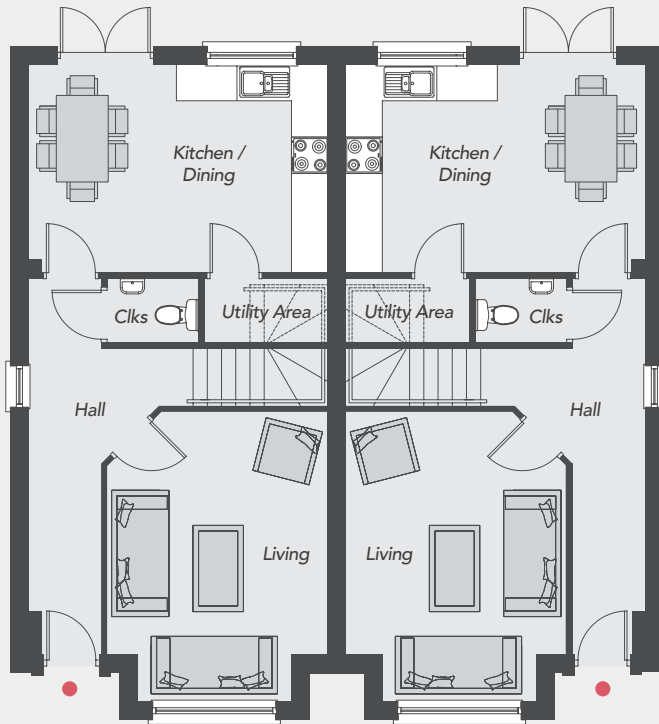
Total Floor Area: 1075 sq ft approx.



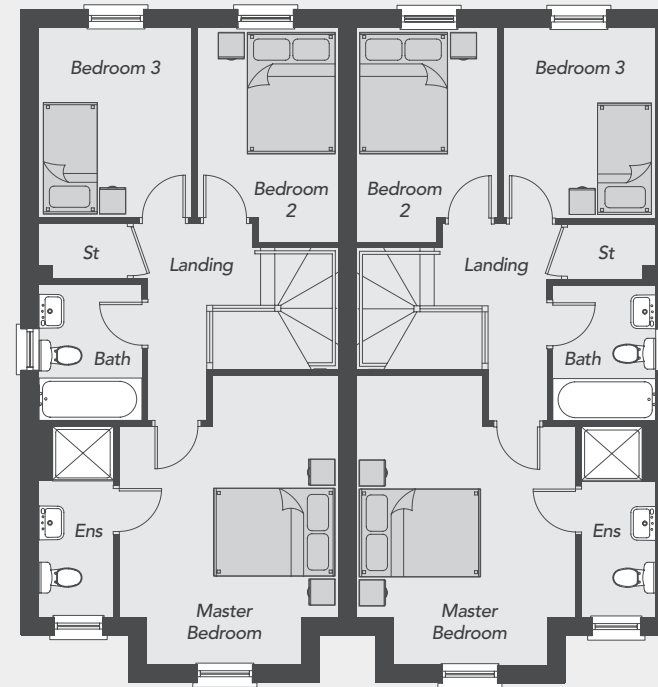
**Drumnagoon  
Park**  
DRUMNAGOON ROAD  
CRAIGAVON

Visit us online at: [www.drumnagoonpark.co.uk](http://www.drumnagoonpark.co.uk)

## GROUND FLOOR



## FIRST FLOOR



# The Peston

### GROUND FLOOR

Entrance Hall	
Living <i>Max, Plus Bay</i>	13'1" x 11'11"
Kitchen/Dining	16'2" x 11'3"
Utility Area	6'8" x 3'5"
Cloakroom	4'11" x 3'5"

### FIRST FLOOR

Master Bedroom <i>Max</i>	15'8" x 11'10"
Ensuite	10'3" x 4'0"
Bedroom 2 <i>Max</i>	11'7" x 7'7"
Bedroom 3	10'3" x 8'3"
Bathroom	7'4" x 5'6"

**Total Floor Area**  
1075 sq ft approx.



All dimensions are approximate and 3D computer generated images are for illustration purposes only, both of which may be subject to change.