



The Peston

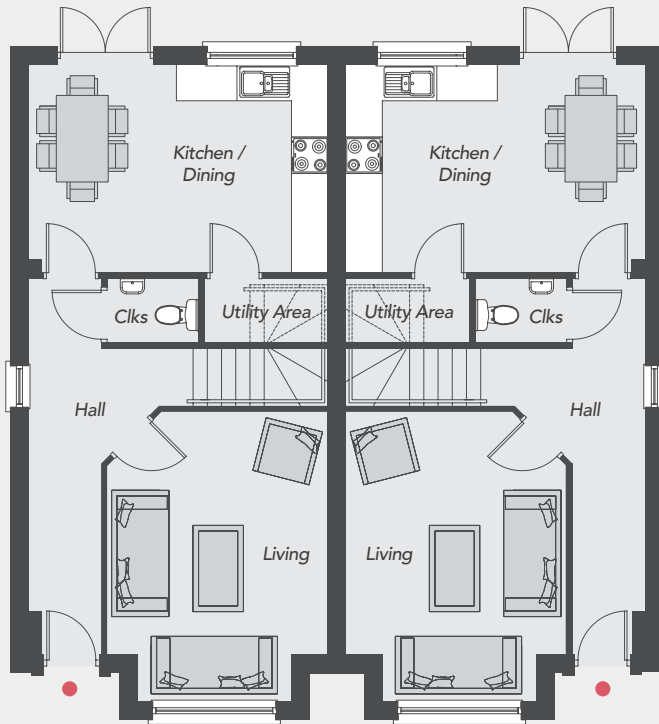
Total Floor Area: 1075 sq ft approx.



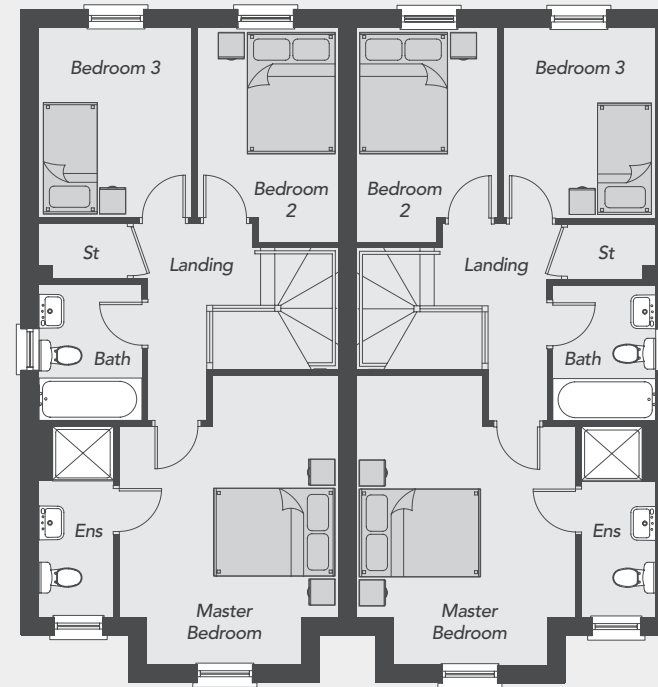
**Drumnagoon
Park**
DRUMNAGOON ROAD
CRAIGAVON

Visit us online at: www.drumnagoonpark.co.uk

GROUND FLOOR



FIRST FLOOR



The Peston

GROUND FLOOR

Entrance Hall	
Living <i>Max, Plus Bay</i>	13'1" x 11'11"
Kitchen/Dining	16'2" x 11'3"
Utility Area	6'8" x 3'5"
Cloakroom	4'11" x 3'5"

FIRST FLOOR

Master Bedroom <i>Max</i>	15'8" x 11'10"
Ensuite	10'3" x 4'0"
Bedroom 2 <i>Max</i>	11'7" x 7'7"
Bedroom 3	10'3" x 8'3"
Bathroom	7'4" x 5'6"

Total Floor Area
1075 sq ft approx.



All dimensions are approximate and 3D computer generated images are for illustration purposes only, both of which may be subject to change.