



**FOR SALE**

12a Bow Street, Lisburn, BT28 1BN  
028 9266 9030  
[info@taylorpattersonestateagents.com](mailto:info@taylorpattersonestateagents.com)  
[www.taylorpattersonestateagents.com](http://www.taylorpattersonestateagents.com)

**28 Hillsborough Old Road, Lisburn**

**Offers in the Region of £109,950**



## PROPERTY DESCRIPTION

An tastefully presented charming terrace property situated in this most convenient location, within easy reach to the city centre, Sprucefield and for access to the motorway network.

**Accommodation comprises in brief:-** Entrance Hall; Lounge open plan to Dining Room; Kitchen.

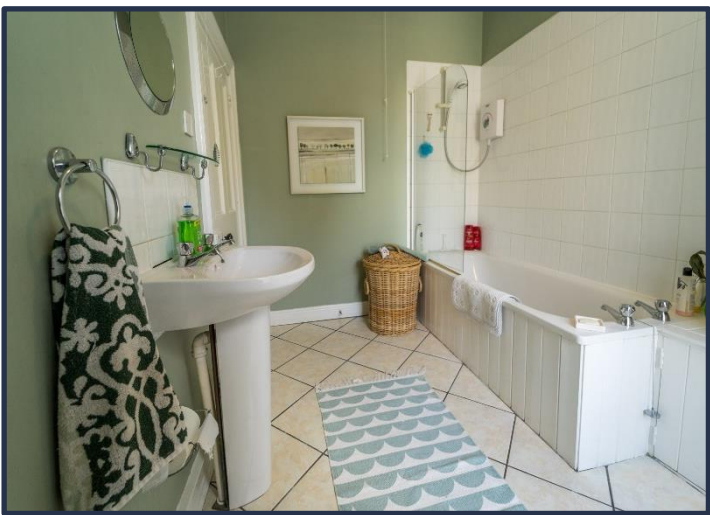
**First floor:** 2 good size Bedrooms; spacious Bathroom.

**Specification includes:-** Oil fired central heating with new condenser boiler fitted; fitted Kitchen with appliances; Spacious bathroom with white suite and electric shower over the bath.

**Outside:** Enclosed rear yard with tap and light. Utility/Storage house - plumbed for washing machine, light, power and central heating boiler. Enclosed rear garden in lawn and paved paths. Shrub bed borders and fence surround.

Fronting: Hillsborough Old Road.





**GROUND FLOOR**

**ENTRANCE HALL:**

Part glazed entrance door. Coved ceiling.

**LOUNGE**

4.05m (13'3") x 3.12m (10'3")

Cast iron fireplace on slate hearth. Coved ceiling. Archway to:-

**DINING ROOM**

3.2m (10'6") x 3.07m (10'1")

Coved ceiling.

**FIRST FLOOR**

**SPLIT LANDING**

**BEDROOM 1**

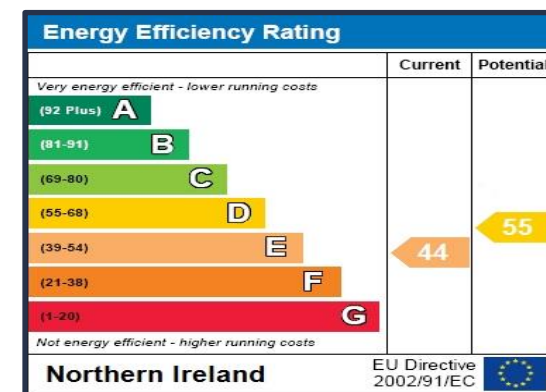
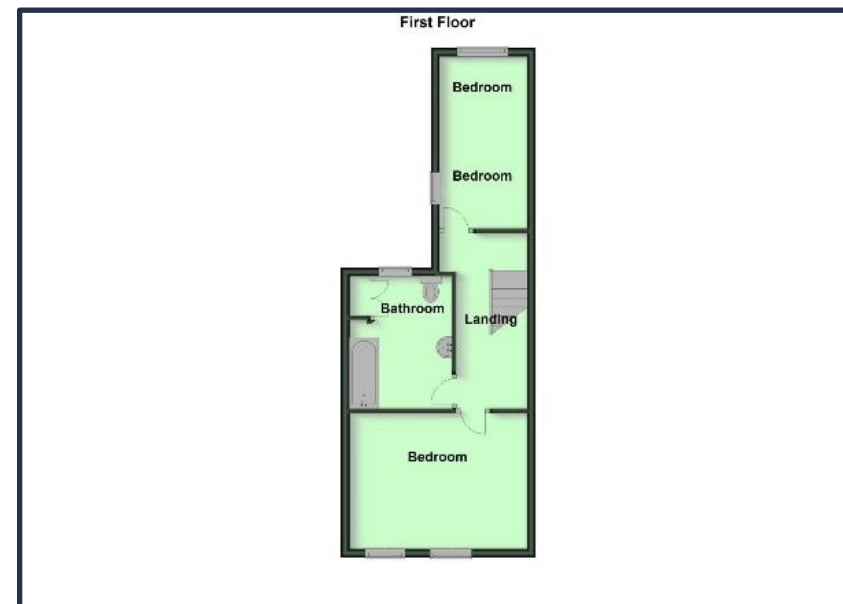
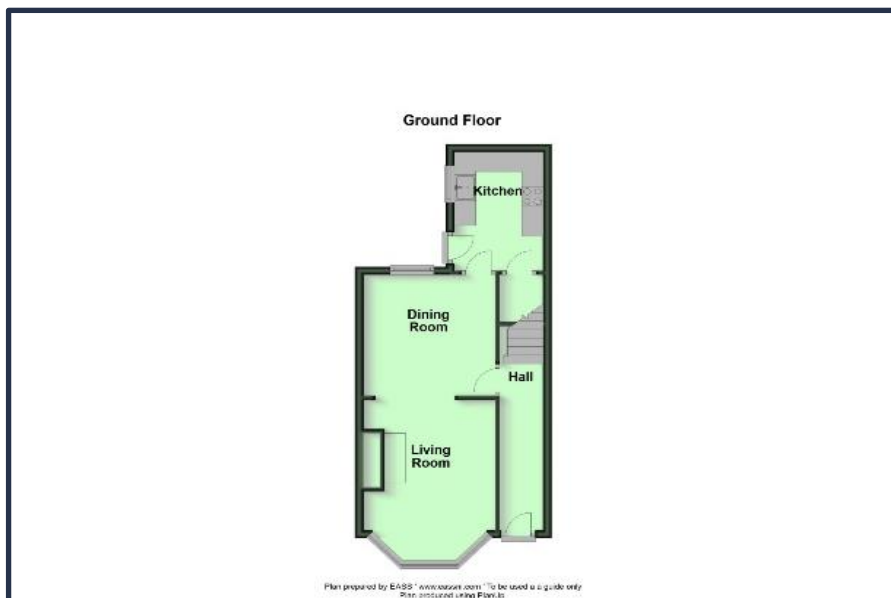
4.28m (14'1") x 3.35m (11'0")

**BEDROOM 2**

4.7m (15'5") x 2.09m (6'10")

**BATHROOM**

White suite comprising bath with shower screen and electric shower over; pedestal wash hand basin and low flush w.c. Tiled floor. Tiled walls around bath. Built-in hotpress. Downlighters.



12a Bow Street, Lisburn, County Antrim, BT28 1BN  
 028 9266 9030  
[info@taylorpattersonestateagents.com](mailto:info@taylorpattersonestateagents.com)  
<https://www.taylorpattersonestateagents.com>



FOR SALE