



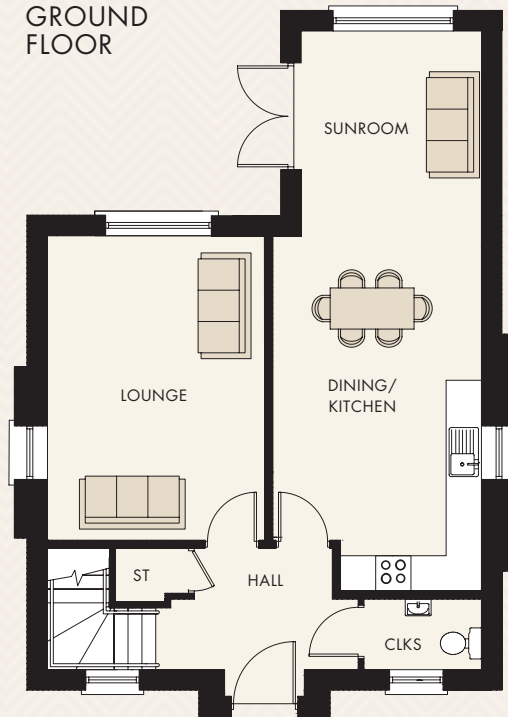
**BASHFORD  
PARK**  
CARRICKFERGUS

**THE  
JAMESON**

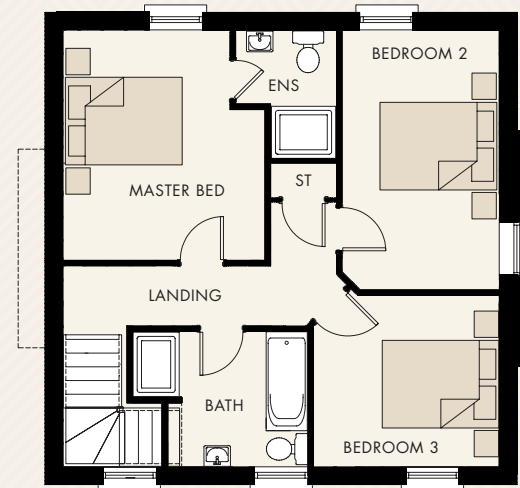


# THE JAMESON

GROUND FLOOR



FIRST FLOOR



Computer Visual.

## GROUND FLOOR

ENTRANCE HALL	
LOUNGE	17'0" x 12'1"
KITCHEN / DINING (MAX)	19'10" x 11'7"
SUNROOM	10'3" x 10'2"
CLOAKROOM	6'6" x 3'11"

## FIRST FLOOR

MASTER BEDROOM (MAX)	12'11" x 11'4"
ENSUITE (MAX)	6'11" x 5'8"
BEDROOM 2	14'7" x 8'10"
BEDROOM 3 (MAX)	10'5" x 9'7"
BATHROOM (MAX)	9'10" x 7'7"

## TOTAL FLOOR AREA

WITH SUNROOM 1,288 FT<sup>2</sup> APPROX.  
WITHOUT SUNROOM 1,175 FT<sup>2</sup> APPROX.