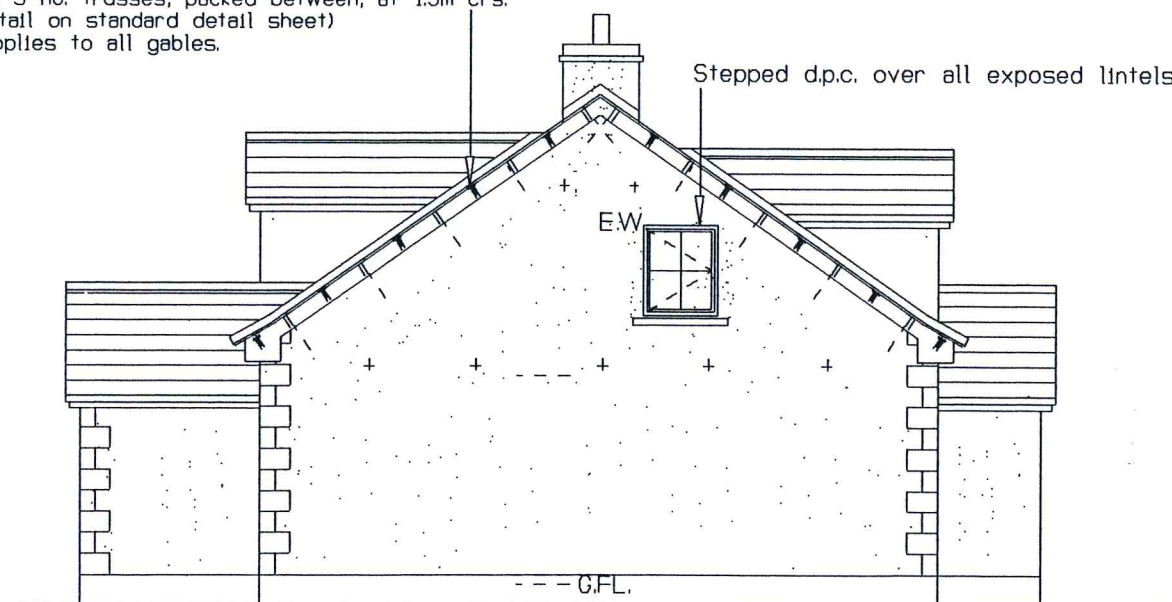




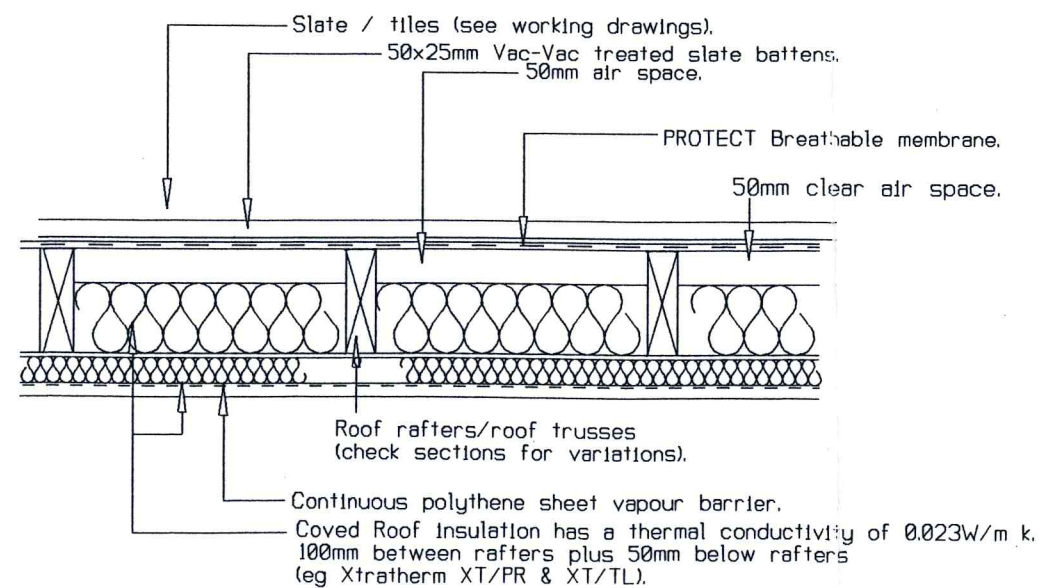
REAR ELEVATION

Top of gables strapped with CATNIC anchor bars 30x5x1.2 to span 3 no. trusses, packed between, at 1.5m crs. (see detail on standard detail sheet)
Same applies to all gables.

Level access to front entrance.
The ramped approach shall be firm and even, have an unobstructed width of not less than 900mm and a gradient not exceeding 1:12 (length up to 5.0m) or 1:15 (length up to 10.0m).



LEFT ELEVATION



DETAIL OF COVERED CEILING scale 1:10

ALL ROOF CONNECTIONS TO BE BOLTED WITH M10 DIA ZINC PLATED STEEL BOLTS, COMPLETE WITH DOUBLE-EDGE TOOTH PLATE BULLDOG CONNECTORS AND LARGE WASHERS.

Weather-proof collar.

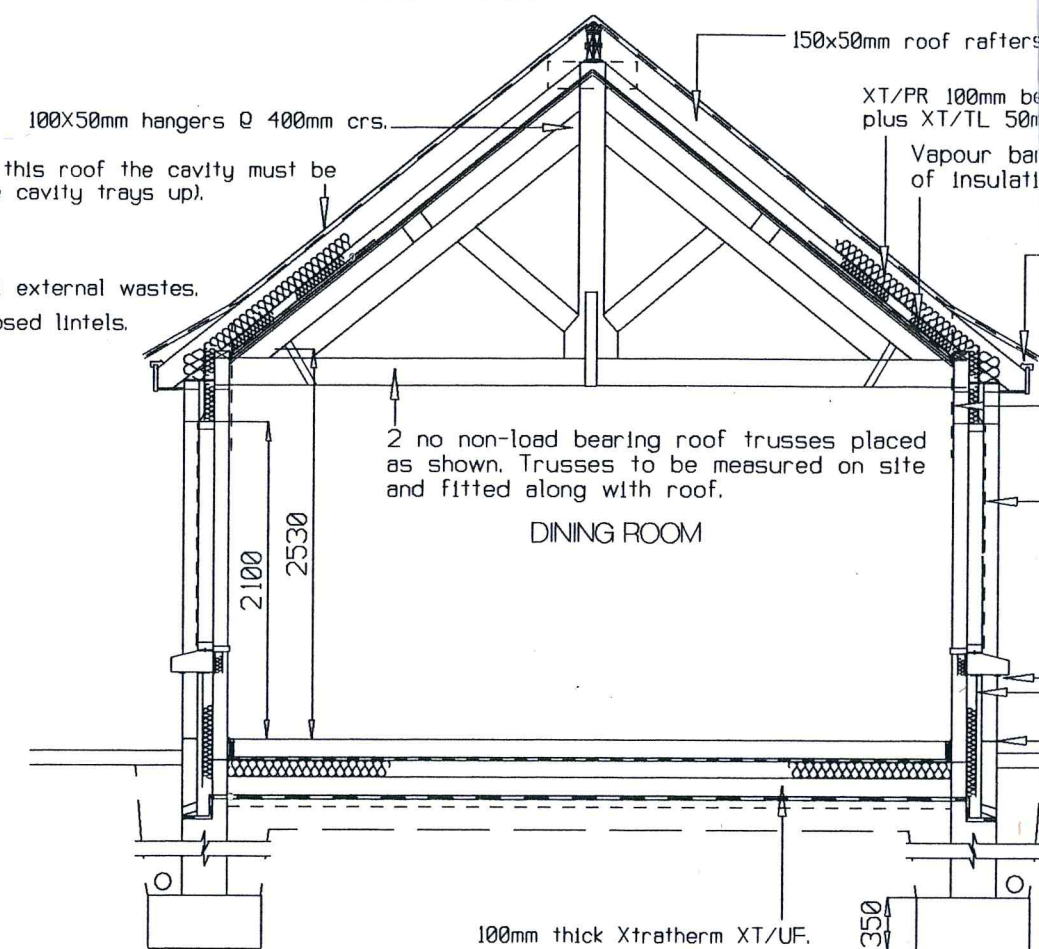
100x50mm hangers @ 400mm crs.

Above the line of this roof the cavity must be insulated (from the cavity trays up).

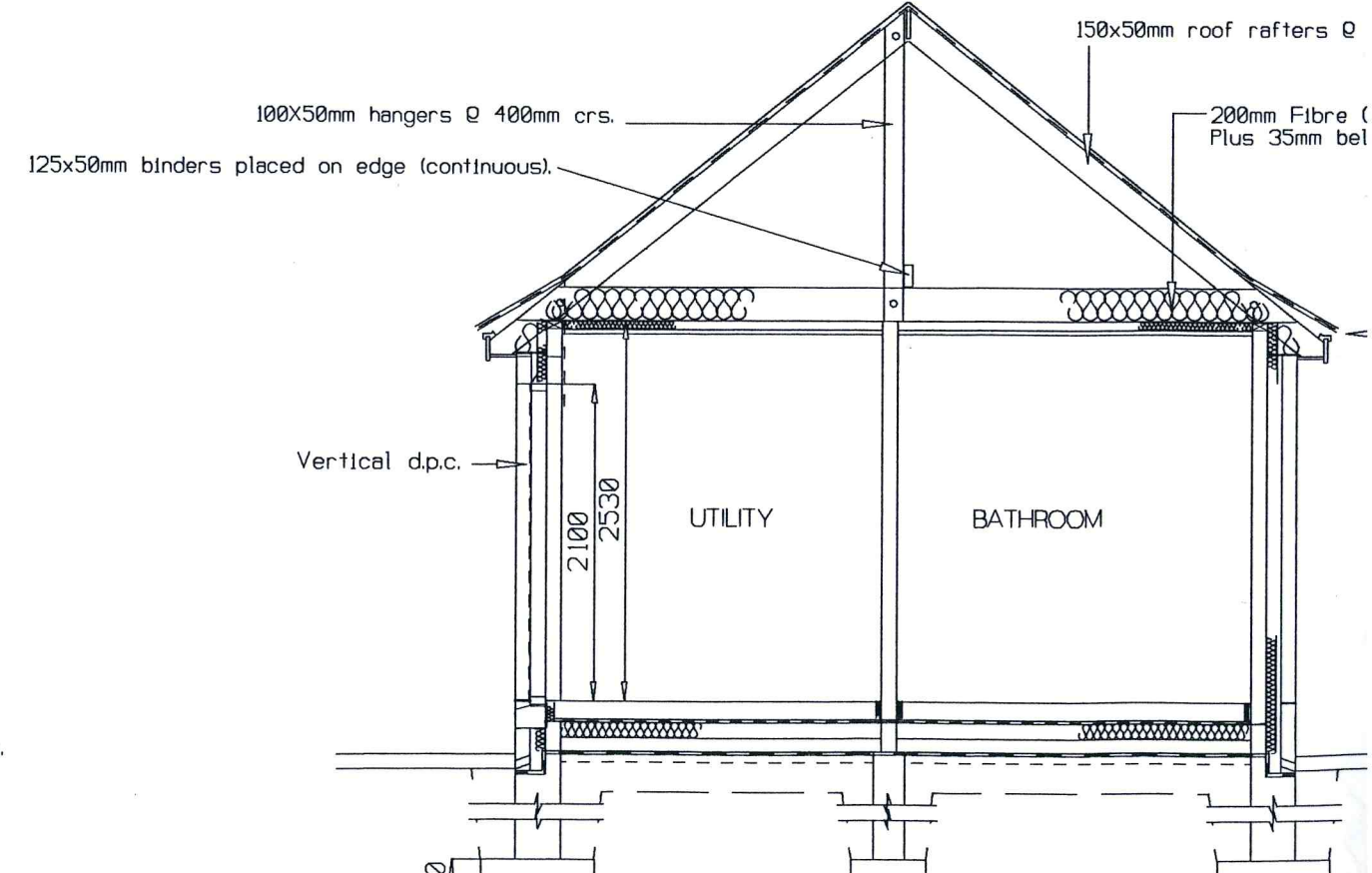
Provide rodding eyes to all external wastes.

Stepped d.p.c. over all exposed lintels.

Cream wet dash render to all external walls.



SECTION at C - C



Vertical d.p.c.

UTILITY

BATHROOM