

min concrete ridge tiles by REDLAND to give us 5mm high ventilation to full ridge. (applies to all edges). Fit in accordance with manufacturers instructions.

**CHIMNEY DETAILS:**  
 Flue liners are to be burnt clay type BS 1181 1971. The flues are to be jointed and surrounded with weak mix of lime mortar. No combustible material is to be within 200mm of flue liners to satisfy B.S. 1181. Stepped d.p.c. made to discharge a minimum of 100mm. Provide also lead tray with 25mm wide flange, tray is to extend across the roof.



FRONT ELEVATION

code 5 lead cavity trays, manufactured to a standard pitch, fitted in accordance with manufacturers instructions.

Alternative emergency escape window one side of this window to comply with min. size opening for emergency exit (see detail).

Tails of all rafters to be cut with Catnic anchor straps.

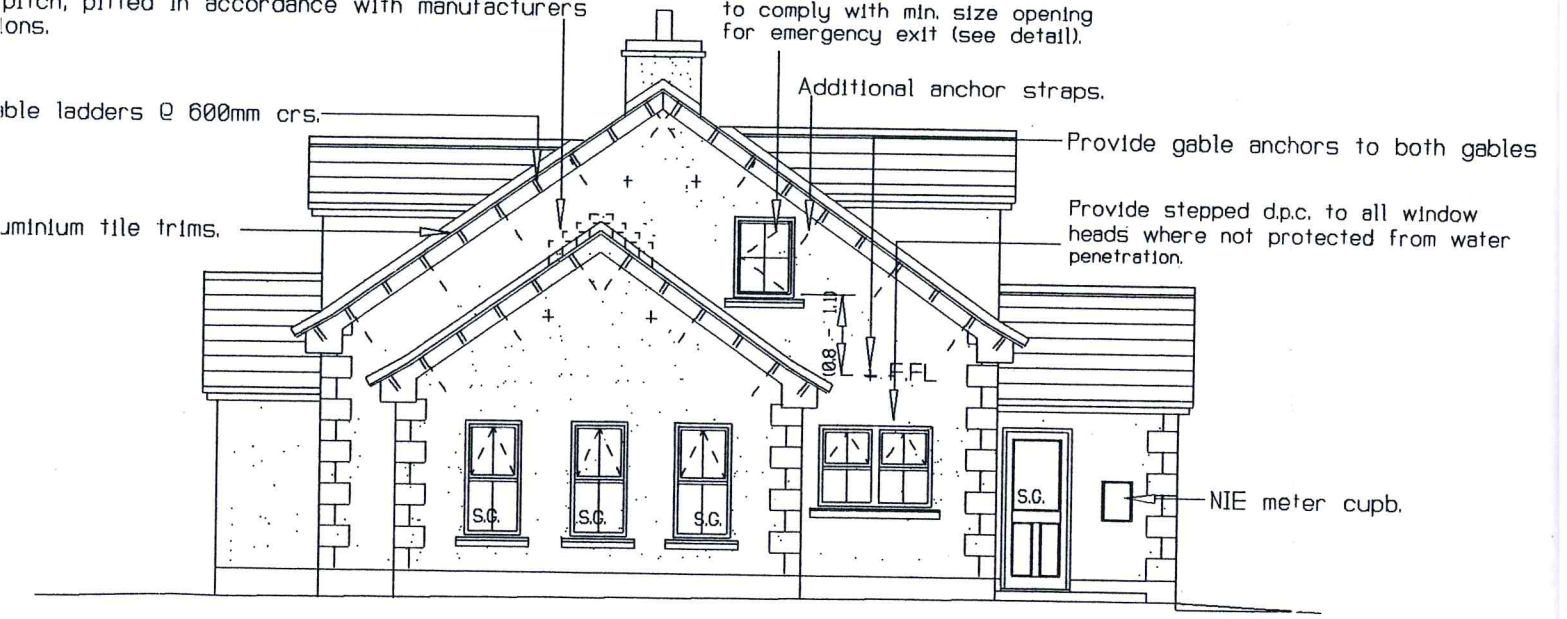
able ladders @ 600mm crs.

Additional anchor straps.

Provide gable anchors to both gables

Aluminium tile trims.

Provide stepped d.p.c. to all window heads where not protected from water penetration.



RIGHT ELEVATION

MH 600mm

MH 600mm

MH 600