



DRUMMAN MEADOWS

OFF PORTADOWN ROAD
ARMAGH

Computer Visual

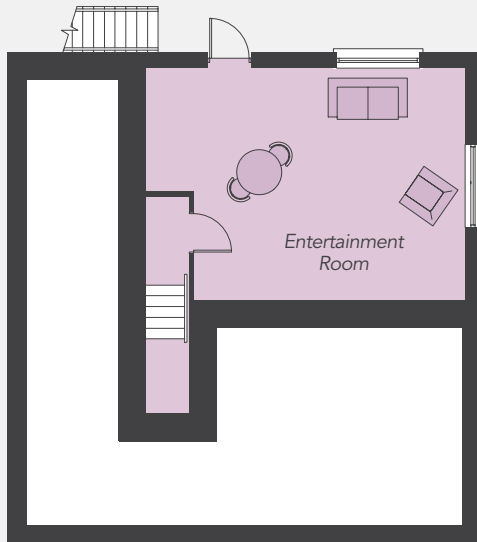
The Mulberry

Total Floor Area:
2,483 sq ft approx.

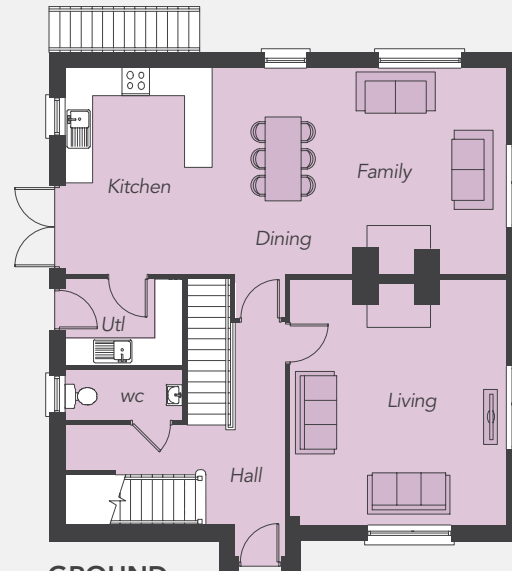


DRUMMAN MEADOWS

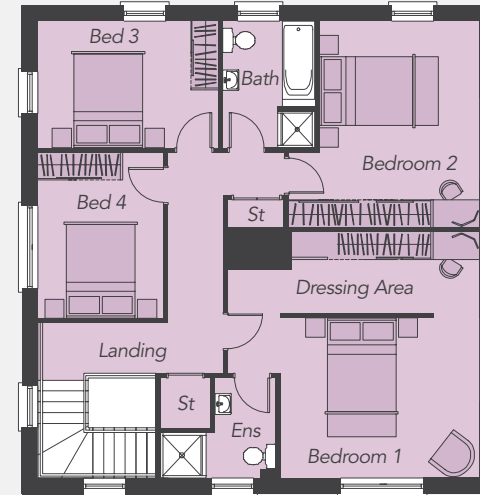
OFF PORTADOWN ROAD
ARMAGH



LOWER GROUND FLOOR



GROUND FLOOR



FIRST FLOOR

The Mulberry

Total Floor Area:
2,483 sq ft approx.

LOWER GROUND FLOOR

Entertainment Room 19'5" x 16'7"

GROUND FLOOR

Entrance Hall	
Living	17'7" x 15'5"
Kitchen / Dining / Family	31'7" x 14'9"
Utility Room	8'4" x 6'2"
WC	8'4" x 3'7"

FIRST FLOOR

Bedroom 1 (min)	14'2" x 11'9"
Dressing Area (max)	18'0" x 5'10"
Ensuite (max)	8'3" x 7'2"
Bedroom 2 (max)	14'9" x 13'7"
Bedroom 3	12'11" x 9'0"
Bedroom 4	11'10" x 9'0"
Bathroom	9'0" x 6'6"



Computer Visual