



**DRUMMAN
MEADOWS**

OFFICE: BROWN ROAD
DUBLIN 18

Computer Visual

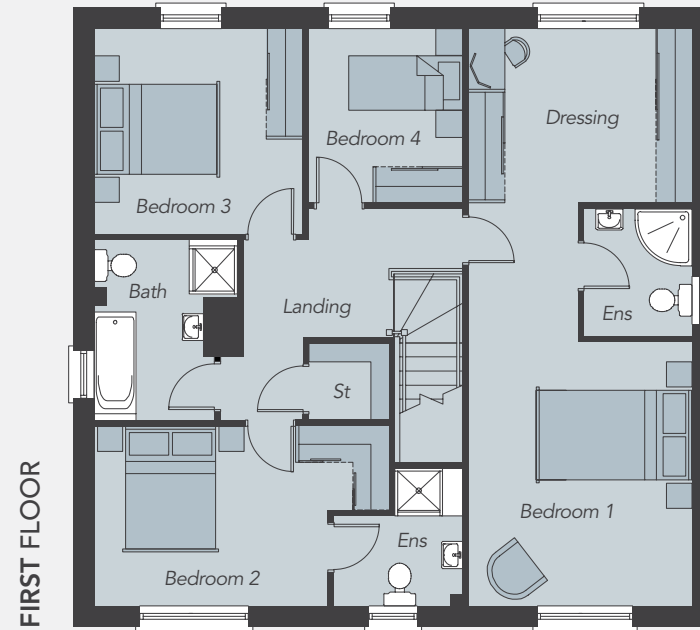
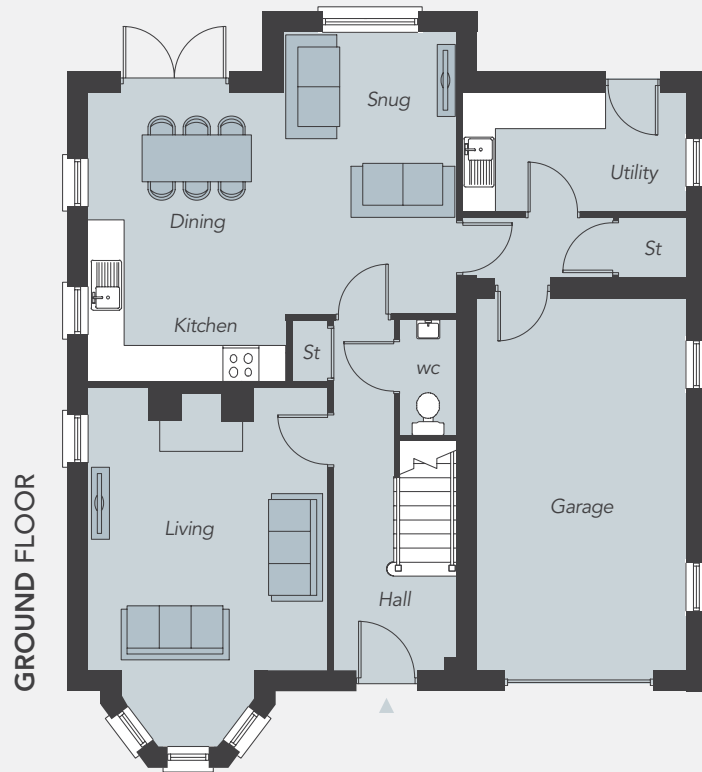
The Station House

Total Floor Area:
2,080 sq ft approx. (Including Garage)



DRUMMAN MEADOWS

OFF PORTADOWN ROAD
ARMAGH



The Station House

Total Floor Area:
2,080 sq ft approx. (Inc. Garage)

GROUND FLOOR

Entrance Hall	
Living (plus bay)	15'5" x 13'1"
Kitchen / Dining (max)	15'9" x 10'9"
Snug (max)	15'5" x 9'5"
Utility Room	12'2" x 6'6"
WC	6'3" x 2'11"
Integral Garage	20'4" x 11'4"

FIRST FLOOR

Bedroom 1	14'5" x 12'2"
Dressing Area	12'2" x 9'6"
Ensuite	6'11" x 5'10"
Bedroom 2 (max)	12'9" x 9'0"
Ensuite (max)	7'6" x 7'0"
Bedroom 3	11'4" x 11'3"
Bedroom 4	9'6" x 8'5"
Bathroom	9'10" x 7'4"

