

Dougan

RESIDENTIAL

Telephone 028 9030 8855
douganproperty.com



18 Hillmount Gardens

Belfast, BT10 0ES

Asking Price £127,500

KEY FEATURES

- Stunning End Terrace Located Off Finaghy Road South
- Popular And Convenient Location Within Walking Distance Of Finaghy Village
- Ease Of Access To Main Routes And Public Transport Services
- Bright And Spacious Living Room
- Modern Kitchen
- Three Generous Bedrooms
- Luxury First Floor Bathroom With Four Piece Suite
- Luxury Downstairs Shower Room
- Large Rear Garden Paid In Lawn
- Excellent Storage
- Gas Heating
- Triple Glazing
- Early Viewing Advised
-



SUMMARY

Very well presented end terrace well positioned within all the amenities of Finaghy village. The property also offers ease of access to public transport services and main arterial routes making Belfast city centre easily accessible.

The property has been finished to an excellent standard and comprises of a bright and spacious living room, modern kitchen and shower room to the ground floor. Three generous bedrooms and a well luxury family bathroom with a four piece suite are to the first floor.

The property further benefits from a large, private rear garden laid in lawn.

Early viewing is advised to appreciate this fine home.

ACCOMMODATION:

Ground Floor

ENTRANCE HALL: Front door, under stair recess

LIVING ROOM: 21' 9" x 10' 2" (6.63m x 3.1m) Double doors to rear garden, feature fireplace

SHOWER ROOM: Shower cubicle, low flush w.c, wash hand basin with chrome taps, heated chrome towel radiator, tongue and groove ceiling

KITCHEN: 10' 5" x 10' 1" (3.18m x 3.07m) Excellent range of high gloss units with chrome handles, stainless steel sink unit, work surfaces, integrated oven and four ring gas hob, chrome extractor fan, plumbed for washing machine, space for tumble dryer

STORAGE

First Floor

LANDING:

BEDROOM (1): 12' 2" x 10' 2" (3.71m x 3.1m) Built in storage

BEDROOM (2): 10' 3" x 9' 6" (3.1m x 2.87m)

BEDROOM (3): 10' 2" x 8' 2" (3.1m x 2.87m)

BATHROOM: Luxury four piece suite comprising of a panel bath with chrome taps, bidet, wash hand basin with chrome taps, low flush w.c, spot lighting

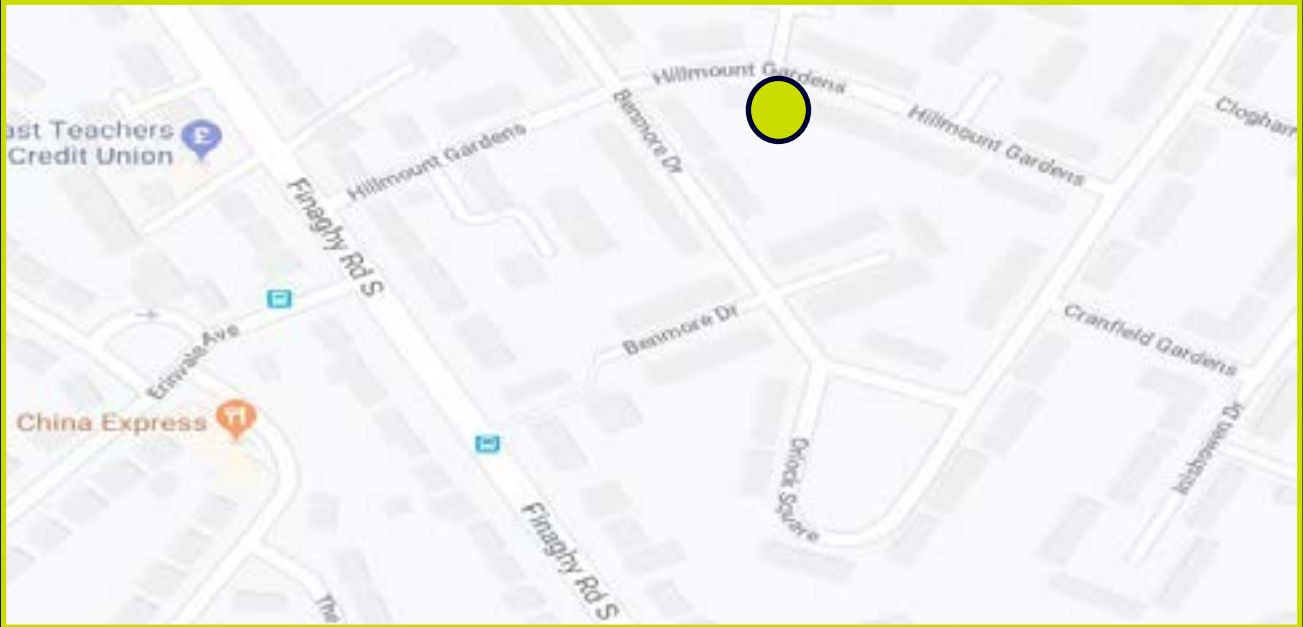
Outside

Large rear garden laid in lawn.



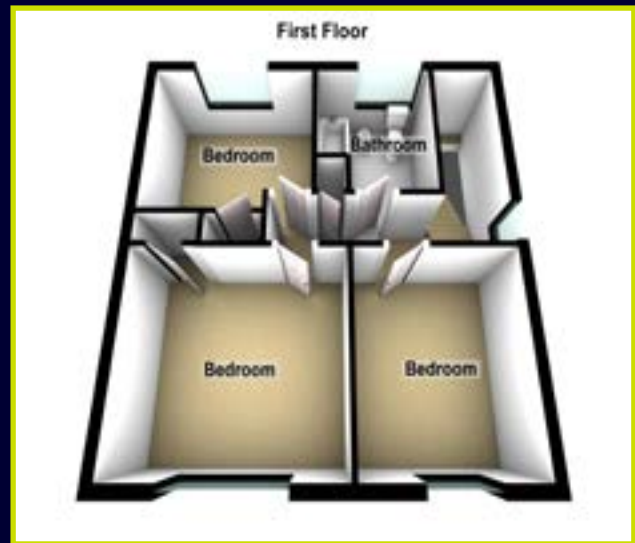


LOCATION MAP

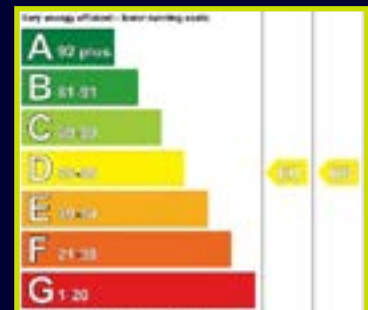


DIRECTIONS Travelling down Finaghy Road South from Upper Malone, Hillmount Gardens is on the right

FLOOR PLANS (NOT TO SCALE)



EPC



Dougan
RESIDENTIAL

6 Orpen Shopping Centre Upper Lisburn Road
Belfast BT10 0BG
Telephone 028 9030 8855
Email info@douganproperty.com
Web www.douganproperty.com



Dougan Residential for themselves and for the Vendors or Lessors of the property whose agents they are give notice that; i) these particulars are given without responsibility of Dougan Residential or the Vendors or Lessors as a general outline only, for the guidance of prospective purchasers or tenants, and do not constitute the whole or any part of an offer or contract; ii) Dougan Residential cannot guarantee the accuracy of any description, dimensions, references to condition, necessary permissions for use and occupation and other details contained herein and any prospective purchasers or tenants should not rely on them as statements or representations of fact but must satisfy themselves by inspection or otherwise as to the accuracy of each of them; iii) no employee of Dougan Residential has any authority to make or give any representation or warranty or enter into any contract whatsoever in relation to the property; iv) VAT may be payable on the purchase price and/or rent, all figures are quoted exclusive of VAT, intending purchasers or lessees must satisfy themselves as to the applicable VAT position, if necessary by taking appropriate professional advice; v) Dougan Residential will not be liable, in negligence or otherwise, for any loss arising from the use of these particulars.