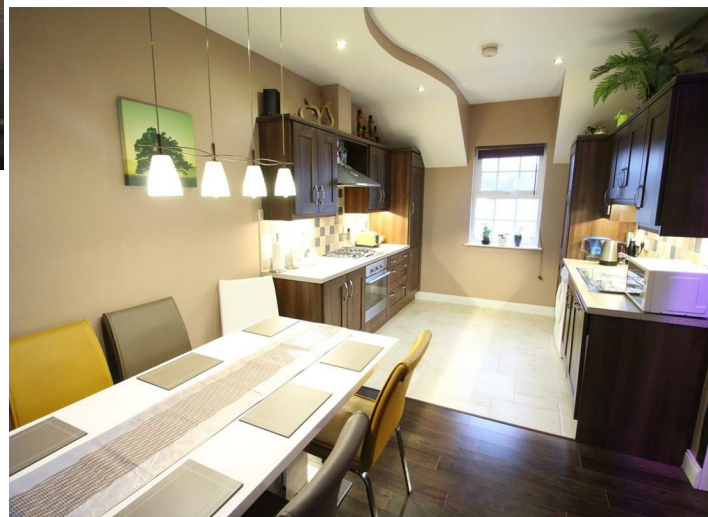


15 Blackrock Square, Newtownabbey, BT36 4NS



- *2nd Floor Contemporary Style Apartment*
- *3 Bedrooms*
- *Open Plan Living/Kitchen/Dining Aspect*
- *Luxury Shaker Kitchen with Integrated Appliances*
- *Luxurious Family 4 Piece Bathroom*
- *Modern Ensuite Shower Room*
- *Gas Central Heating*
- *PVC Double Glazed Windows*
- *Beautifully Presented Throughout*
- *Sought After Location*

PRICE Offers Over £105,000

Beautifully presented throughout this spacious loft style Apartment enjoys a high level of internal finish and specification throughout. Enjoying a luxury shaker style fitted Kitchen with open plan living/dining aspect and three Bedrooms with master ensuite this fantastic Apartment will ideally suit the young professional searching for a home with a 'Turn Key' style finish at a realistic price.

>Sales >New Homes >Commercial >Rentals >Mortgages

Antrim
12 Church Street
BT41 4BA
Tel: (028) 9446 6777

Ballyclare
51 Main Street
BT39 9AA
Tel: (028) 9334 0726

Ballymena
3 Fenaghy Road
BT42 1HW
Tel: (028) 2565 5733

Glengormley
18 Carnoney Road
BT36 6HN
Tel: (028) 9083 0803

Accommodation

Communal front door into communal Entrance Hall. Stairs to 2nd Floor landing. Entrance door into well presented Hallway.

OPEN PLAN LOUNGE WITH KITCHEN/DINING ASPECT

28'4 x 9'9 (8.64m x 2.97m)

Quality walnut effect laminate flooring to Lounge/Dining area. Views over square.

WALNUT EFFECT SHAKER STYLE FITTED KITCHEN

Equipped with comprehensive range of high and low level shaker style units. Integrated oven with 4 ring gas hob. Overhead extractor fan housed in stainless steel canopy. Integrated fridge/freezer and dishwasher. Single drainer sink unit with mixer tap. Plumbed for washing machine. Tiled floor. Complementary wall tiling. Feature contoured ceiling with low voltage lighting.

BEDROOM 1

12'3 x 11'9 (3.73m x 3.58m)

Quality laminate flooring.

MODERN ENSUITE

Comprising pedestal wash hand basin monobloc tap with tiled splashback. Button flush WC. Large step-in fully tiled shower enclosure.

BEDROOM 2

12'7 x 8'0 (3.84m x 2.44m)

Quality laminate flooring.

BEDROOM 3

8'9 x 8'2 (2.67m x 2.49m)

Quality laminate flooring.

LUXURIOUS MODERN FAMILY BATHROOM

Comprising panelled bath with tiled splashback. Pedestal wash hand basin with feature tiled accent panel. Button flush WC. Large shower enclosure. Tiled floor.

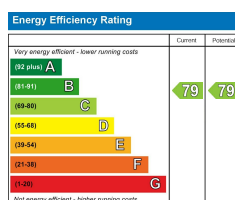
HALLWAY

Access to Roofspace. Excellent storage facility. May be suitable for further accommodation subject to necessary approvals.

Outside

Two allocated car parking spaces to rear. Communal paved terrace area to rear screened by perimeter wall. Outside store.

IMPORTANT NOTE TO ALL PURCHASERS: We have not tested any of the systems or appliances at this property.



Country Estates (N.I) Ltd. for themselves and the Vendors of this property whose agents are, give notice that:

These particulars do not constitute any part of an offer or contract

All statements contained in these particulars as to this property are made without responsibility on the part of Country Estates (N.I) Ltd. or the vendor

None of the statements contained in these particulars as to this property are to be relied on as statements or representations of fact

Any intending purchaser must satisfy himself or otherwise as to the correctness of the statement contained in these particulars

The vendor does not make or give, and neither Country Estates (N.I) Ltd. nor any person in their employment, has any authority to make or give representation or warranty whatever in relation to this property.