

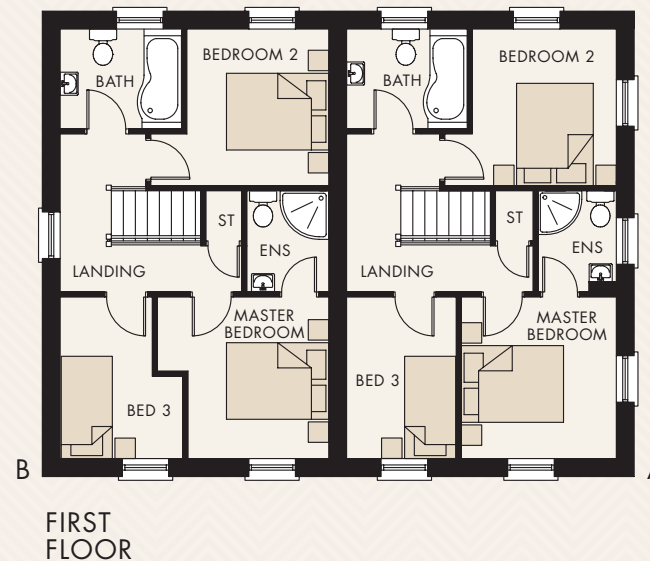
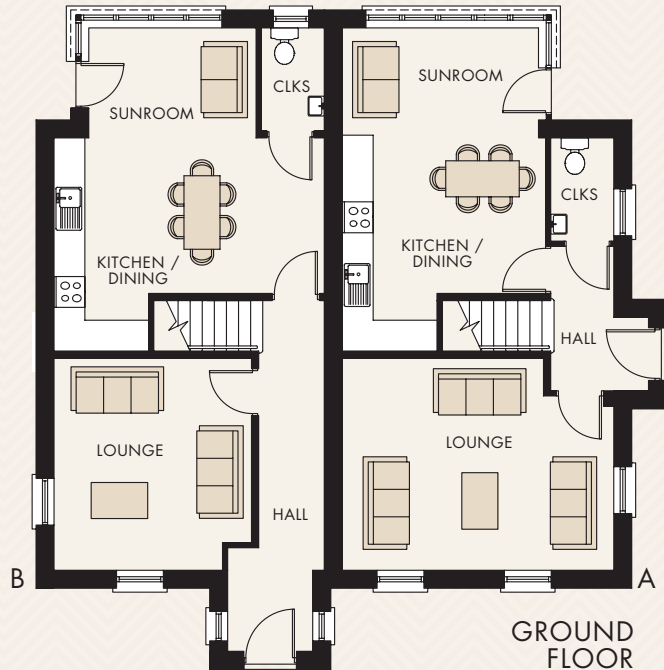


Computer Visual.

**BASHFORD  
PARK**  
CARRICKFERGUS

**THE  
ELLERBY**

# THE ELLERBY (BRICK)



## TOTAL FLOOR AREAS

A: 1,085 FT<sup>2</sup> APPROX.

B: 1,040 FT<sup>2</sup> APPROX.

### GROUND FLOOR (TYPE A)

ENTRANCE HALL	
LOUNGE (MAX)	17'4" x 13'6"
KITCHEN / DINING (MAX)	13'7" x 13'0"
SUNROOM	12'6" x 7'0"
CLOAKROOM	6'7" x 4'0"

### FIRST FLOOR (TYPE A)

MASTER BEDROOM	10'4" x 9'11"
ENSUITE	6'6" x 5'0"
BEDROOM 2 (MIN)	10'1" x 9'3"
BEDROOM 3	10'4" x 7'0"
BATHROOM	7'9" x 6'5"

### GROUND FLOOR (TYPE B)

ENTRANCE HALL	
LOUNGE (MAX)	13'6" x 12'9"
KITCHEN / DINING (MAX)	17'3" x 13'7"
SUNROOM	10'8" x 7'0"
CLOAKROOM	6'8" x 4'0"

### FIRST FLOOR (TYPE B)

MASTER BEDROOM (MIN)	10'4" x 9'0"
ENSUITE	6'6" x 5'3"
BEDROOM 2 (MIN)	10'1" x 9'1"
BEDROOM 3 (MAX)	10'4" x 7'10"
BATHROOM	7'10" x 6'5"