

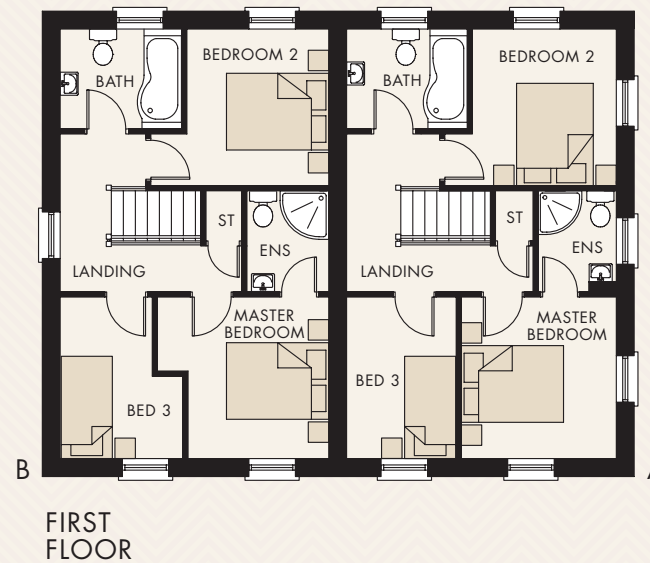
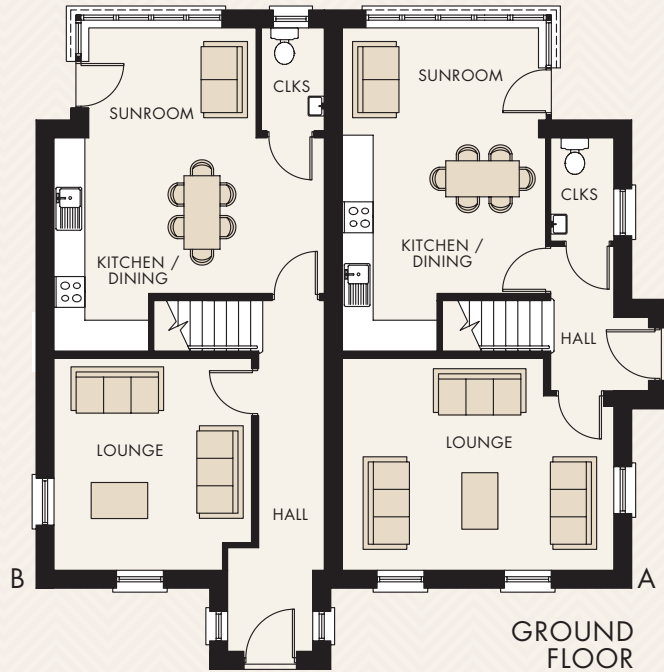


**BASHFORD
PARK**
CARRICKFERGUS

**THE
ELLERBY**

Computer Visual.

THE ELLERBY (RENDER)



TOTAL FLOOR AREAS

A: 1,085 FT² APPROX.

B: 1,040 FT² APPROX.

GROUND FLOOR (TYPE A)

ENTRANCE HALL	
LOUNGE (MAX)	17'4" x 13'6"
KITCHEN / DINING (MAX)	13'7" x 13'0"
SUNROOM	12'6" x 7'0"
CLOAKROOM	6'7" x 4'0"

FIRST FLOOR (TYPE A)

MASTER BEDROOM	10'4" x 9'11"
ENSUITE	6'6" x 5'0"
BEDROOM 2 (MIN)	10'1" x 9'3"
BEDROOM 3	10'4" x 7'0"
BATHROOM	7'9" x 6'5"

GROUND FLOOR (TYPE B)

ENTRANCE HALL	
LOUNGE (MAX)	13'6" x 12'9"
KITCHEN / DINING (MAX)	17'3" x 13'7"
SUNROOM	10'8" x 7'0"
CLOAKROOM	6'8" x 4'0"

FIRST FLOOR (TYPE B)

MASTER BEDROOM (MIN)	10'4" x 9'0"
ENSUITE	6'6" x 5'3"
BEDROOM 2 (MIN)	10'1" x 9'1"
BEDROOM 3 (MAX)	10'4" x 7'10"
BATHROOM	7'10" x 6'5"