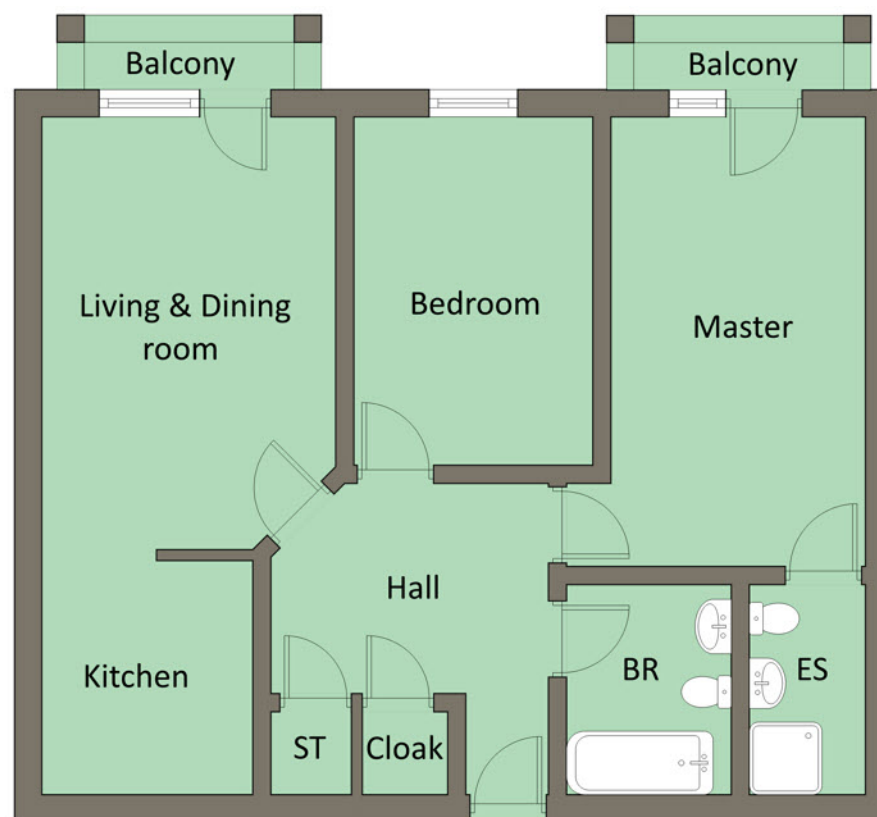


Outside

Communal car parking.

TEMPLETON  
ROBINSON

TEMPLETON  
ROBINSON



This attractive top floor apartment which is on the third floor occupies an excellent position within this fashionable and convenient development which is just on the outskirts of Bangor's bustling town centre off the ever popular Bloomfield Road South. Internally the property has been finished to a most exacting standard and offers bright and modern living. Of particular note is the spacious kitchen open plan to living room with access to the balcony which enjoys superb views over Bangor Rugby Football and Cricket Club and two bright bedrooms and bathroom.

**Offers Around  
£110,000**

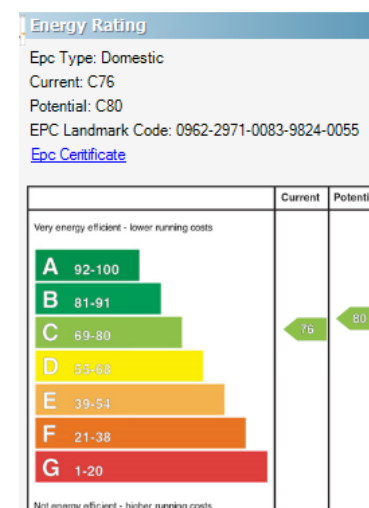
Apt 13 Alexandra House,  
Uprichard Court,  
Bangor,  
BT19 7AR

Viewing by  
appointment with  
& through agent  
028 9042 4747

With so much to offer, from convenience to Bangor town centre, easy commuting to Belfast and beyond via road or public transport, makes this an excellent opportunity to own a low maintenance home within this modern development.

- North Down - 028 90 42 4747
- Lisburn Road - 028 90 66 3030
- Ballyhackamore - 028 90 65 0000
- Lisburn - 028 92 66 1700

www.templetonrobinson.com



These particulars do not constitute any part of an offer or contract. None of the statements contained in these particulars are to be relied on as statements or representations of fact and intending purchasers must satisfy themselves by inspection or otherwise to the correctness of each of the statements contained in these particulars. The Vendor does not make or give, neither Templeton Robinson, nor any person in its employment has any authority to make or give, any representation or warranty whatever in relation to this property. All dimensions are taken to nearest 3 inches.



Apt 13 Alexandra House,  
Uprichard Court,  
Bangor, BT19 7AR

## Property Features

Two Bathrooms

Attractive 3rd Floor Apartment

Lift & Stairs to all floors

Kitchen leading to Lounge with access to  
Balcony - superb views over the playing fields

Two Well Proportioned Bedrooms - access to  
balcony from Master Bedroom

Modern White Bathroom Suite

Double Glazed Windows

Gas Heating

Resident & Visitor Parking

£606 per 6 months

Convenient Location

## Location:

Travelling on the Bloomfield Road South, turn left into  
Upritchard Court and Alexandra House is on the right hand  
side.

## Property Comprises

### Ground Floor

Entrance door to . . .

ENTRANCE HALL: Laminate wood floor, built-in cloaks cupboard  
and storage cupboard.

LOUNGE: 15' 6" x 10' 8" (4.72m x 3.25m) Laminate wood floor,  
door to balcony. Open plan to . . .

KITCHEN: 7' 8" x 7' 1" (2.34m x 2.16m) Range of oak effect high  
and low level units, laminate work surfaces, built-in four ring hob and  
underneath oven, extractor hood with integrated extractor fan, single  
drainer stainless steel sink unit with mixer tap, plumbed for washing  
machine, integrated dishwasher, part tiled walls, ceramic tiled floor.

BEDROOM (1): 16' 4" x 9' 1" (4.98m x 2.77m)

BEDROOM (2): 12' 8" x 8' 11" (3.86m x 2.72m)

BATHROOM: White suite comprising panelled bath with mixer taps,  
edestal wash hand basin with mixer taps. W.C. Part tiled walls,  
ceramic tiled floor.

Management company: MB Wilson

Service Charge: £606 per six months.

