



19 Rathmore Avenue  
Belfast  
BT10 0FT

Asking Price  
**£129,950**

**Dougan**

RESIDENTIAL

Telephone 028 9030 8855  
[www.douganproperty.com](http://www.douganproperty.com)



## KEY FEATURES

- End Terrace Located In Erinvale Off Finaghy Road South
- Excellent Location Close To The Vibrant Finaghy Village
- Many Local Amenities, Public Transport Services And Main Arterial Routes Easily Accessible
- Front Living Room
- Kitchen Open To Dining Area With Double Doors To Rear Garden
- Three Generous Bedrooms
- First Floor Bathroom
- Driveway Parking
- Rear Patio And Garden
- Driveway Parking
- Oil Heating
- Double Glazed
- Early Viewing Advised



## SUMMARY

End terrace located in the popular Erinvale developments off Finaghy Road South in South Belfast. Finaghy village is close at hand and Belfast City Centre is easily accessible by bus or car.

The property comprises of a front living room and a kitchen open to dining room on the ground floor. Three bedrooms and a family bathroom are to the first floor.

The property further benefits from a rear patio and garden, detached garage and driveway parking.

Early viewing is advised.



**ACCOMMODATION:**

**Ground Floor**

**ENTRANCE HALL:** Laminate wooden floor, wooden front door

**LIVING ROOM:** 12' 5" x 10' 8" (3.78m x 3.25m) Laminate wooden floor, cornicing

**KITCHEN WITH DINING AREA :** 17' 2" x 11' 5" (5.23m x 3.48m) Range of high and low level units, glazed display cabinets, formica work surfaces, stainless steel sink unit, integrated oven and extractor fan, breakfast bar, space for fridge freezer, double doors to rear garden

**First Floor**

**LANDING:** Roof space access

**BEDROOM (1):** 12' 1" x 10' 7" (3.68m x 3.23m) Built in storage

**BEDROOM (2):** 11' 3" x 10' 8" (3.43m x 3.25m)

**BEDROOM (3):** 9' 2" x 7' 4" (2.79m x 2.24m) Built in storage

**BATHROOM:** White suite, pedestal wash hand basin, low flush w.c, panel bath with electric shower over

**Outside**

**DETACHED GARAGE:** 16' 0" x 8' 2" (4.88m x 2.49m)

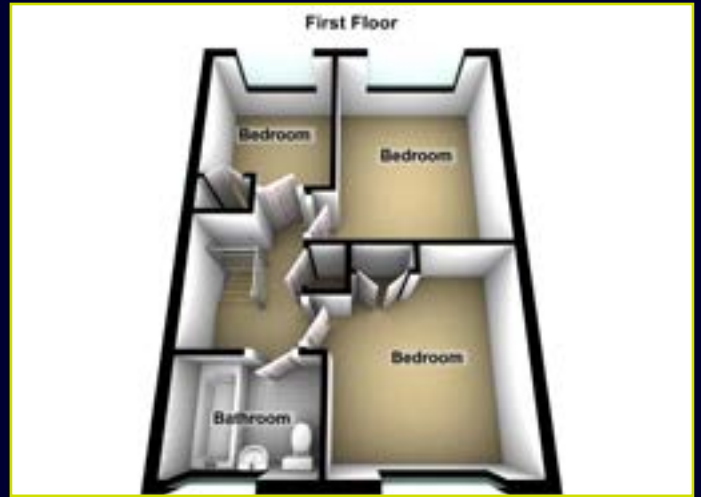
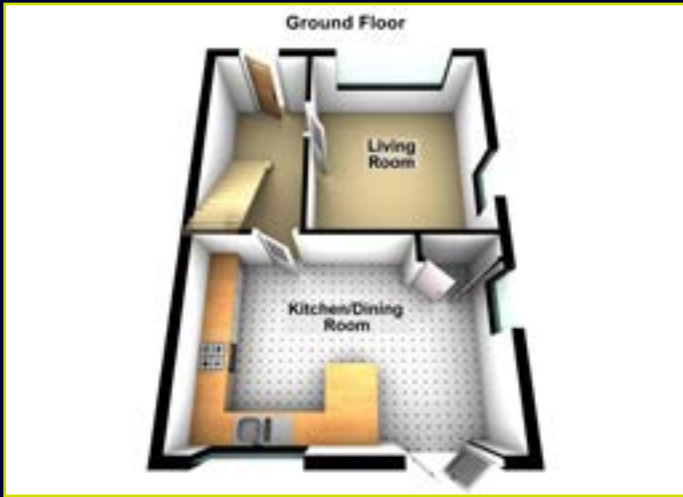
Driveway and parking for several cars.

Paved patio and rear garden in lawn.

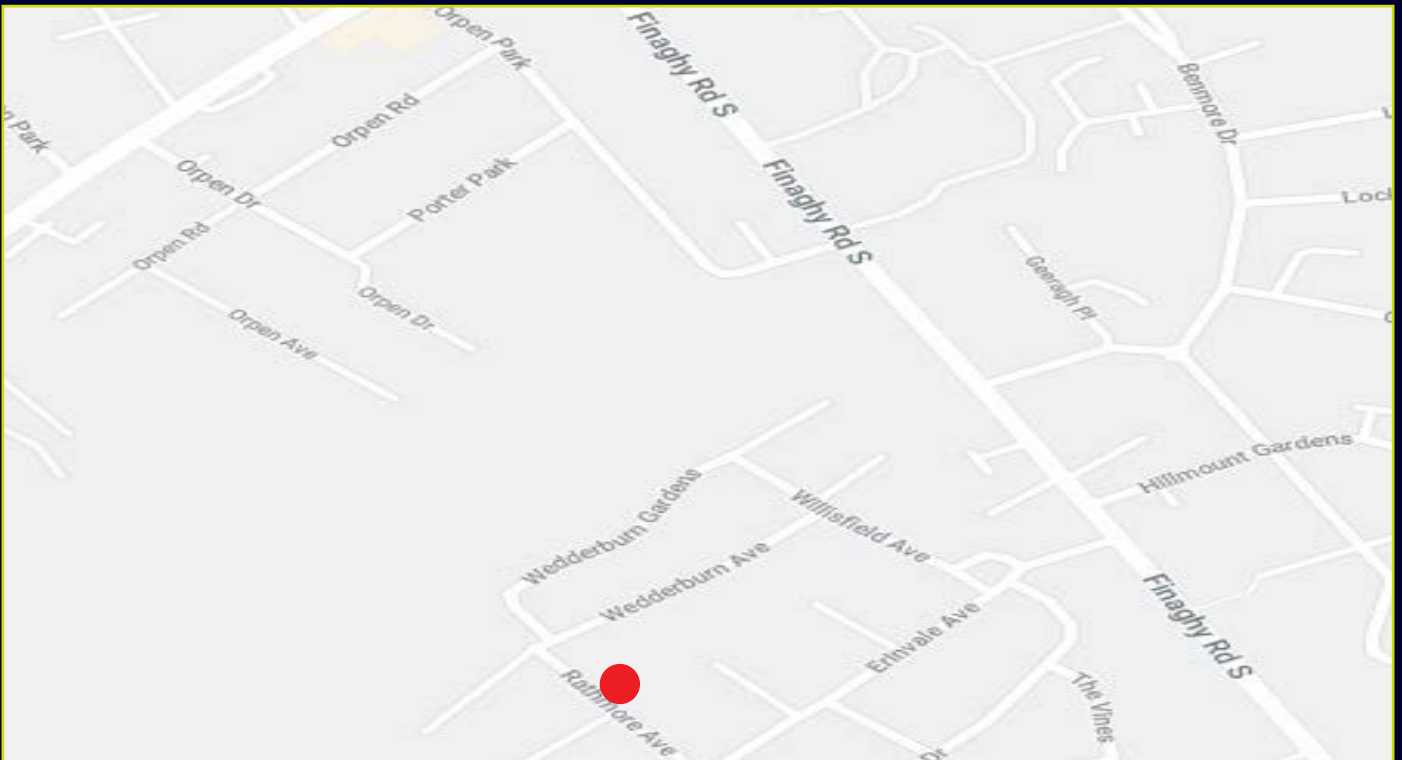




## FLOOR PLANS (NOT TO SCALE)



## LOCATION MAP



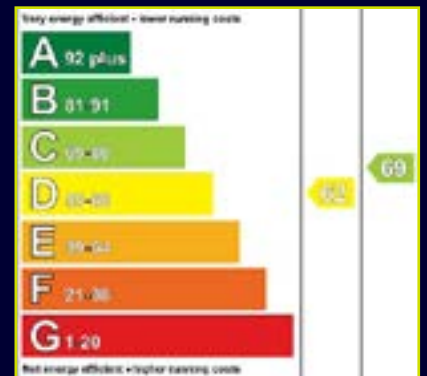
**DIRECTIONS:** Erinvale, Off Finaghy Road South

**EPC**



**Dougan**  
RESIDENTIAL

6 Orpen Shopping Centre Upper Lisburn Road  
Belfast BT10 0BG  
Telephone 028 9030 8855  
Email [info@douganproperty.com](mailto:info@douganproperty.com)  
Web [www.douganproperty.com](http://www.douganproperty.com)



Dougan Residential for themselves and for the Vendors or Lessors of the property whose agents they are give notice that; i) these particulars are given without responsibility of Dougan Residential or the Vendors or Lessors as a general outline only, for the guidance of prospective purchasers or tenants, and do not constitute the whole or any part of an offer or contract; ii) Dougan Residential cannot guarantee the accuracy of any description, dimensions, references to condition, necessary permissions for use and occupation and other details contained herein and any prospective purchasers or tenants should not rely on them as statements or representations of fact but must satisfy themselves by inspection or otherwise as to the accuracy of each of them; iii) no employee of Dougan Residential has any authority to make or give any representation or warranty or enter into any contract whatsoever in relation to the property; iv) VAT may be payable on the purchase price and/or rent, all figures are quoted exclusive of VAT, intending purchasers or lessees must satisfy themselves as to the applicable VAT position, if necessary by taking appropriate professional advice; v) Dougan Residential will not be liable, in negligence or otherwise, for any loss arising from the use of these particulars.