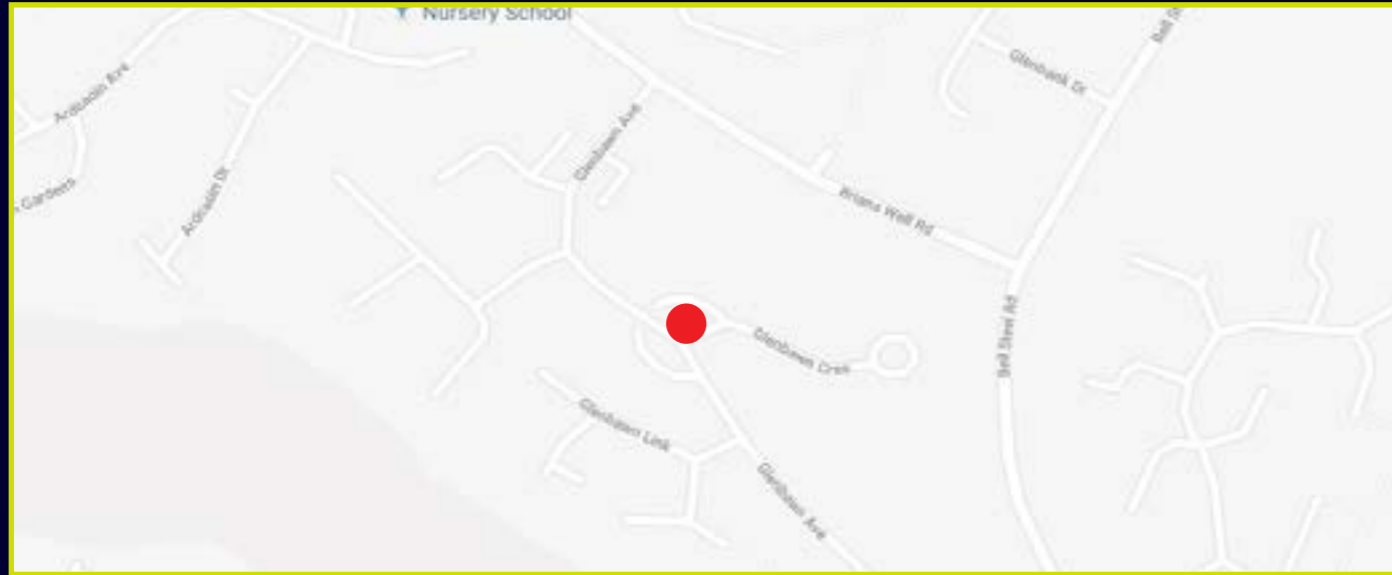
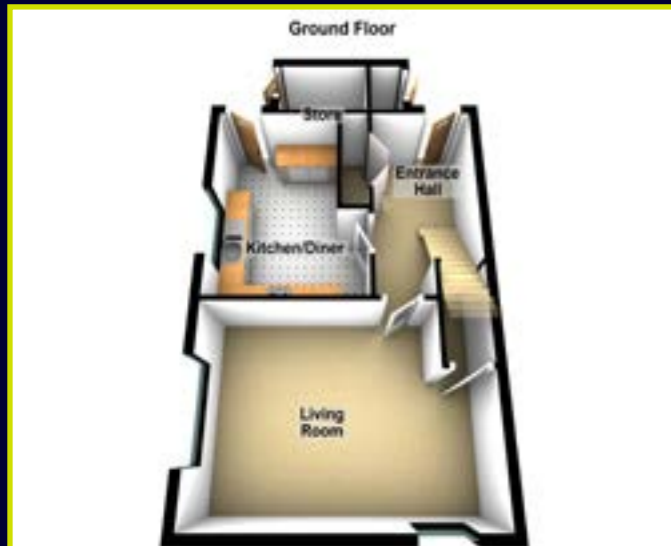


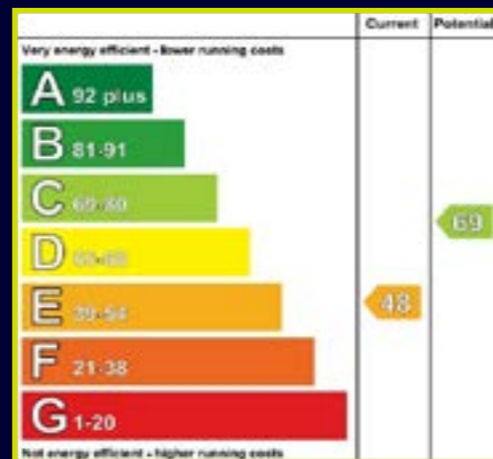
LOCATION MAP



FLOOR PLANS (NOT TO SCALE)



EPC



Dougan
RESIDENTIAL

6 Orpen Shopping Centre Upper Lisburn Road
Belfast BT10 0BG
Telephone 028 9030 8855
Email info@douganproperty.com
Web www.douganproperty.com

Dougan Residential for themselves and for the Vendors or Lessors of the property whose agents they are give notice that: i) these particulars are given without responsibility of Dougan Residential or the Vendors or Lessors as a general outline only, for the guidance of prospective purchasers or tenants, and do not constitute the whole or any part of an offer or contract; ii) Dougan Residential cannot guarantee the accuracy of any description, dimensions, references to condition, necessary permissions for use and occupation and other details contained herein and any prospective purchasers or tenants should not rely on them as statements or representations of fact but must satisfy themselves by inspection or otherwise as to the accuracy of each of them; iii) no employee of Dougan Residential has any authority to make or give any representation or warranty or enter into any contract whatsoever in relation to the property; iv) VAT may be payable on the purchase price and/or rent, all figures are quoted exclusive of VAT, intending purchasers or lessees must satisfy themselves as to the applicable VAT position, if necessary by taking appropriate professional advice; v) Dougan Residential will not be liable, in negligence or otherwise, for any loss arising from the use of these particulars.



21 Glenbawn Square
Dunmurry
Belfast
BT17 0TT

Asking Price
£65,000

Dougan
RESIDENTIAL

Telephone 028 9030 8855
www.douganproperty.com



KEY FEATURES

- End Terrace Property Located In The Poleglass Area Of West Belfast
- Spacious Living Room
- Fitted Kitchen
- Three Bedrooms
- Shower Room In White Suite
- Oil Fired Central Heating
- uPVC Double Glazed Windows
- Side & Rear Garden Areas
- Driveway Parking
- Early Viewing Advised

SUMMARY

End -Terrace situated in a popular and convenient residential location in the Poleglass area of West Belfast. The property offers ease of access to Dunmurry Village, Lisburn and Belfast. Many local amenities are within walking distance.

Internally the property is deceptively spacious. The ground floor comprises of a bright and spacious living room and fitted kitchen on ground floor. Three bedrooms and shower room in white suite are on the first floor.

Externally the property benefits from side and rear garden areas, driveway parking, oil fired central heating and uPVC Double Glazed Windows.

Early viewing advised to avoid disappointment.



ACCOMMODATION:

Ground Floor

ENTRANCE PORCH: Storage

ENTRANCE HALL: Cloakroom

LIVING ROOM: 17' 8" x 11' 7" (5.38m x 3.53m) Wooden floor, feature fireplace

KITCHEN WITH DINING AREA : 12' 5" x 10' 6" (3.78m x 3.2m) Excellent range of high and low level units with feature under lightings, chrome handles and formica work surfaces, stainless steel sink unit, space for oven and hob, extractor fan, space for fridge freezer, tiled floor, partly tiled walls

First Floor

LANDING: Walk in storage, hot press, roof space access

BEDROOM (1): 11' 11" x 10' 9" (3.63m x 3.28m)

BEDROOM (2): 11' 0" x 10' 7" (3.35m x 3.23m)

BEDROOM (3): 11' 1" x 6' 5" (3.38m x 1.96m) Built in storage

SHOWER ROOM: Low flush w.c, pedestal wash hand basin with vanity unit, heated chrome towel radiator, fully tiled shower cubicle, tongue and groove ceiling, spot lighting

Outside

Brick paviour front driveway.
Front, side and rear gardens.