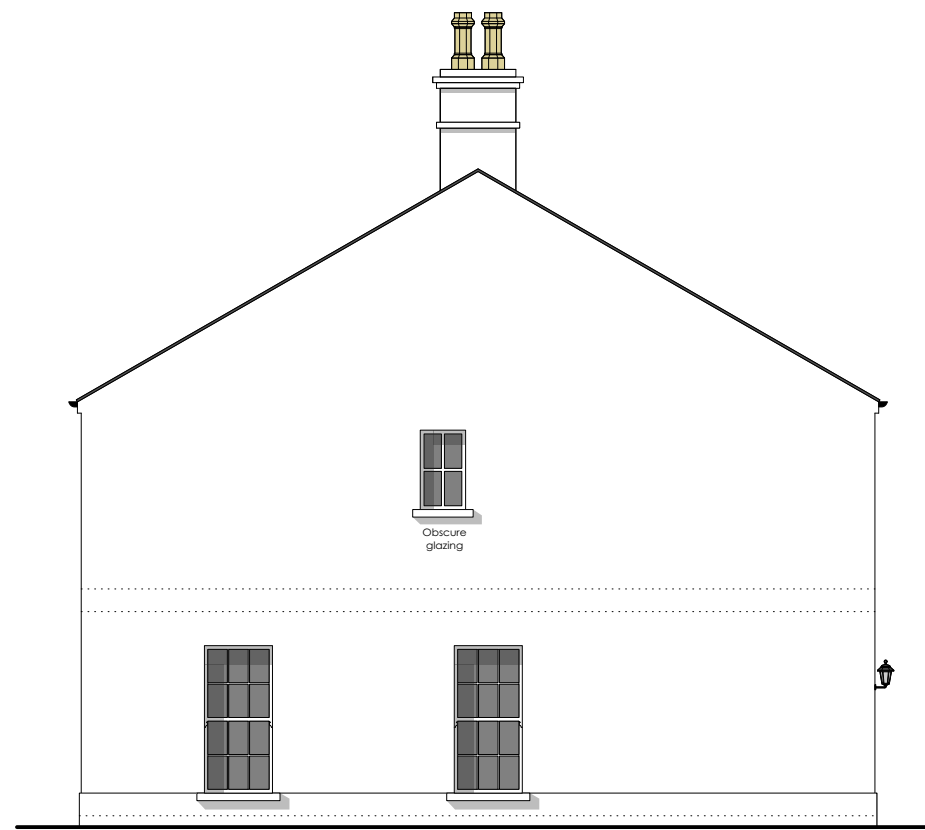
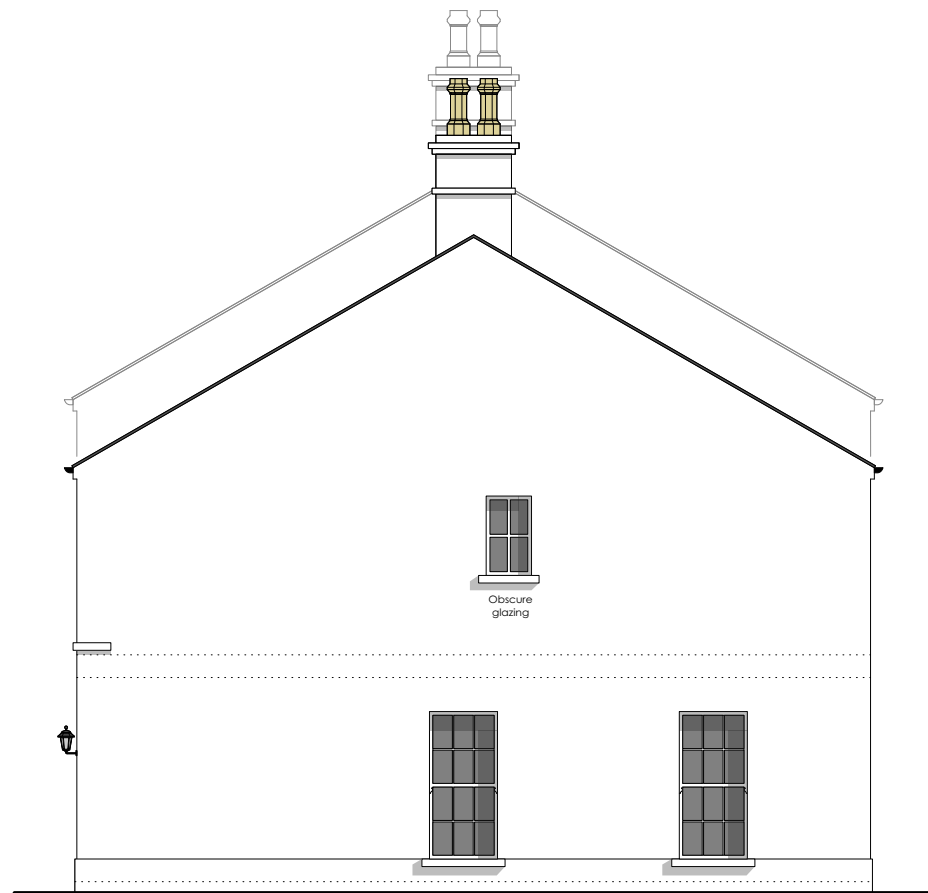




FRONT ELEVATION



SIDE ELEVATION



SIDE ELEVATION



REAR ELEVATION

GENERAL FINISHES:	
<b>Walls</b>	Smooth render, painted.
<b>Roofs</b>	Dark blue / black roofing slates or tiles. Corbelled eaves detail. Lead flashings.
<b>Chimney's</b>	Smooth render, painted. Precast concrete copings. Fireclay chimney pots.
<b>Rainwater Goods</b>	Black uPVC / Aluminium gutters and downpipes.
<b>Windows &amp; Patio Doors</b>	Treated hardwood / uPVC windows, colour dark grey. Precast concrete sills.
<b>Doors</b>	Treated hardwood / composite, colour dark grey.