

Go Retail Park, Killea

To Let

Modern retail units from 714 - 2,117 sq ft

Trade counter unit of 1,500 sq ft

Office unit of 1,261 sq ft



Lambert
Smith
Hampton

Location/Description

Prominent location in Killea Village Centre adjoining a new Go Filling Station. Generous on-site car parking available.

- Derry City Centre 7 miles
- Letterkenny 16 miles
- Strabane 9 miles

Schedule of Accommodation

Unit	Sq Ft	Sq M
Retail Unit 1	738	68.53
Retail Unit 2	714	66.30
Retail Unit 3	868	80.61
Retail Unit 4	LET TO CRAFT MERCHANTS	
Retail Unit 5	2,117	197
Office Unit 6	1,261	117
Trade Counter	1,500	140

Copy floor plans attached.

Further Information/Viewing Arrangements

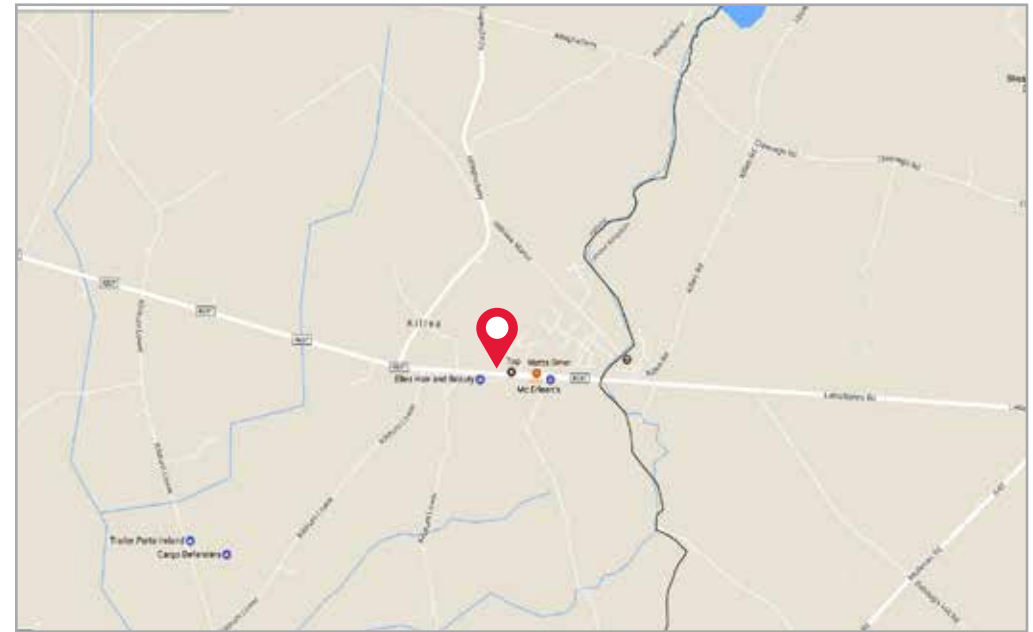
For further information or to arrange a viewing, please contact:

**Lambert
Smith
Hampton**

Tom Donnan
0289026 9238
tdonnan@lsh.ie

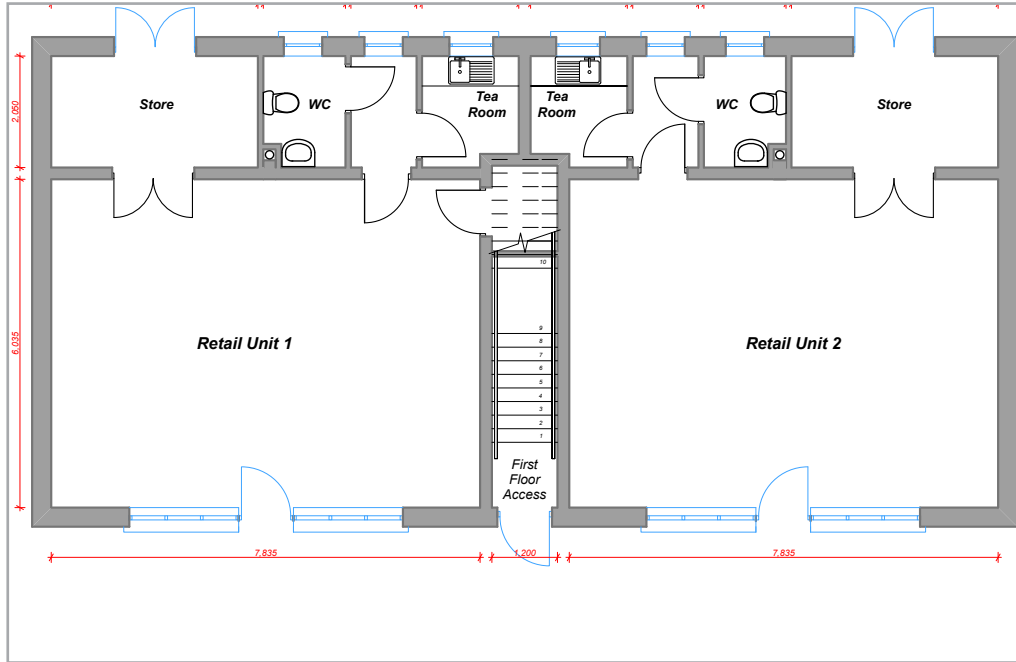
Lambert Smith Hampton

Clarence House
4/10 May Street
Belfast BT1 4NJ
028 9032 7954



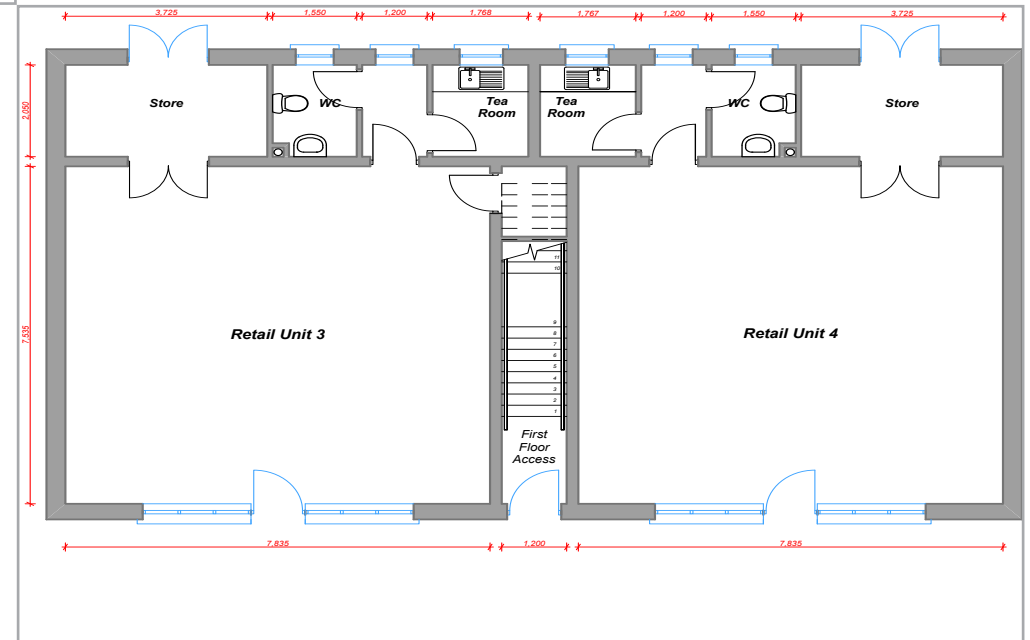
For Indicative Purposes Only

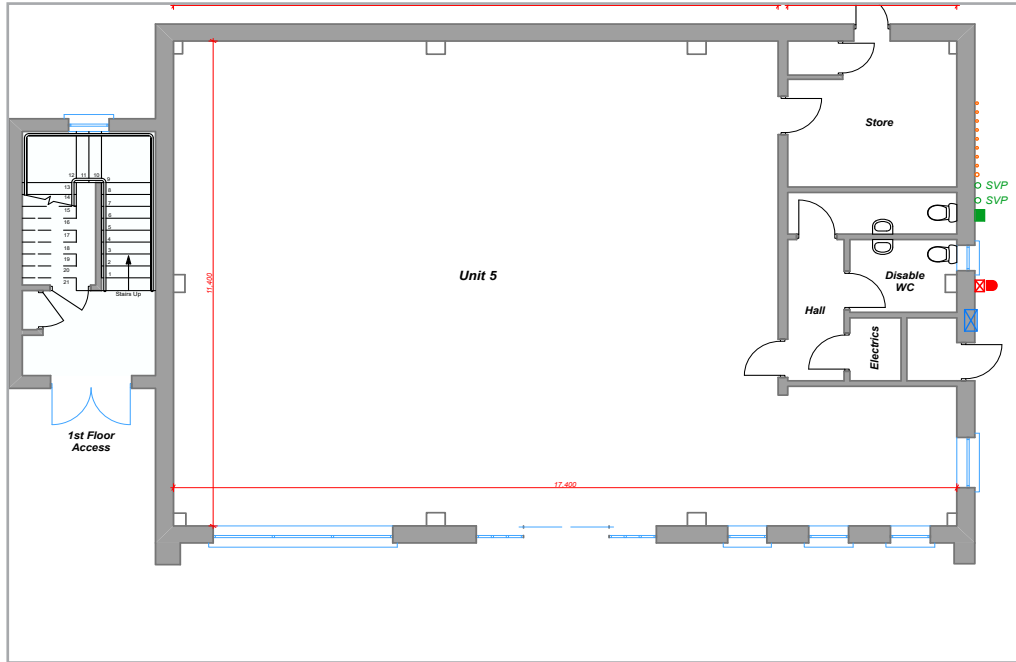




Ground Floor Block B

Ground Floor Block A





Subject to Contract and Exclusive of VAT © Lambert Smith Hampton January 2017

Disclaimer: Lambert Smith Hampton Group Limited and its subsidiaries and their joint agents if any ("LSH") for themselves and for the seller or landlord of the property whose agents they give notice that: (i) These particulars are given and any statement about the property is made without responsibility on the part of LSH or the seller or landlord and do not constitute the whole or any part of an offer or contract. (ii) Any description, dimension, distance or area given or any reference made to condition, working order or availability of services or facilities, fixtures or fittings, any guarantee or warranty or statutory or any other permission, approval or reference to suitability for use or occupation, photograph, plan, drawing, aspect or financial or investment information or tenancy and title details or any other information set out in these particulars or otherwise provided shall not be relied on as statements or representations of fact or at all and any prospective buyer or tenant must satisfy themselves by inspection or otherwise as to the accuracy of all information or suitability of the property. (iii) No employee of LSH has any authority to make or give any representation or warranty arising from these particulars or otherwise or enter into any contract whatsoever in relation to the property in respect of any prospective purchase or letting including in respect of any re-sale potential or value or at all. (iv) Price or rent may be subject to VAT and any prospective buyer or tenant must satisfy themselves concerning the correct VAT position. (v) Except in respect of death or personal injury caused by the negligence of LSH or its employees or agents, LSH will not be liable, whether in negligence or otherwise howsoever, for any loss arising from the use of these particulars or any information provided in respect of the property save to the extent that any statement or information has been made or given fraudulently by LSH. (vi) In the case of new development or refurbishment prospective buyers or tenants should not rely on any artists' impressions or architects' drawings or specification or scope of works or amenities, infrastructure or services or information concerning views, character or appearance and timing concerning availability or occupation and prospective buyers or tenants must take legal advice to ensure that any expectations they may have are provided for direct with the seller or landlord and LSH shall have no liability whatsoever concerning any variation or discrepancy in connection with such matters.

